

Home

Download

Buy Now

Products

Resource

Screenshots

Support & FAQ

Home --> Products --> Resource --> Software --> Windows Server partitioning software

Product Editions

- Server Edition
- Unlimited Edition **Hot!**
- Free Lifetime Upgrade Edition
- Editions Comparison

Main Features

- Partition Manager
- Disk & Partition Copy
- Extend Partition Wizard
- 1-click Allocate Free Space

Navigation Links

- Free Download
- Purchase Online
- Top 10 Reasons to Try
- Awards & Reviews
- Customer Stories
- Screenshots
- Support & FAQ
- New Featured Clients

Resource & Tutorial

- How to resize partitions
- How to merge partitions
- How to extend partition
- How to repartition disks
- Fix drive low disk space

Windows Server partitioning software for Windows 2008/2003/2000 32/64 bit.

What does Windows Server partitioning software do?

Generally speaking, you need Windows Server partitioning software to optimize the usage of your Windows server hard disk space. A typical example is that the [system C drive running out of space](#), so you need to merge, resize or extend your Server partitions without losing data to fix this problem.

With the advanced partition manager features of Windows Server partitioning software, you can also maximize your Server's performance, for example, [Create](#), [Format](#), [Delete](#), [Copy](#), [Wipe](#), [Hide](#), [set Active partition](#)

First Server partitioning software for Windows NT and 2000

[Server Magic](#) is the Server edition of [Partition Magic](#) from PowerQuest. It has the ability to check, format, delete, resize and copy volume sets on Windows Server. It works like [Partition Magic](#) and the only difference is that it runs under Server Edition of Windows NT and 2000.

But since being acquired by Symantec, Server Magic has not been upgraded. So it is not possible to extend, resize server partition under any advanced Operating System, such as Windows 2003, 2008, etc.

Best Server partitioning software for Windows 2008/2003/2000

[Partition Assistant Server Edition](#) is a magic ALL-IN-ONE server disk management toolkit for Windows Server 2000, 2003, 2008 and Windows XP, Vista, 7 both 32 and 64 bit.

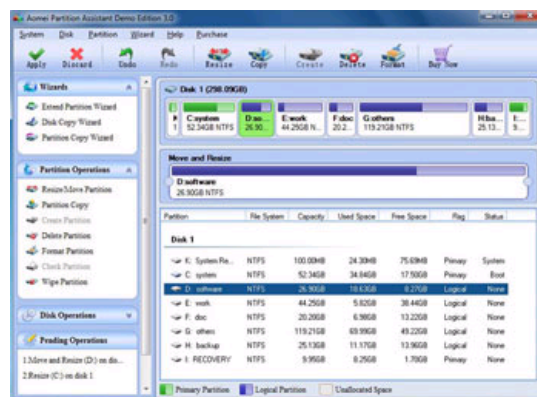
It performs basic and advanced hard disk partition maintenance, for example, [resize](#), [merge](#), shrink, extend system or data partition without losing data, etc. It also provides data protection and disaster recovery. The Server partitioning software functions are brought together: [Partition Manager](#), [Disk & Partition Copy](#) and [Extend Partition Wizard](#).

The unique and most important features of this Windows Server partitioning software:

Enhanced Data Protection technology, with which you can merge, resize partition without data loss even when power off or hardware problem occurs.

With its **Hot Resize** feature, you can extend NTFS system partition without reboot to avoid Server downtime.

Due to its security, stability, easy to use, fully functional and cost-effective, Partition Assistant Server is recommended as the Best Windows Server partitioning software by many professionals and editors.



- ▶ [How to resize partition, extend system partition in Windows 2003 Server?](#)
- ▶ [How to merge Windows 2003 Server partitions?](#)
- ▶ [How to resize Server 2008 partition?](#)
- ▶ [How to allocate free space from any data partition and add to C drive?](#)

Other benefits of Windows Server partitioning software

- ✔ Changes made on partitions can be previewed before applying to the hard disk to avoid incorrect operations.
- ✔ Easy to use, just dragging and drawing on the disk map to resize, merge partitions.
- ✔ Trusted product, many Fortune 500 companies select it to maintain their Servers.
- ✔ 30-day Money Back Guarantee.
- ✔ **Free lifetime** Technical support and after-sale service & Fast Live Support.
- ✔ [full features and benefits...](#)

Awards



Clients Worldwide





Related Articles

- ▶ [How to extend sysem partition in 2003 Server?](#)
- ▶ [How to resize RAID 1 partition on Windows Server?](#)
- ▶ [How to extend RAID 5 partition on Windows Server?](#)
- ▶ [How to resize partition on Server 2003?](#)
- ▶ [Partition Magic for Windows 2008 Server R2](#)

Site Links:

- [Home](#)
- [Products](#)
- [Download](#)
- [Buy Now](#)
- [Resource](#)
- [Screenshot](#)
- [Support](#)
- [Sitemap](#)

Partition Magic Server Resources:

- | | | | | |
|---|---|--|--|---------------------------------|
| Partition Magic Server 2003 | Extend System partition Windows 2003 | Server 2003 extend boot partition | Resize RAID 1 partition | Online Customer |
| Partition Magic Server 2008 | Extend boot partition in Server 2003 | Resize Windows 2003 partitions | Resize RAID 5 partition | |
| Partition Magic Windows 2003 | Extend C drive in Windows 2003 Server | Resize NTFS partition Windows 2003 | Extend RAID 5 partition | Service |
| Partition Magic Windows 2008 | Extend boot partition in Windows 2008 | Server 2003 partition resize | SBS Server low disk space | |
| Partition Magic Windows 2000 | Extend C drive in Windows 2008 Server | Server 2008 partition resize | Change partition size 2003 | |
| Partition Manager Server | Increase partition size in Windows 2003 | Extend C drive in VMware Server | Expand partition Server 2003 | |
| Partition Manager Server 2003 | Increase partition size in Windows 2008 | Repartition Windows 2003 Server | Shrink Extend Server 2008 | |