

Home

Download

Buy Now

Products

Resource

Screenshots

Support & FAQ

Home --> Product --> Resource --> Shrink Partition --> Shrink Extend RAID Array

Product Editions

- Server Edition
- Unlimited Edition **Hot!**
- Free Lifetime Upgrade Edition
- Editions Comparison

Main Features

- Partition Manager
- Disk & Partition Copy
- Extend Partition Wizard
- 1-click Allocate Free Space

Navigation Links

- Free Download
- Purchase Online
- Top 10 Reasons to Try
- Awards & Reviews
- Customer Stories
- Screenshots
- Support & FAQ
- New Featured Clients

Resource & Tutorial

- How to resize partitions
- How to merge partitions
- How to extend partition
- How to repartition disks
- Fix drive low disk space

How to shrink and extend RAID array virtual drives without losing data?

Hardware RAID is common storage media for Windows Server, it has many advantages than physical disk, but the same as physical disk, the partition sizes are allocated while building the Server and RAID array, in most cases, you have to change the partition size, for example:

1. You created a large single RAID virtual drive with Operating System
2. System partition of the RAID array is too small and no free space is left.
3. To manage files more effectively, you need to create more virtual partitions for different usage.
4. A data partition is too small, but you cannot delete it and need to write files into it continuously.

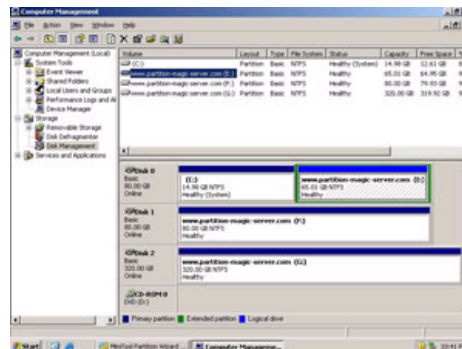
These problems seem to be troublesome, but don't worry, after reading this article, you'll know how easy it is to fix these problems by shrinking and extending RAID virtual partitions.

Tips before shrink and extending RAID array

1. No matter you use RAID 0, RAID 1, RAID 5 or other type, the virtual drive is the same as a physical disk to Operating System.
2. Though you may create many RAID arrays with several hard disks, each RAID array will be displayed as a single physical hard disk under Disk Management.
3. You can only shrink and extend virtual partitions on the same RAID array.
4. Only hardware RAID virtual partitions can be shrunk and extended, dynamic disk should be converted to basic before resizing.

In most cases, the administrators won't create so many RAID arrays. Generally, a RAID 1 array for Operating system, 1 or 2 RAID 5 for data storage, of course, there are several virtual partitions on the RAID array.

Now matter how you create the RAID array and virtual partitions, just check under Windows 2003 or 2008 Server Disk Management.

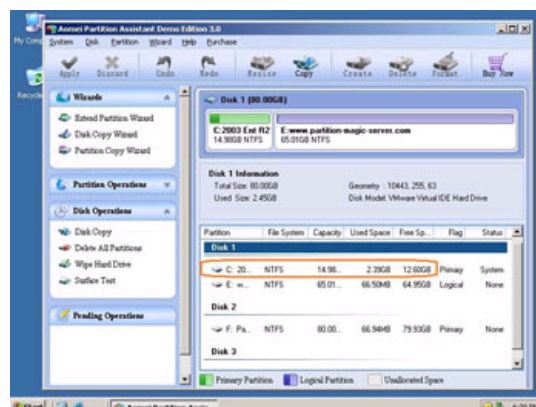


As the picture shows, every Disk is a RAID array, every virtual partition can be shrunk and extended, for example, you may shrink partition E to extend the system C drive.

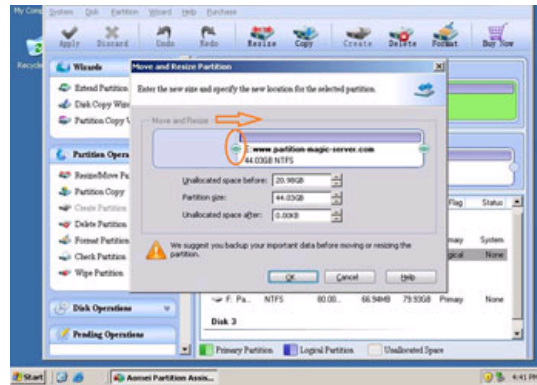
[Partition Assistant Server](#) is a Magic Server partition manager, it supports any hardware RAID array with all controllers.

How to shrink and extend RAID array virtual partitions without deleting or reformatting

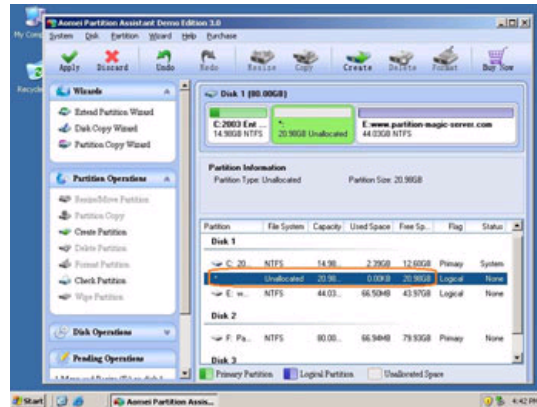
Step 1, Launch [Partition Assistant Server](#), you'll see all disks and partitions that connected to your Server and free space, used space and other properties of each partition.



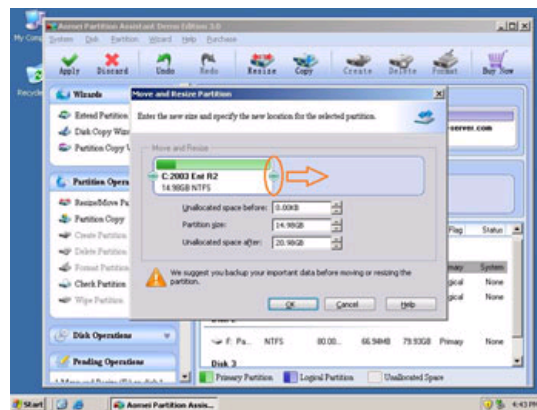
Right-click the data partition and select "Resize", in the pop-up window, drag the left border rightwards to shrink it.



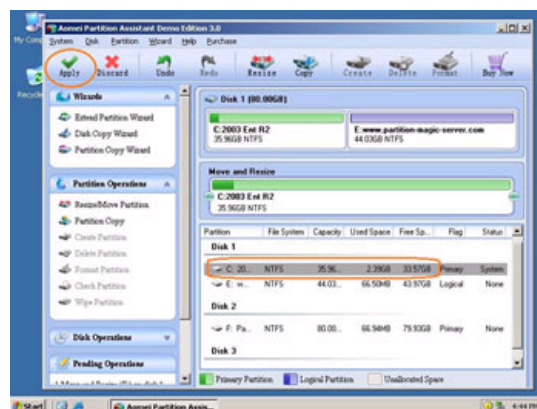
There will be some Unallocated space behind the system partition.



Step 2, Right-click the system partition and select "Resize", in the pop-up window, drag the right border rightwards to hold the Unallocated space.



Click "Apply" to proceed, done.



Now you have a "new" Server that can be used for a long time again.

[How to allocate free space from any data partition and add to C drive without losing data?](#)

For enterprise users, [Unlimited Edition](#) allows unlimited usage within your company to save time and money.

Site Links:

[Home](#)
[Products](#)
[Download](#)
[Buy Now](#)
[Resource](#)
[Screenshot](#)
[Support](#)
[Sitemap](#)

[Partition Magic Server 2003](#)
[Partition Magic Server 2008](#)
[Partition Magic Windows 2003](#)
[Partition Magic Windows 2008](#)
[Partition Magic Windows 2000](#)
[Partition Manager Server](#)

[Extend System partition Windows 2003](#)
[Extend boot partition in Server 2003](#)
[Extend C drive in Windows 2003 Server](#)
[Extend boot partition in Windows 2008](#)
[Extend C drive in Windows 2008 Server](#)
[Increase partition size in Windows 2003](#)

Partition Magic Server Resources:

[Server 2003 extend boot partition](#)
[Resize Windows 2003 partitions](#)
[Resize NTFS partition Windows 2003](#)
[Server 2003 partition resize](#)
[Server 2008 partition resize](#)
[Extend C drive in VMware Server](#)

[Resize RAID 1 partition](#)
[Resize RAID 5 partition](#)
[Extend RAID 5 partition](#)
[SBS Server low disk space](#)
[Change partition size 2003](#)
[Expand partition Server 2003](#)

[Online Customer](#)

[Service](#)

Copyright © 2008-2011 Partition Magic Server ALL RIGHTS RESERVED.

Partition Magic ® is a registered trademark of Symantec Corporation.