

Home

Download

Buy Now

Products

Resource

Screenshots

Support & FAQ

Home --> Products --> Resource --> Partition Magic --> Server Magic

Product Editions

- Server Edition
- Unlimited Edition **Hot!**
- Free Lifetime Upgrade Edition
- Editions Comparison

Main Features

- Partition Manager
- Disk & Partition Copy
- Extend Partition Wizard
- 1-click Allocate Free Space

Navigation Links

- Free Download
- Purchase Online
- Top 10 Reasons to Try
- Awards & Reviews
- Customer Stories
- Screenshots
- Support & FAQ
- New Featured Clients

Resource & Tutorial

- How to resize partitions
- How to merge partitions
- How to extend partition
- How to repartition disks
- Fix drive low disk space

Server Magic for Windows Server 2008/2003/2000 32 and 64 bit.

Looking for **Server Magic** or [Partition Magic Server Edition](#) working on Windows Server 2008/2003/2000? In this article I'll answer this question.

What is Server Magic?

Server Magic is the Server edition of [Partition Magic](#) from PowerQuest. It has the ability to check, format, delete, resize and copy volume sets on Windows Server. Server Magic works like [Partition Magic](#) and the only difference from Partition Magic is that it runs under Server Edition of Windows NT and 2000.

But since being acquired by Symantec, Server Magic has not been upgraded. So it is not possible for Server Magic to extend, resize server partition under any advanced Operating System, such as Windows 2003, 2008, etc.

Server Magic Alternative

Since **Server Magic** is not available for Windows Server 2003, 2008, then how to choose right software to resize or extend your Server partitions without losing data? Luckily, there are Server Magic alternatives for Windows Server 2008, 2003.

As Server Magic alternative, [Partition Assistant Server Edition](#) is a magic ALL-IN-ONE server disk management for Windows Server 2000, 2003, 2008 and Windows XP, Vista, Windows 7.

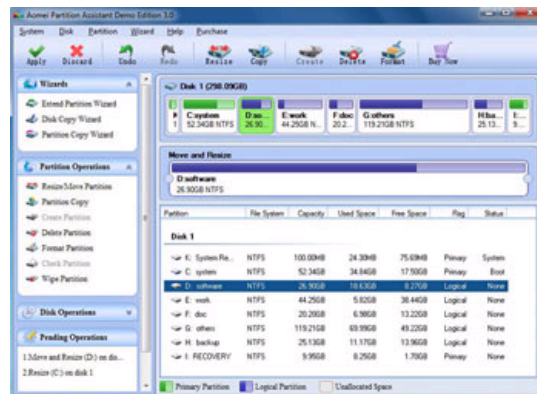
It performs basic and advanced hard disk partition maintenance, for example, [resize](#), [merge](#), shrink, extend system and data partition without losing data, etc. It also provides data protection and disaster recovery. The flawless hard disk management functions are brought together: [Partition Manager](#), [Disk & Partition Copy](#) and [Extend Partition Wizard](#).

Unique and most important features of this Server Magic Alternative:

Enhanced Data Protection technology, with which you can merge, resize partition without data loss even when power off or hardware problem occurs.

With its **Hot Resize** feature, you can extend NTFS system partition without reboot to avoid Server downtime.

Due to its security, stability, easy to use, fully functional and cost-effective, Partition Assistant Server is recommended as the **Best Server Magic alternative** by many professionals and editors.

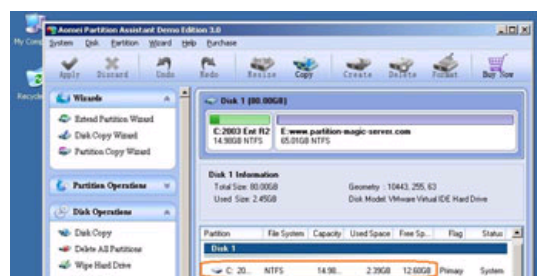


Based on the unique Enhanced data protection technology, easy to use and other benefits, [Partition Assistant Server Edition](#) is highly recommended as the best Partition Magic alternative for Win 2003, 2008 Server.

With this Partition Magic for Wino 2003, 2008, you can [resize partition](#), [merge partitions](#), [extend system partition](#) without deleting or formatting. [Hide](#), [Create](#), [Format](#), [Convert](#), [Set Active](#), etc.

How to repartition Windows Server without data loss by this Server Magic alternative

Step 1, Launch [Partition Magic Server](#), you'll see all disks and partitions that connected to your Server and free space, used space and other properties of each partition.

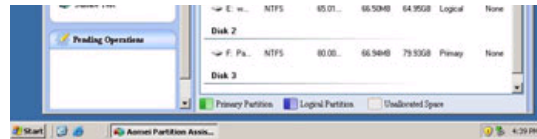


Awards

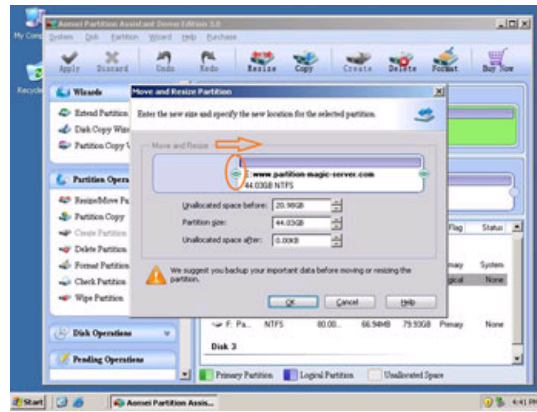


Clients Worldwide

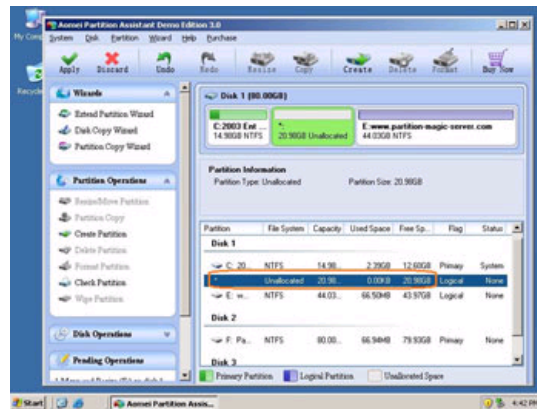




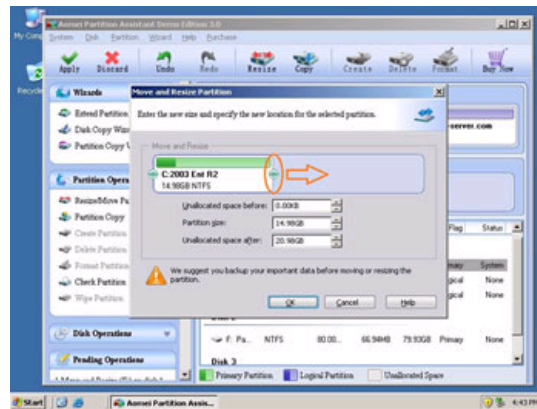
Right-click the data partition and select "Resize", in the pop-up window, drag the left border rightwards to shrink it.



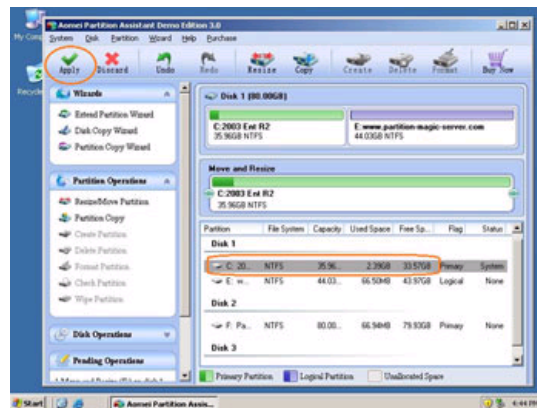
There will be some Unallocated space behind the system partition.



Step 2, Right-click the system partition and select "Resize", in the pop-up window, drag the right border rightwards to hold the Unallocated space.



Click "Apply" to proceed, done.



Now you have a "new" Server that can be used for a long time again.

[How to allocate free space from any data partition and add to C drive?](#)

[Download this Server magic](#) freely and check how it works.

For enterprise users, [Unlimited Edition](#) allows unlimited usage within your company to save time and money.

Site Links:	
Home	Resource
Products	Screenshot
Download	Support
Buy Now	Sitemap

Partition Magic Server Resources:			
Partition Magic Server 2003	Extend System partition Windows 2003	Server 2003 extend boot partition	Resize RAID 1 partition
Partition Magic Server 2008	Extend boot partition in Server 2003	Resize Windows 2003 partitions	Resize RAID 5 partition
Partition Magic Windows 2003	Extend C drive in Windows 2003 Server	Resize NTFS partition Windows 2003	Extend RAID 5 partition
Partition Magic Windows 2008	Extend boot partition in Windows 2008	Server 2003 partition resize	SBS Server low disk space
Partition Magic Windows 2000	Extend C drive in Windows 2008 Server	Server 2008 partition resize	Change partition size 2003
Partition Manager Server	Increase partition size in Windows 2003	Extend C drive in VMware Server	Expand partition Server 2003
Partition Manager Server 2003	Increase partition size in Windows 2008	Repartition Windows 2003 Server	Shrink Extend Server 2008
			Online Customer Service

Copyright © 2008-2011 Partition Magic Server ALL RIGHTS RESERVED.
Partition Magic ® is a registered trademark of Symantec Corporation.