

Home

Download

Buy Now

Products

Resource

Screenshots

Support & FAQ

Home --> Products --> Resource --> **Resize Partition** --> Resize Windows Server Partition

### Product Editions

- Server Edition
- Unlimited Edition **Hot!**
- Free Lifetime Upgrade Edition
- Editions Comparison

### Main Features

- Partition Manager
- Disk & Partition Copy
- Extend Partition Wizard
- 1-click Allocate Free Space

### Navigation Links

- Free Download
- Purchase Online
- Top 10 Reasons to Try
- Awards & Reviews
- Customer Stories
- Screenshots
- Support & FAQ
- New Featured Clients

### Resource & Tutorial

- How to resize partitions
- How to merge partitions
- How to extend partition
- How to repartition disks
- Fix drive low disk space

Awards



Clients Worldwide



## How to resize Windows Server partition without data loss, fast and safely?

### Resize Windows Server partition

Today's hard drives feature jaw-dropping amounts of space, but no matter how big your drive is, you'll be amazed at how quickly Windows updates, application installs, browser caches, and temporary files can eat up your free space and clutter your system.

When the [system C: drive is out of space](#), Windows pops up an [low disk space alert](#) and the Server runs much slowly immediately. System maybe crash if there is little free space. What will you do in this situation, start over? No.

The most time-saving and easiest way is **resizing Windows Server partition** with reliable [Server partition software](#). That is to say, shrink other data partition to release some free space and then [add the disk space to system C drive](#).



No need to delete, reformat partition or rebuild the Servers, save time and easy to go.

### Then how to resize Windows Server partition without losing data?

### Resize Windows Server partition with Partition Magic Server

To many Server administrators, to resize Windows Server partition is not an easy task. Some unreliable software might destroy all your valued data during the process of resizing Windows Server partitions. Now, there is a fantastic and award-winning [Partition Magic Server](#) software to resize Windows Server partition without losing data.

[Partition Magic Server](#) is an ALL-IN-ONE server disk management toolkit for Windows Server 2008/2003/2000, Small Business Server 2011/2008/2003 and Windows XP, Vista, 7 (32 and 64 bit).

This flawless hard disk management functions are brought together: [Partition Manager](#), [Disk & Partition Copy](#) and [Extend Partition Wizard](#). It allows user to Resize, Merge, Split, Extend system and data partition. Create, Delete, Format, Copy, Repair partition, etc.

### Pay attention to resize Windows Server partitions

The data security is the most important for Windows Server, no one wants to see data loss or boot failure after resizing partitions.

Based on the unique enhanced data protection technology and [Copy Wizard](#) built in [Partition Assistant Server](#), you don't need to worry about the data safety when resizing Windows Server partition. This [Server partition manager](#) is highly recommended by many professionals and editors, besides, many Fortune 500, universities, governments select it to manage their Servers. ([Our featured clients](#))

### How to resize Windows Server partition?

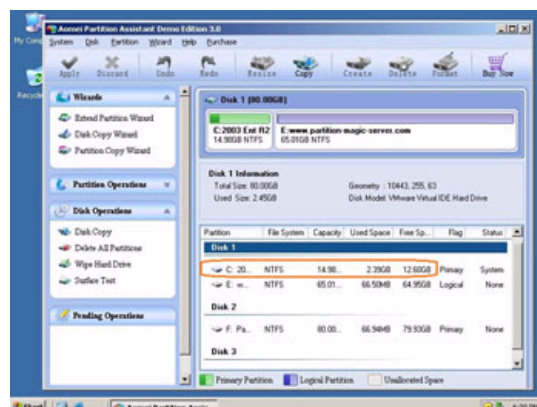
It is extremely easy to resize Windows Server partitions. With the absolutely user-friendly interface, the functions are easy to get access to, you just need to drag and move on the disk map to resize partitions.

- Any operations you do on the Server will be listed in the "Operations Pending" for you to preview.

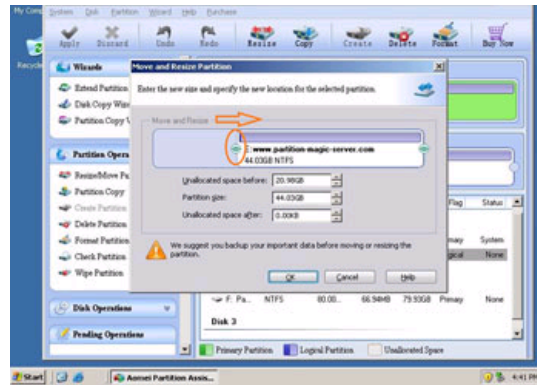
- You can extend the Server system partition under Windows (without restarting) if it is NTFS.

### Steps to resize Windows Server partition without deleting or formatting

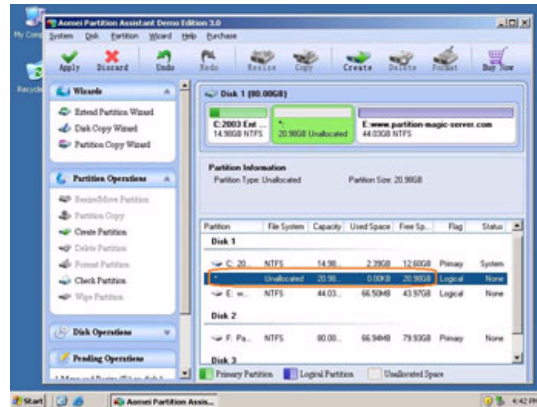
Step 1, Launch [Partition Assistant Server](#), you'll see all disks and partitions that connected to your Server and free space, used space and other properties of each partition.



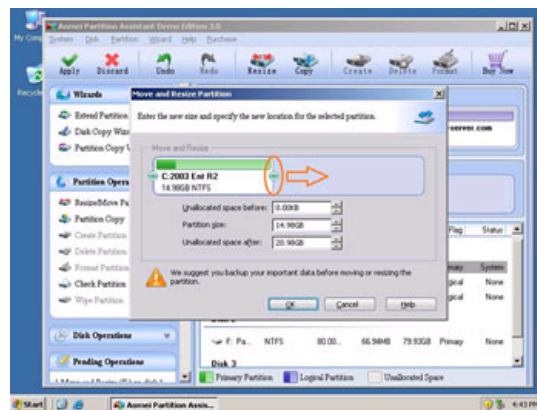
Right-click the data partition and select "Resize", in the pop-up window, drag the left border rightwards to shrink it.



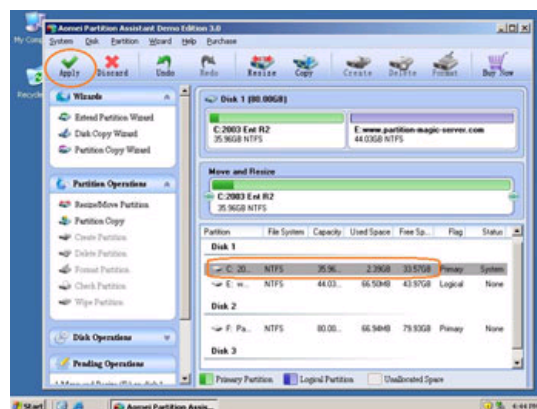
There will be some Unallocated space behind the system partition.



Step 2, Right-click the system partition and select "Resize", in the pop-up window, drag the right border rightwards to hold the Unallocated space.



Click "Apply" to proceed, done.



Now you have a "new" Server that can be used for a long time again.

[How to allocate free space from any data partition and add to C drive without losing data?](#)

For enterprise users, [Unlimited Edition](#) allows unlimited usage within your company to save time and money.

### Benefits to resize Windows Server partition with this Partition Magic Server

- ✔ All-in-one Partition Solution - All your partition and disk maintenance requirements can be fulfilled.
- ✔ Enhanced Data Protecting - No Data Loss
- ✔ Hot Resize - Extend NTFS system partition without rebooting
- ✔ Easy to use & user-friendly interface
- ✔ Trustworthy, many Fortune 500 companies select it to maintain their Servers.
- ✔ [Read more...](#)

Related Articles

- ▶ [Partition Magic for Windows 2008 Server R2](#)
- ▶ [Partition Magic Windows 2003 Server](#)
- ▶ [How to extend boot partition in Windows 2003?](#)
- ▶ [How to resize Server 2003 partitions?](#)
- ▶ [How to resize RAID 1 partitions?](#)
- ▶ [How to resize RAID 5 partitions?](#)

Site Links:

<a href="#">Home</a>	<a href="#">Resource</a>
<a href="#">Products</a>	<a href="#">Screenshot</a>
<a href="#">Download</a>	<a href="#">Support</a>
<a href="#">Buy Now</a>	<a href="#">Sitemap</a>

Partition Magic Server Resources:

<a href="#">Partition Magic Server 2003</a>	<a href="#">Extend System partition Windows 2003</a>	<a href="#">Server 2003 extend boot partition</a>	<a href="#">Resize RAID 1 partition</a>	<a href="#">Online Customer Service</a>
<a href="#">Partition Magic Server 2008</a>	<a href="#">Extend boot partition in Server 2003</a>	<a href="#">Resize Windows 2003 partitions</a>	<a href="#">Resize RAID 5 partition</a>	
<a href="#">Partition Magic Windows 2003</a>	<a href="#">Extend C drive in Windows 2003 Server</a>	<a href="#">Resize NTFS partition Windows 2003</a>	<a href="#">Extend RAID 5 partition</a>	<a href="#">Service</a>
<a href="#">Partition Magic Windows 2008</a>	<a href="#">Extend boot partition in Windows 2008</a>	<a href="#">Server 2003 partition resize</a>	<a href="#">SBS Server low disk space</a>	
<a href="#">Partition Magic Windows 2000</a>	<a href="#">Extend C drive in Windows 2008 Server</a>	<a href="#">Server 2008 partition resize</a>	<a href="#">Change partition size 2003</a>	
<a href="#">Partition Manager Server</a>	<a href="#">Increase partition size in Windows 2003</a>	<a href="#">Extend C drive in VMware Server</a>	<a href="#">Expand partition Server 2003</a>	
<a href="#">Partition Manager Server 2003</a>	<a href="#">Increase partition size in Windows 2008</a>	<a href="#">Repartition Windows 2003 Server</a>	<a href="#">Shrink Extend Server 2008</a>	

Copyright © 2008-2011 Partition Magic Server ALL RIGHTS RESERVED.  
Partition Magic ® is a registered trademark of Symantec Corporation.