

Home

Download

Buy Now

Products

Resource

Screenshots

Support & FAQ

Home --> Products --> Resource --> Disk Space --> Increase C Drive Space

### Product Editions

- Server Edition
- Unlimited Edition **Hot!**
- Free Lifetime Upgrade Edition
- Editions Comparison

### Main Features

- Partition Manager
- Disk & Partition Copy
- Extend Partition Wizard
- 1-click Allocate Free Space

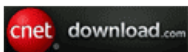
### Navigation Links

- Free Download
- Purchase Online
- Top 10 Reasons to Try
- Awards & Reviews
- Customer Stories
- Screenshots
- Support & FAQ
- New Featured Clients

### Resource & Tutorial

- How to resize partitions
- How to merge partitions
- How to extend partition
- How to repartition disks
- Fix drive low disk space

Awards



Clients Worldwide



## How to increase C drive space on Windows Server 2008/2003/2000 without losing data?

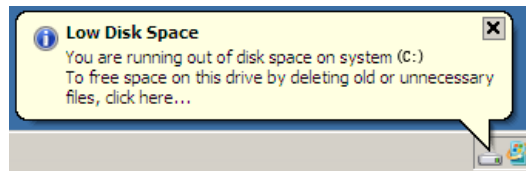
All the size of the hard disk partitions are carefully allocated while building the Windows 2008 or 2003 Server, however, things are changing and the scheduled size may not always meet your needs, especially for the System partition, as Windows continues to download large updates, application, browser caches, restore points and temporary files can also eat up your free space quickly.

When there is no enough free space left in C drive, Windows pops up an alert of Low Disk Space.

### Windows 2003 Server low disk space



### Windows 2008 Server low disk space



When Windows pop up this alert, you should fix this low disk space problem as fast as possible, as you cannot install Windows updates and other applications, system runs much slower, the worst is system crash if extremely low free space is left.

## Increase C drive space on Windows Server 2008/2003/2000

To solve this problem, the first thought of many people is trying to free up disk space of C drive, but after several hours, you'll find that little free space was free up and shortly this low disk space warning pops up again. The most time-saving and easiest way is increasing C drive space. That is to say, shrink other data partition and increase C drive space without deleting partition.

After reading this article, you'll know how easy it is to increasing C drive space without losing data.

## Ensure data security when changing partition size

Though it is possible to increase C drive space without deleting partitions, you should select a reliable partition software, as the data security is most important for Windows Server, no one wants to see boot failure or data loss after resizing partitions.

Based on the built-in enhanced data protection technology, [Partition Magic Server](#) is not only reliable itself, but also integrated with the [Disk & Partition Copy Wizard](#) to ensure 100% data security. It is highly recommended by many professionals and editors, besides, many Fortune 500 companies, Governments, Universities select it to maintain their Servers.

## How to increase C drive on Windows Server 2008/2003/2000

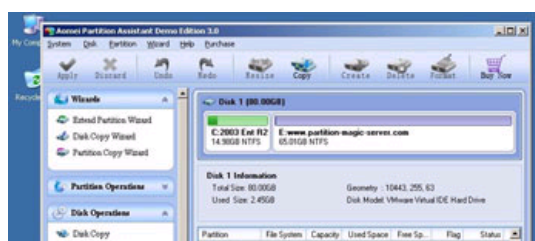
It is very easy to increase C drive space on physical hard disk or VMware/RAID virtual drives. Just shrink an existing data partition to get some free (Unallocated) space, and then you can easily increase C drive space, no deed to delete or reformat.

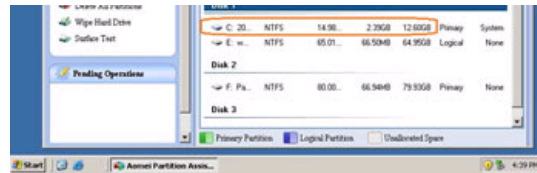
If the system C drive is NTFS, you can increase its partition size without rebooting.

All operations you do on the Server will be listed on the "Operation Pending" column for you to preview before applying to disk.

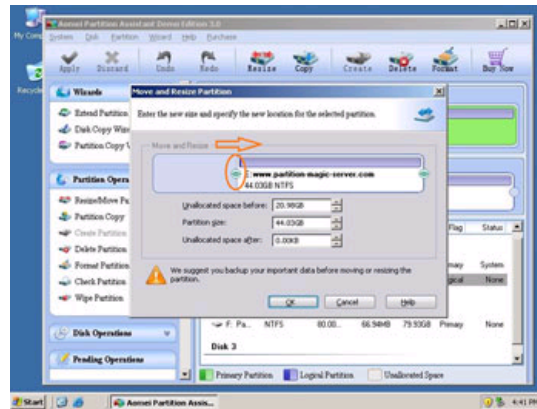
## Steps to resize partition and increase C drive space

Step 1, Launch [Partition Magic Server](#), you'll see all disks and partitions that connected to your Server and free space, used space and other properties of each partition.

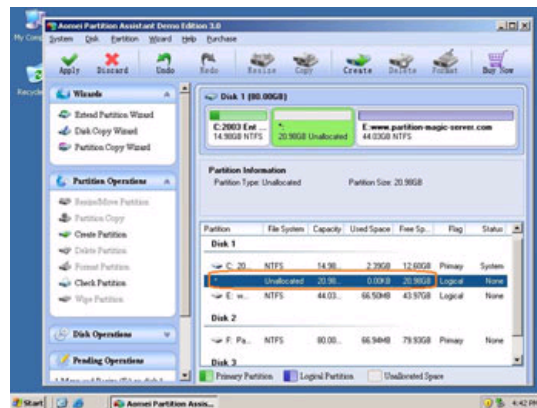




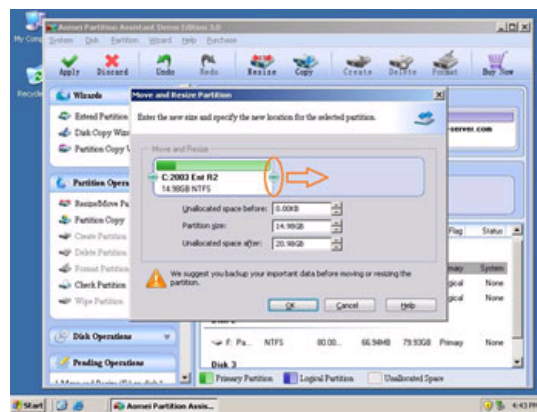
Right-click the data partition and select "Resize", in the pop-up window, drag the left border rightwards to shrink it.



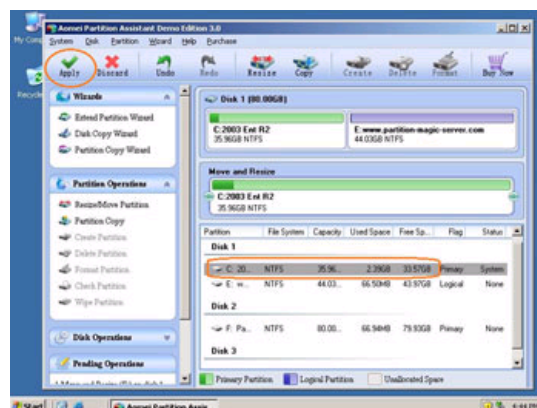
There will be some Unallocated space behind the system partition.



Step 2, Right-click the system partition and select "Resize", in the pop-up window, drag the right border rightwards to hold the Unallocated space.



Click "Apply" to proceed, done.



Now you have a "new" Server that can be used for a long time again.

[How to allocate free space from any data partition and add to C drive?](#)

For enterprise users, [Unlimited Edition](#) allows unlimited usage within your company to save time and money.

## Benefits to resize partition with this Partition Magic Server

- ✔ All-in-one Partition Solution - All your partition and disk maintenance requirements can be fulfilled.
- ✔ Enhanced Data Protecting - No Data Loss
- ✔ Hot Resize - Extend NTFS system partition without rebooting
- ✔ Easy to use & user-friendly interface & working fast
- ✔ Trustworthy, many Fortune 500 companies select it to maintain their Servers
- ✔ [Read More...](#)

### Site Links:

<a href="#">Home</a>	<a href="#">Resource</a>
<a href="#">Products</a>	<a href="#">Screenshot</a>
<a href="#">Download</a>	<a href="#">Support</a>
<a href="#">Buy Now</a>	<a href="#">Sitemap</a>

### Partition Magic Server Resources:

<a href="#">Partition Magic Server 2003</a>	<a href="#">Extend System partition Windows 2003</a>	<a href="#">Server 2003 extend boot partition</a>	<a href="#">Resize RAID 1 partition</a>	<a href="#">Online Customer</a>
<a href="#">Partition Magic Server 2008</a>	<a href="#">Extend boot partition in Server 2003</a>	<a href="#">Resize Windows 2003 partitions</a>	<a href="#">Resize RAID 5 partition</a>	
<a href="#">Partition Magic Windows 2003</a>	<a href="#">Extend C drive in Windows 2003 Server</a>	<a href="#">Resize NTFS partition Windows 2003</a>	<a href="#">Extend RAID 5 partition</a>	<a href="#">Service</a>
<a href="#">Partition Magic Windows 2008</a>	<a href="#">Extend boot partition in Windows 2008</a>	<a href="#">Server 2003 partition resize</a>	<a href="#">SBS Server low disk space</a>	
<a href="#">Partition Magic Windows 2000</a>	<a href="#">Extend C drive in Windows 2008 Server</a>	<a href="#">Server 2008 partition resize</a>	<a href="#">Change partition size 2003</a>	
<a href="#">Partition Manager Server</a>	<a href="#">Increase partition size in Windows 2003</a>	<a href="#">Extend C drive in VMware Server</a>	<a href="#">Expand partition Server 2003</a>	
<a href="#">Partition Manager Server 2003</a>	<a href="#">Increase partition size in Windows 2008</a>	<a href="#">Repartition Windows 2003 Server</a>	<a href="#">Shrink Extend Server 2008</a>	

Copyright © 2008-2011 Partition Magic Server ALL RIGHTS RESERVED.  
Partition Magic ® is a registered trademark of Symantec Corporation.