

Home

Download

Buy Now

Products

Resource

Screenshots

Support & FAQ

Home --> Products --> Resource --> How to Resize Windows Server Partition

Product Editions

- Server Edition
- Unlimited Edition **Hot!**
- Free Lifetime Upgrade Edition
- Editions Comparison

Main Features

- Partition Manager
- Disk & Partition Copy
- Extend Partition Wizard
- 1-click Allocate Free Space

Navigation Links

- Free Download
- Purchase Online
- Top 10 Reasons to Try
- Awards & Reviews
- Customer Stories
- Screenshots
- Support & FAQ
- New Featured Clients

Resource & Tutorial

- How to resize partitions
- How to merge partitions
- How to extend partition
- How to repartition disks
- Fix drive low disk space

How to resize Windows Server partition with Partition Magic Server?

Why resize Windows Server partition?

When the boot partition **C: drive is out of space**, the Server computer will be fighting for the precious space and will run slowly. To start over is a solution but no one would like to waste their happy weekend to do it. The most time-saving and easy way is to resize Windows Server with reliable [Server partition software](#).

Ensure data security when resizing Windows Server partition

The security and stability are undoubtedly the most significant aspects for Server computers since a Server computer usually stores the most important classified and daily-used files. However, even a slight error on server computer might directly leads to exposure of the whole network to the outside.

Network administrators need to take good care of these Server computers. That's why the software installed on Server computers is strictly chosen by administrator, especially the computer utilities, which are able to maximize the performance of the Servers.

Based on the enhanced data protection technology and copy wizard built in [Partition Assistant Server Edition](#), it is highly recommended with its excellent advantages while resizing Windows 2003 server as the "[Magic Server Partition Manager](#)". The reason is that it is able to extend NTFS system partition without reboot to maximize the server performance and minimize the downtime of the server.

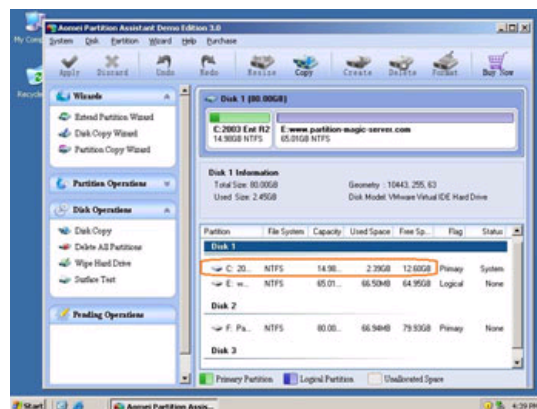
How to resize Windows Server partition?

It is extremely easy to resize Windows Server partition. With the absolutely user-friendly interface, the functions of Partition Assistant Server are easy to get access to, no matter whether you've got experience in using Partition Magic or not.

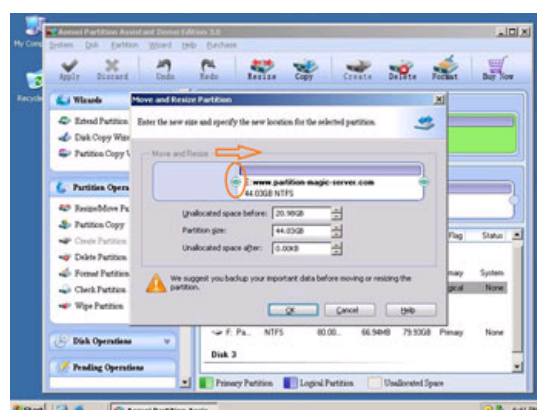
Any operations you do on the Server will be listed in the "Operations Pending" column, making sure no changes take place on your partitions before you click "Apply". So if you are not sure about your operation, just close this partition software and nothing will be changed.

How to resize Windows Server partition fast and easily?

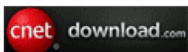
Step 1, Launch [Partition Magic Server](#), you'll see all disks and partitions that connected to your Server and free space, used space and other properties of each partition.



Right-click the data partition and select "Resize", in the pop-up window, drag the left border rightwards to shrink it.



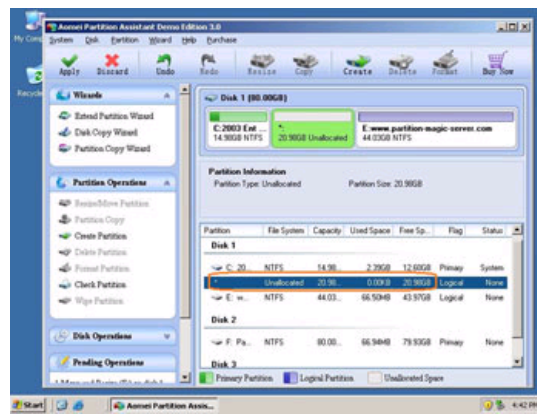
Awards



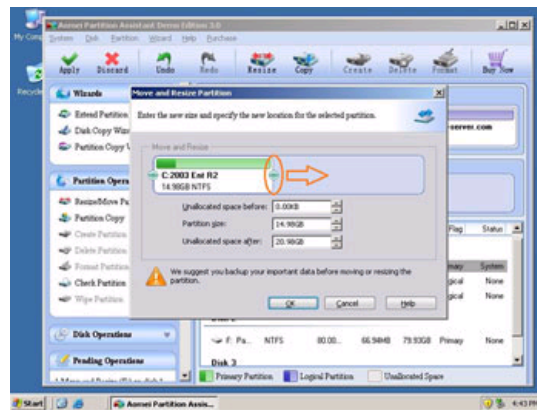
Clients Worldwide



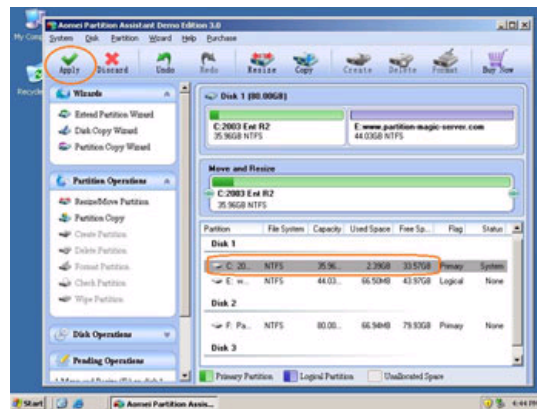
There will be some Unallocated space behind the system partition.



Step 2, Right-click the system partition and select "Resize", in the pop-up window, drag the right border rightwards to hold the Unallocated space.



Click "Apply" to proceed, done.



Now you have a "new" Server that can be used for a long time again.

[How to allocate free space from any data partition and add to C drive?](#)

Benefits of Partition Wizard to resize Windows Server partition

Among the Server partition software, Partition Assistant Server is recommended as the best one in many technical forums, the reason includes,

- ✔ Enhanced data protection technology helps you resize, merge partition without data loss, even when power off or hardware problem occurred.
- ✔ Hot Resize feature helps you extend NTFS partition without reboot to suspend Server running.
- ✔ Disk and partition copy feature helps you backup data or migrate to another disk without reinstalling Windows.
- ✔ Changes made on partitions can be previewed before applying to the hard disk.
- ✔ With user-friendly interface, no professional assistance or experience in using Partition Magic is required.

For enterprise users, [Unlimited Edition](#) allows unlimited usage within your company to save time and money.

Related Articles

- ▶ [How to resize partition on Windows Server without data loss?](#)
- ▶ [Partition Magic 2003 for Windows 2003 Server?](#)
- ▶ [How to resize 2003 Server boot \(system\) partition?](#)
- ▶ [How to resize RAID 5 partition with partition magic server software?](#)
- ▶ [Best Partition Magic Windows Server software.](#)

Site Links:

Home	Resource
Products	Screenshot
Download	Support
Buy Now	Sitemap

Partition Magic Server 2003
Partition Magic Server 2008
Partition Magic Windows 2003
Partition Magic Windows 2008
Partition Magic Windows 2000
Partition Manager Server
Partition Manager Server 2003

Extend System partition Windows 2003
Extend boot partition in Server 2003
Extend C drive in Windows 2003 Server
Extend boot partition in Windows 2008
Extend C drive in Windows 2008 Server
Increase partition size in Windows 2003
Increase partition size in Windows 2008

Partition Magic Server Resources:

Server 2003 extend boot partition
Resize Windows 2003 partitions
Resize NTFS partition Windows 2003
Server 2003 partition resize
Server 2008 partition resize
Extend C drive in VMware Server
Repartition Windows 2003 Server

Resize RAID 1 partition
Resize RAID 5 partition
Extend RAID 5 partition
SBS Server low disk space
Change partition size 2003
Expand partition Server 2003
Shrink Extend Server 2008

[Online Customer](#)

[Service](#)