

Home

Download

Buy Now

Products

Resource

Screenshots

Support & FAQ

Home --> Products --> Resource --> Extend Partition --> Extend RAID 5 Partition

### Product Editions

- Server Edition
- Unlimited Edition **Hot!**
- Free Lifetime Upgrade Edition
- Editions Comparison

### Main Features

- Partition Manager
- Disk & Partition Copy
- Extend Partition Wizard
- 1-click Allocate Free Space

### Navigation Links

- Free Download
- Purchase Online
- Top 10 Reasons to Try
- Awards & Reviews
- Customer Stories
- Screenshots
- Support & FAQ
- New Featured Clients

### Resource & Tutorial

- How to resize partitions
- How to merge partitions
- How to extend partition
- How to repartition disks
- Fix drive low disk space

### How to extend RAID 5 partition on Windows Server safely and easily?

All the size of virtual partitions on RAID 5 array is carefully allocated while building the Server and RAID. However, things are changing and the scheduled size may not always meet your needs, especially for the System partition, as Windows continues to download large updates or any other reasons.

If the System partition is running out of space and struggles for precious unallocated space, you are unable to install new programs, even the whole performance of your computer will be declined, say, the computer goes much slowly.

Fortunately, no matter you want to extend RAID 5 system or data partition, nowadays you can extend RAID 5 virtual partitions without deleting, formatting partitions or rebuilding the Server. You just need to shrink a virtual data partition to extend the system drive or another partition.

### Notes to extend RAID 5 partition

1. To Operating System, the RAID 5 virtual drive is the same as a physical hard disk after you building the RAID array. Don't break the RAID array, just operate like resizing partition on physical hard disk.
2. Only hardware RAID 5 partition can be extended, if you use dynamic RAID 5 volume, you need to convert it to basic before resizing.
3. If there is no free space on all of the virtual partitions on the RAID 5, you have to add another disk to this RAID 5 array. After that the new disk space will be displayed as Unallocated at the end of the virtual disk, and then you can resize partitions with [Partition Magic Server](#) software.

Make sure the RAID controller has the ability to re-configure RAID 5 without data losing.

### How to extend RAID 5 partition?

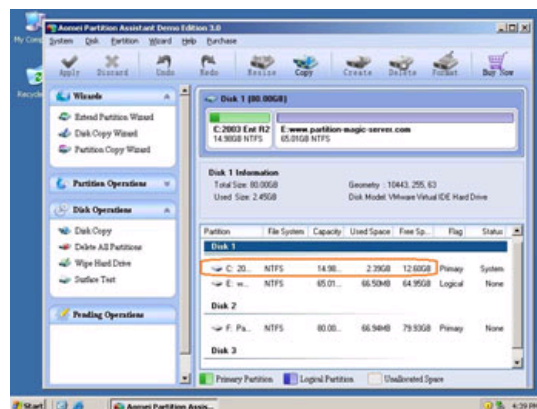
Two choices - by merging system partition and a data partition, or shrinking a data partition to extend another partition.

As by merging partitions, you'll loss an existing partition (though the files will be transferred to another partition when merging), I do not suggest extend system partition by merging, but if you insist on doing this, please refer [how to merge Windows Server 2003 partitions](#).

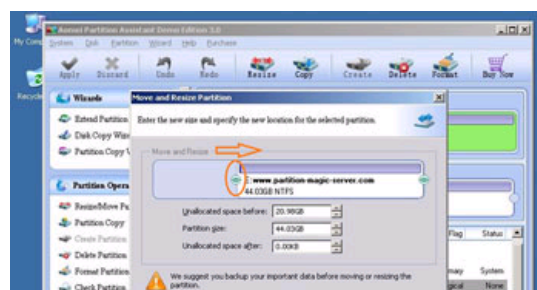
It is also extremely easy to extend system partition by resizing. You just need to drag and move on the disk map to shrink an existing data partition and get some Unallocated space to extend the system C drive, there is no need to delete, format partition or rebuild the Server.

### Steps to extend RAID 5 system virtual partition:

Step 1, Launch [Partition Magic Server](#), you'll see all disks and partitions that connected to your Server and free space, used space and other properties of each partition.



Right-click the data partition and select "Resize", in the pop-up window, drag the left border rightwards to shrink it.

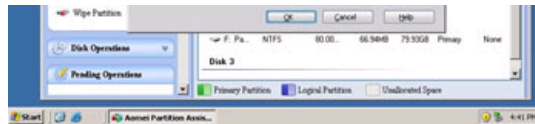


Awards

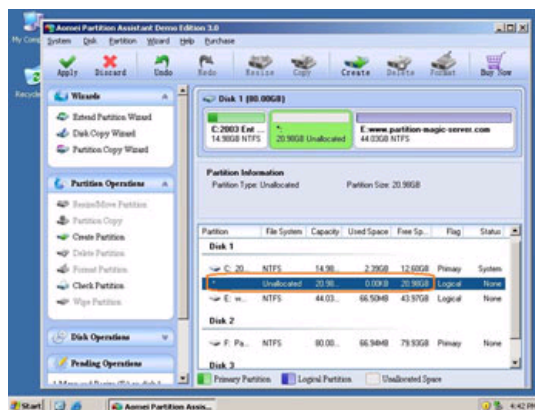


Clients Worldwide

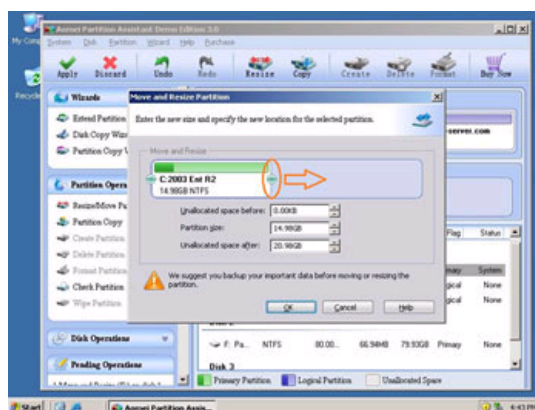




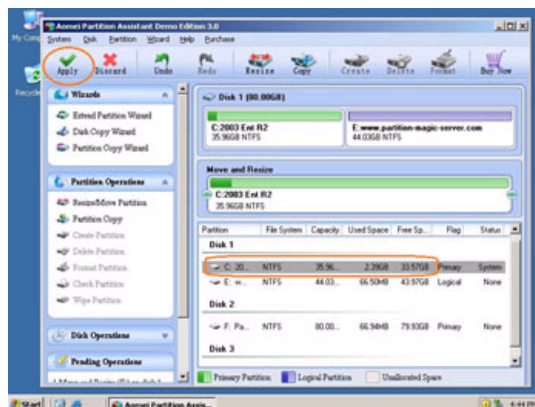
There will be some Unallocated space behind the system partition.



Step 2, Right-click the system partition and select "Resize", in the pop-up window, drag the right border rightwards to hold the Unallocated space.



Click "Apply" to proceed, done.



Now you have a "new" Server that can be used for a long time again.

How to allocate free space from any data partition and add to C drive?

For enterprise users, [Unlimited Edition](#) allows unlimited usage within your company to save time and money.

#### Related Articles

- ▶ [Partition Magic Server for Windows 2003](#)
- ▶ [Partition Magic Server for Windows 2008](#)
- ▶ [How to extend boot partition in Windows 2003?](#)
- ▶ [How to extend C drive in Windows 2008?](#)
- ▶ [How to resize partition in Windows 2008 Server?](#)

#### Site Links:

[Home](#)  
[Products](#)  
[Download](#)  
[Buy Now](#)  
[Resource](#)  
[Screenshot](#)  
[Support](#)  
[Sitemap](#)

[Partition Magic Server 2003](#)  
[Partition Magic Server 2008](#)  
[Partition Magic Windows 2003](#)  
[Partition Magic Windows 2008](#)  
[Partition Magic Windows 2000](#)  
[Partition Manager Server](#)  
[Partition Manager Server 2003](#)

[Extend System partition Windows 2003](#)  
[Extend boot partition in Server 2003](#)  
[Extend C drive in Windows 2003 Server](#)  
[Extend boot partition in Windows 2008](#)  
[Extend C drive in Windows 2008 Server](#)  
[Increase partition size in Windows 2003](#)  
[Increase partition size in Windows 2008](#)

#### Partition Magic Server Resources:

[Server 2003 extend boot partition](#)  
[Resize Windows 2003 partitions](#)  
[Resize NTFS partition Windows 2003](#)  
[Server 2003 partition resize](#)  
[Server 2008 partition resize](#)  
[Extend C drive in VMware Server](#)  
[Repartition Windows 2003 Server](#)

[Resize RAID 1 partition](#)  
[Resize RAID 5 partition](#)  
[Extend RAID 5 partition](#)  
[SBS Server low disk space](#)  
[Change partition size 2003](#)  
[Expand partition Server 2003](#)  
[Shrink Extend Server 2008](#)

[Online Customer](#)

[Service](#)

