

Home

Download

Buy Now

Products

Resource

Screenshots

Support & FAQ

Home --> Products --> Resource --> Extend C Drive VMware Server

### Product Editions

- Server Edition
- Unlimited Edition **Hot!**
- Free Lifetime Upgrade Edition
- Editions Comparison

### Main Features

- Partition Manager
- Disk & Partition Copy
- Extend Partition Wizard
- 1-click Allocate Free Space

### Navigation Links

- Free Download
- Purchase Online
- Top 10 Reasons to Try
- Awards & Reviews
- Customer Stories
- Screenshots
- Support & FAQ
- New Featured Clients

### Resource & Tutorial

- How to resize partitions
- How to merge partitions
- How to extend partition
- How to repartition disks
- Fix drive low disk space

## How to expand/resize/extend C drive on VMware Server

### Resize/extend C drive VMware Server

VMware is the most popular Virtual Machine software for now. It is easy to use and works like a physical computer. The most common problem of VMware is related to disk partition space. For example, after a period of time, you may find the system [C drive running out space](#), so you have to [resize/extend C drive](#) VMware Server. To most of the people, it is extremely hard to extend C drive on VMware Server.

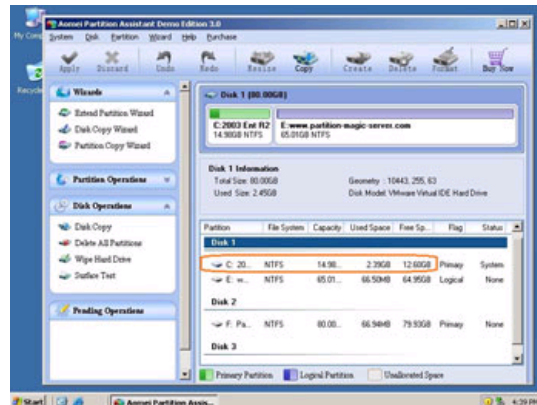
### Common VMware Server disk partition space problem

1. System [C drive runs out of space](#) on the virtual disk and you need to expand it.
2. The VMware virtual disk is too small when you create it, now you need to extend the entire virtual disk.
3. Both the entire virtual disk and the system partition is too small, so you cannot extend C: drive by shrink other virtual data partitions.

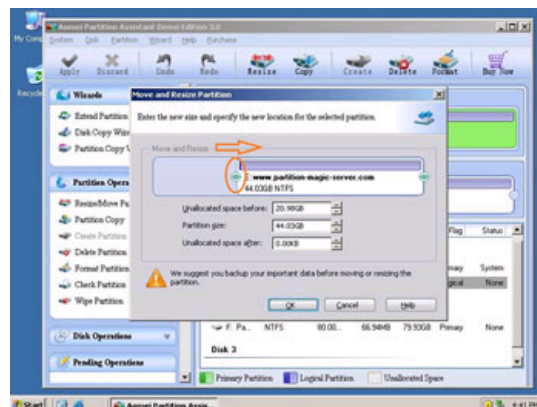
No matter you use VMware workstation or VMware Server, to solve the problems above, you just need one tool - Partition Assistant Server. It is extremely easy to use, just drag and move on the disk map to resize and extend partitions. After several minutes, you'll have a "new" virtual Server without other operations.

### How to extend C drive of Windows Server on VMware Workstation or Server?

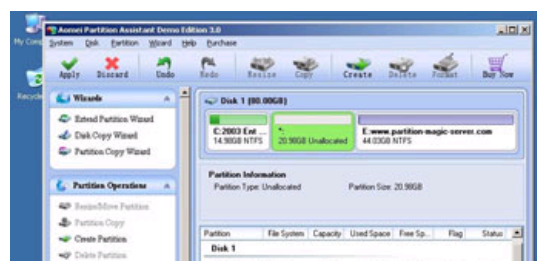
Step 1, Launch [Partition Magic Server](#), you'll see all disks and partitions that connected to your Server and free space, used space and other properties of each partition.



Right-click the data partition and select "Resize", in the pop-up window, drag the left border rightwards to shrink it.



There will be some Unallocated space behind the system partition.

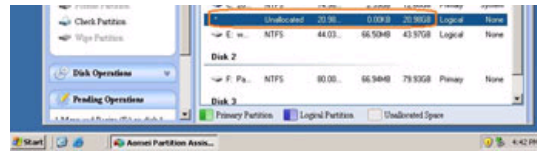


Awards

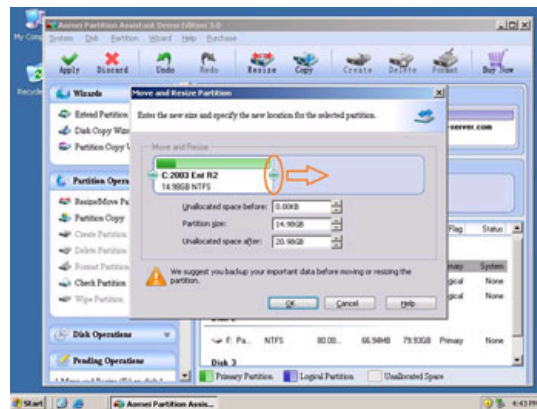


Clients Worldwide

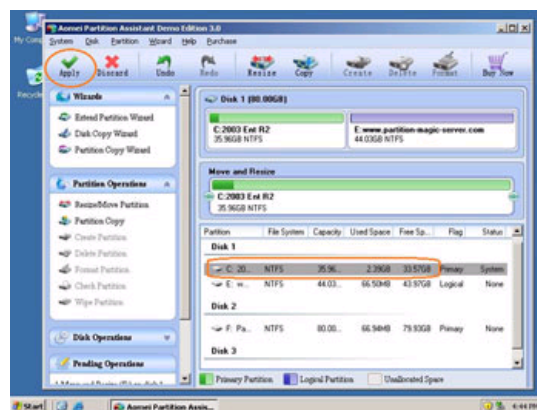




Step 2, Right-click the system partition and select "Resize", in the pop-up window, drag the right border rightwards to hold the Unallocated space.



Click "Apply" to proceed, done.



Now you have a "new" Server that can be used for a long time again.

[How to allocate free space from any data partition and add to C drive?](#)

### How to extend entire virtual disk space?

Step1: Open up Run dialogue from the start menu (Start -> Run) or hold down the Windows key and press R. Type "cmd" and hit enter to open up the Command Prompt.

Step2: Run VMware disk manager tool, the format is like this: "AA\vmware-vdiskmanager.exe" -x BB.GB(MB) "CC\DD.VMDK".

AA: The absolute path of vmware-vdiskmanager.exe (for example C:\Program files\VMware Workstation or C:\Program files\VMware Server)

BB: What size you want to extend the VMware virtual disk to

CC: The absolute path of the virtual disk you want to extend

DD: The name of the virtual disk want to extend

Input the command and press enter to proceed, after that, the virtual disk will be extended and there will be "BB.GB(MB) Unallocated space at the end of the virtual disk.

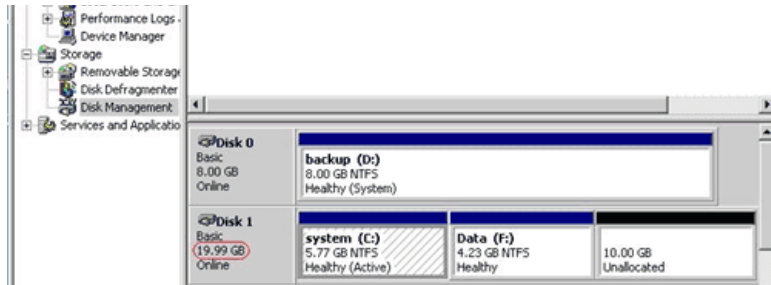
```
C:\WINDOWS\system32\cmd.exe
Microsoft Windows [Version 5.2.3790]
(C) Copyright 1985-2003 Microsoft Corp.

C:\Documents and Settings\Administrator>"G:\VMware Workstation\vmware-vdiskmanager.exe" -x 20GB "H:\test\2003-en-SP2\2003-en-SP2-0.vmdk"
Grow: 100% done.
Disk expansion completed successfully.

WARNING: If the virtual disk is partitioned, you must use a third-party
utility in the virtual machine to expand the size of the
partitions. For more information, see:
http://www.vmware.com/support/kb/enduser/std_adp.php?p_faqid=1647

C:\Documents and Settings\Administrator>
```

Volume	Layout	Type	File System	Status	Capacity	Free Space	% Free	Fault T
Backup (D:)	Partition	Basic	NTFS	Healthy (System)	8.00 GB	5.64 GB	70 %	No
Data (F:)	Partition	Basic	NTFS	Healthy	4.23 GB	4.21 GB	99 %	No
System (C:)	Partition	Basic	NTFS	Healthy (Active)	5.77 GB	826 MB	13 %	No



### How to extend entire virtual disk and C drive?

After extending the virtual disk, the new disk space will be added to the end of original virtual drive and displayed as Unallocated, which can be used to extend the system C drive.

#### Site Links:

[Home](#)  
[Products](#)  
[Download](#)  
[Buy Now](#)  
[Resource](#)  
[Screenshot](#)  
[Support](#)  
[Sitemap](#)

[Partition Magic Server 2003](#)  
[Partition Magic Server 2008](#)  
[Partition Magic Windows 2003](#)  
[Partition Magic Windows 2008](#)  
[Partition Magic Windows 2000](#)  
[Partition Manager Server](#)  
[Partition Manager Server 2003](#)

[Extend System partition Windows 2003](#)  
[Extend boot partition in Server 2003](#)  
[Extend C drive in Windows 2003 Server](#)  
[Extend boot partition in Windows 2008](#)  
[Extend C drive in Windows 2008 Server](#)  
[Increase partition size in Windows 2003](#)  
[Increase partition size in Windows 2008](#)

#### Partition Magic Server Resources:

[Server 2003 extend boot partition](#)  
[Resize Windows 2003 partitions](#)  
[Resize NTFS partition Windows 2003](#)  
[Server 2003 partition resize](#)  
[Server 2008 partition resize](#)  
[Extend C drive in VMware Server](#)  
[Repartition Windows 2003 Server](#)

[Resize RAID 1 partition](#)  
[Resize RAID 5 partition](#)  
[Extend RAID 5 partition](#)  
[SBS Server low disk space](#)  
[Change partition size 2003](#)  
[Expand partition Server 2003](#)  
[Shrink Extend Server 2008](#)

[Online Customer](#)

[Service](#)

Copyright © 2008-2011 Partition Magic Server ALL RIGHTS RESERVED.  
Partition Magic ® is a registered trademark of Symantec Corporation.