

Home

Download

Buy Now

Products

Resource

Screenshots

Support & FAQ

Home --> Products --> Resource --> Extend Boot Partition

Product Editions

- Server Edition
- Unlimited Edition **Hot!**
- Free Lifetime Upgrade Edition
- Editions Comparison

Main Features

- Partition Manager
- Disk & Partition Copy
- Extend Partition Wizard
- 1-click Allocate Free Space

Navigation Links

- Free Download
- Purchase Online
- Top 10 Reasons to Try
- Awards & Reviews
- Customer Stories
- Screenshots
- Support & FAQ
- New Featured Clients

Resource & Tutorial

- How to resize partitions
- How to merge partitions
- How to extend partition
- How to repartition disks
- Fix drive low disk space

Merge or resize partition to extend boot partition easily and safely.

Why extend boot partition?

As computer technicians, we are always asked with different questions, like how to speed up my computer and make it run faster, how to resize partition, especially how to extend boot partition on server or non-server system without reboot to maximize computer performance. Users, especially server users prefer to [extend system boot partition](#) to make hard disks and computers run faster and optimize the usage of the space. Would you please tell me the safest way to resize/extend boot (system partition) without data loss?

The definition of boot partition and system partition

The boot partition is the disk partition that contains the Windows operating system files and its support files, but not all files are responsible for booting.

The system partition is a disk partition that contains the boot sector and files such as NTLDR that are needed for booting Windows XP and earlier. (Windows Vista, Windows Server 2008 and Windows 7 use a newer boot loader called bootmgr that replaces NTLDR and is configured by using BCDEdit.exe).

The system partition can be different from the boot partition, although they are often on the same partition (drive C:). Windows setup places the initial system partition based on motherboard BIOS settings.

How to extend boot partition?

Extend NTFS boot partition with Windows built-in Disk Management tool

Actually it's a technical issue to resize/extend boot partition for common users. Maybe some people will say that we could use the disk management tool built-in Windows itself to resize partition, indeed, we could create, delete, format, extend and reduce partition with disk management under Microsoft Windows 2008 Server, Windows Vista and Windows 7, but there are many limitations.

1. Only Windows Vista/7 and Server 2008 has shrink and extend feature to extend boot partition, but it can only resize NTFS partition
2. It can only extend partition when there is unallocated space behind this partition.
3. What about the Windows XP and Server 2003 users? They could create, delete, format, but they could not resize them.
4. The worst thing is that we cannot preview or undo operation, which is terrible for server users if they made incorrect operations.

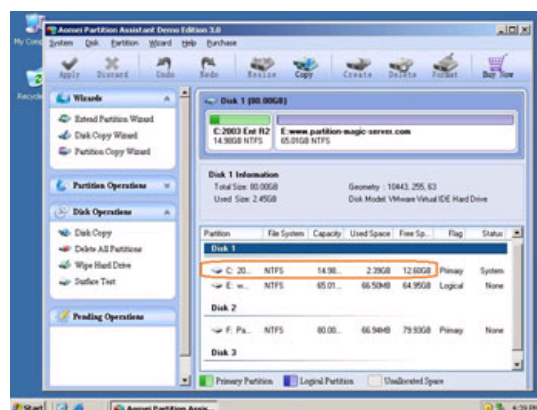
Resize/extend boot partition with professional partition manager software

As the best [Partition Magic Server alternative](#), [Partition Assistant Server](#) is an ALL-IN-ONE Windows partition solution and reliable disk management toolkit. It performs needed hard disk partition maintenance, provides powerful data protection, and minimizes server downtime to increase the efficiency of Windows-based system administration.

With Hot Resize feature, you can extend NTFS boot partition without rebooting computer. It is helpful, especially for Windows Server users.

How to extend boot partition fast and easily?

Step 1, Launch [Partition Magic Server](#), you'll see all disks and partitions that connected to your Server and free space, used space and other properties of each partition.



Right-click the data partition and select "Resize", in the pop-up window, drag the left border rightwards to shrink it.

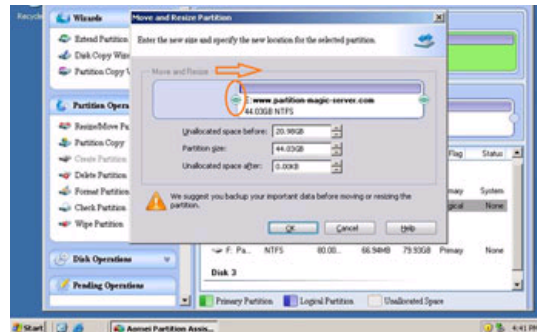


Awards

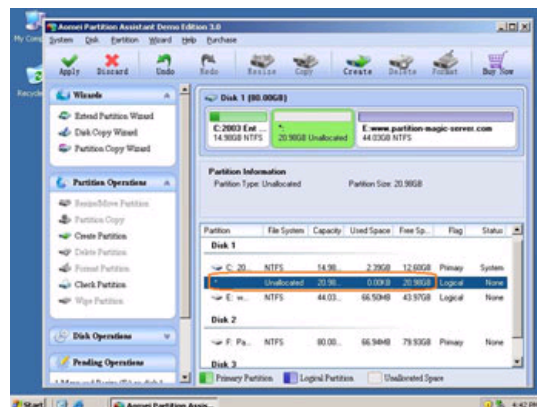


Clients Worldwide

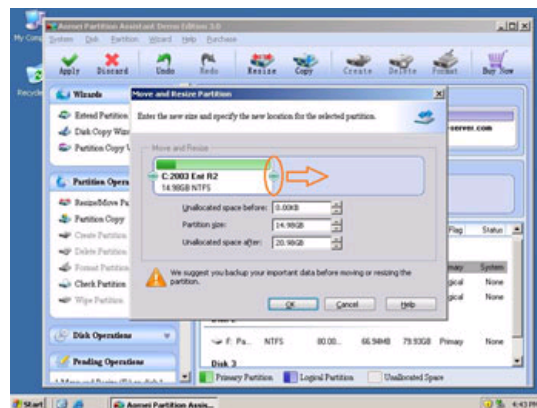




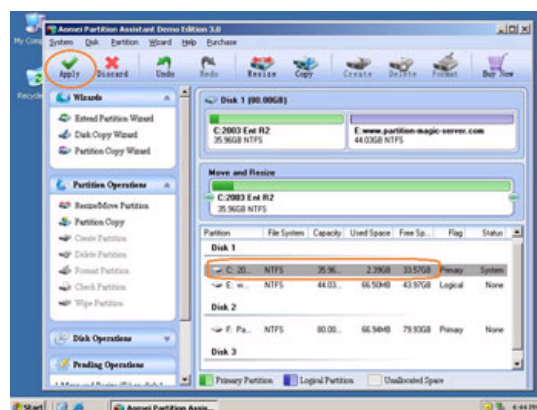
There will be some Unallocated space behind the system partition.



Step 2, Right-click the system partition and select "Resize", in the pop-up window, drag the right border rightwards to hold the Unallocated space.



Click "Apply" to proceed, done.



Now you have a "new" Server that can be used for a long time again.

How to allocate free space from any data partition and add to C drive?

For enterprise users, [Unlimited Edition](#) allows unlimited usage within your company to save time and money.

Related Articles

- ▶ [Best Partition Magic Windows Server software.](#)
- ▶ [Resize partition with Partition Magic for Server 2003.](#)
- ▶ [How to extend C drive on Windows 2003 Server?](#)
- ▶ [How to disable and fix SBS Server low disk space alert?](#)
- ▶ [How to resize RAID 5 partition with partition magic server software?](#)
- ▶ [How to partition 2003 with Acronis Disk Director?](#)
- ▶ [How to resize partition on Windows Server 2003 with partition Manager Server?](#)

Site Links:	
Home	Resource
Products	Screenshot
Download	Support
Buy Now	Sitemap

Partition Magic Server Resources:

Partition Magic Server 2003	Extend System partition Windows 2003	Server 2003 extend boot partition	Resize RAID 1 partition	Online Customer
Partition Magic Server 2008	Extend boot partition in Server 2003	Resize Windows 2003 partitions	Resize RAID 5 partition	
Partition Magic Windows 2003	Extend C drive in Windows 2003 Server	Resize NTFS partition Windows 2003	Extend RAID 5 partition	Service
Partition Magic Windows 2008	Extend boot partition in Windows 2008	Server 2003 partition resize	SBS Server low disk space	
Partition Magic Windows 2000	Extend C drive in Windows 2008 Server	Server 2008 partition resize	Change partition size 2003	
Partition Manager Server	Increase partition size in Windows 2003	Extend C drive in VMware Server	Expand partition Server 2003	
Partition Manager Server 2003	Increase partition size in Windows 2008	Repartition Windows 2003 Server	Shrink Extend Server 2008	

Copyright © 2008-2011 Partition Magic Server ALL RIGHTS RESERVED.
Partition Magic ® is a registered trademark of Symantec Corporation.