

Home

Download

Buy Now

Products

Resource

Screenshots

Support & FAQ

Home --> Products --> Resource --> Disk Space --> Server 2008 Low Disk Space

Product Editions

- Server Edition
- Unlimited Edition **Hot!**
- Free Lifetime Upgrade Edition
- Editions Comparison

Main Features

- Partition Manager
- Disk & Partition Copy
- Extend Partition Wizard
- 1-click Allocate Free Space

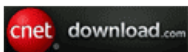
Navigation Links

- Free Download
- Purchase Online
- Top 10 Reasons to Try
- Awards & Reviews
- Customer Stories
- Screenshots
- Support & FAQ
- New Featured Clients

Resource & Tutorial

- How to resize partitions
- How to merge partitions
- How to extend partition
- How to repartition disks
- Fix drive low disk space

Awards



Clients Worldwide



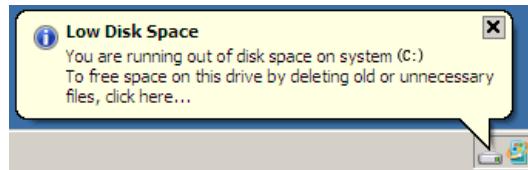
How to solve Server 2008 low disk space problem fast and easily?

Windows 2008 Server low disk space? System C drive running out of space on your 2008 Server? Don't worry, in this article, I'll introduce how to solve this problem fast and easily.

Windows 2008 Server low disk space

Today's hard drives feature jaw-dropping amounts of space, but no matter how big your drive, you'll be amazed at how quickly application/Windows update installs, browser caches, and temporary files can eat up your free space and clutter your system.

In Windows 2008 Server, if there is little free space in the system C drive, Windows pop up an alert about Low Disk Space as below:



Windows created the low disk space warning to alert computer users when their hard drive is running low on available disk space.

Windows 2008 Server low disk space will cause many problem, such as:

1. System runs much slower.
2. You cannot install any applications or Windows updates.
3. System crash if extremely low free space remains.

You'd better fix this problem as fast as possible, the eariler and the better, as no one wants to see the System crash, in that case, you have to start over and keep the Server under downtime for a long time.

How to solve Server 2008 low disk space problem

1. Clean up the hard disk drive

Run Windows Disk Cleanup function by right-clicking this partition. This tool will scan your drives and look for files that you can safely erase, but usually it free up a few space.

2. Remove programs.

Consider removing programs that you don't use and moving large media files (videos, music, graphics) to other partition, but you will spend a lot of time to do this. Don't try to delete Windows files or those you are not familiar with.

3. Extend system partition.

That is to say, shrink other data partition to extend the system C drive. This is the best choice, as the first two methods can solve Server 2008 low disk space problem temporarily and this alert will pop up shortly. By resizing partition, you can solve this problem easily, fast and permanently.

Choose the reliable partition software

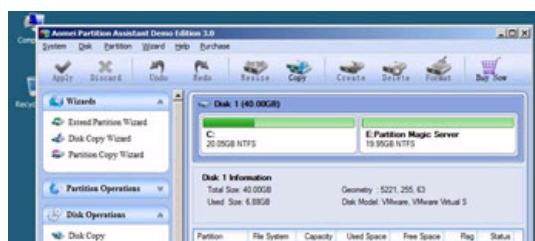
There is no doubt that the fastest way to solve Server 2008 low disk space problem is by resizing partition, but you should choose the reliable partition software, no one would like to see boot failure or data loss after resizing.

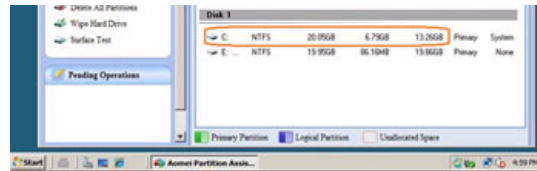
Based on the unique enhanced data protection technology and [Copy Wizard](#) built in [Partition Assistant Server](#), you don't need to worry about the data safety. Our [Server partition manager](#) is highly recommended by many professionals and editors, besides, many Fortune 500 companies select it to manage their Servers.

Extend partition to solve Windows 2008 low disk space problem fast and easily

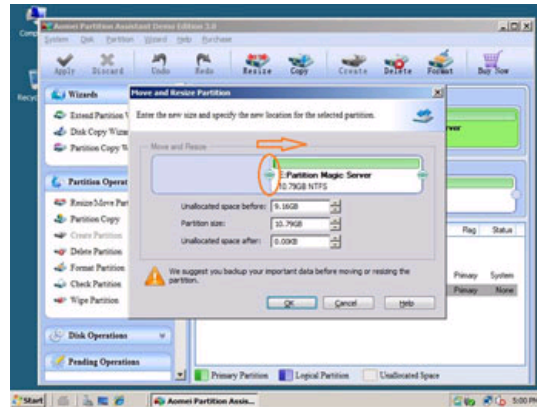
This is extremely easy to extend partition under Server 2008, just drag and move on the disk map to shrink an existing data partition to get some Unallocated space and then extend the system C drive, no need to delete or reformat partitions.

Step 1, Launch [Partition Magic Server](#), you'll see all disks and partitions that connected to your Server and free space, used space and other properties of each partition.

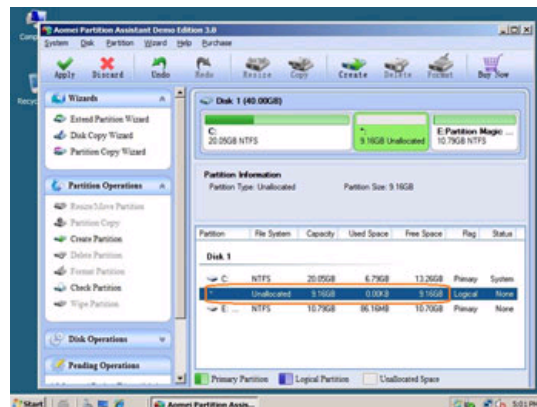




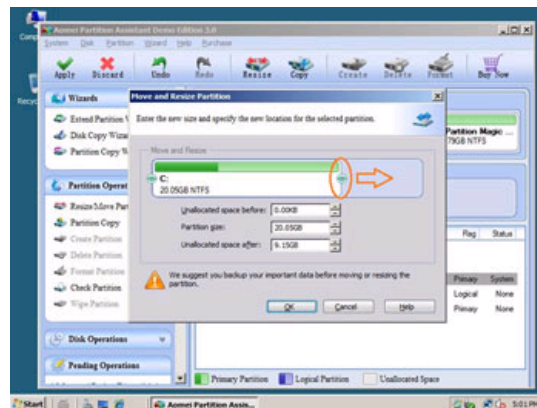
Right-click the data partition and select "Resize", in the pop-up window, drag the left border rightwards to shrink it.



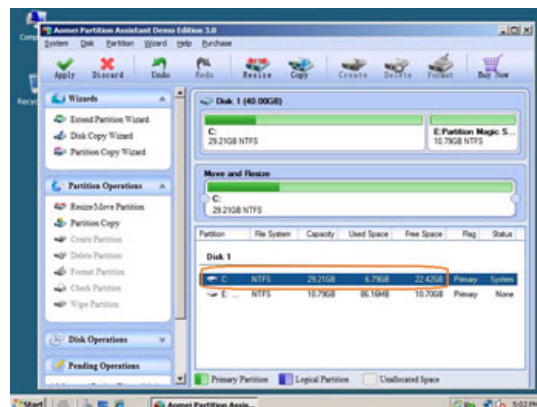
There will be some Unallocated space behind the system partition.



Step 2, Right-click C drive and select "Resize", in the pop-up window, drag the right border rightwards to hold the Unallocated space.



Click "Apply" to proceed, done. After several minutes, you'll have a "new" Server that can be used for a long time again.



How to allocate free space from any data partition and add to C drive?

For enterprise users, [Unlimited Edition](#) allows unlimited usage within your company to save time and money.

Benefits to resize partition with this Partition Magic Server

✓ All-in-one Partition Solution - All your partition and disk maintenance requirements can be fulfilled.

- ✔ Enhanced Data Protecting - No Data Loss
- ✔ Hot Resize - Extend NTFS system partition without rebooting
- ✔ Easy to use & user-friendly interface & working fast
- ✔ Trustworthy, many Fortune 500 companies select it to maintain their Servers
- ✔ [Read More...](#)

Site Links:

Home	Resource
Products	Screenshot
Download	Support
Buy Now	Sitemap

Partition Magic Server Resources:

Partition Magic Server 2003	Extend System partition Windows 2003	Server 2003 extend boot partition	Resize RAID 1 partition	Online Customer
Partition Magic Server 2008	Extend boot partition in Server 2003	Resize Windows 2003 partitions	Resize RAID 5 partition	
Partition Magic Windows 2003	Extend C drive in Windows 2003 Server	Resize NTFS partition Windows 2003	Extend RAID 5 partition	Service
Partition Magic Windows 2008	Extend boot partition in Windows 2008	Server 2003 partition resize	SBS Server low disk space	
Partition Magic Windows 2000	Extend C drive in Windows 2008 Server	Server 2008 partition resize	Change partition size 2003	
Partition Manager Server	Increase partition size in Windows 2003	Extend C drive in VMware Server	Expand partition Server 2003	
Partition Manager Server 2003	Increase partition size in Windows 2008	Repartition Windows 2003 Server	Shrink Extend Server 2008	

Copyright © 2008-2011 Partition Magic Server ALL RIGHTS RESERVED.

Partition Magic ® is a registered trademark of Symantec Corporation.