

Home --> Products --> Resource --> [Resize Partition](#) --> Resize Partition Windows 2008

Product Editions

- Server Edition
- Unlimited Edition **Hot!**
- Free Lifetime Upgrade Edition
- Editions Comparison

Main Features

- Partition Manager
- Disk & Partition Copy
- Extend Partition Wizard
- 1-click Allocate Free Space

Navigation Links

- Free Download
- Purchase Online
- Top 10 Reasons to Try
- Awards & Reviews
- Customer Stories
- Screenshots
- Support & FAQ
- New Featured Clients

Resource & Tutorial

- How to resize partitions
- How to merge partitions
- How to extend partition
- How to repartition disks
- Fix drive low disk space

How to resize Windows 2008 partition without losing data?

More and more updates and applications installed to the Windows 2008 Server system partition, browser caches, temporary files and restore points of Windows system protection can eat up your free space quickly.

When system C drive running out of space, what will you do? Windows Cleanup utility and programs uninstallation are useless to solve this problem. To start over is a solution but it may cause data losing and no one would like to waste their whole happy weekend to rebuild the Server.

The most time-saving and easiest way is to resize Windows 2008 partition with reliable [Partition Magic Server](#) software. That is to say, shrink other data partition and get some free space to [extend the system C drive](#), no need to start over and solve this problem much faster and easier.

Ensure data security when resizing Windows 2008 partition

There is no doubt that the fastest way to [solve Server 2008 low disk space problem](#) is by resizing partitions, but you should choose the reliable [Server partition software](#), no one would like to see boot failure or data loss after resizing.

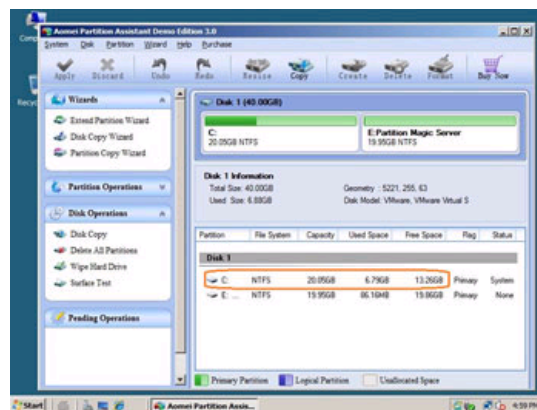
Based on the unique enhanced data protection technology and [Copy Wizard](#) built in [Partition Assistant Server](#), you don't need to worry about the data safety. Our [Server partition manager](#) is highly recommended by many professionals and editors, besides, many Fortune 500 companies select it to manage their Servers.

How to resize Windows 2008 partition?

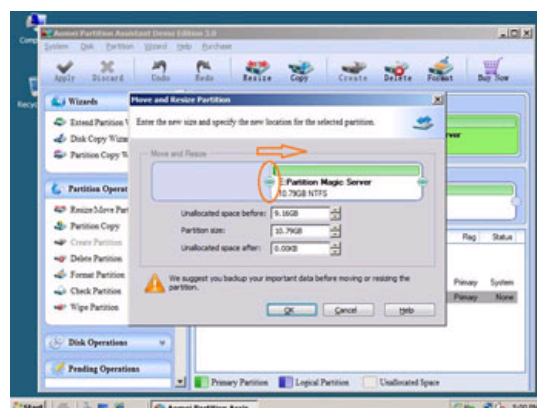
- It is extremely easy to resize Windows 2008 partition. Just drag and move on the disk map to shrink an existing data partition to get some Unallocated space, and then you can easily extend the system partition.
- Any operations you do on the Server will be listed in the "Operations Pending" column for you to preview.
- If the system partition is NTFS, you can extend it without rebooting.

Steps to resize Windows 2008 partition without deleting or formatting

Step 1, Launch [Partition Assistant Server](#), you'll see all disks and partitions that connected to your Server and free space, used space and other properties of each partition.

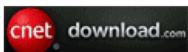


Right-click the data partition and select "Resize", in the pop-up window, drag the left border rightwards to shrink it.



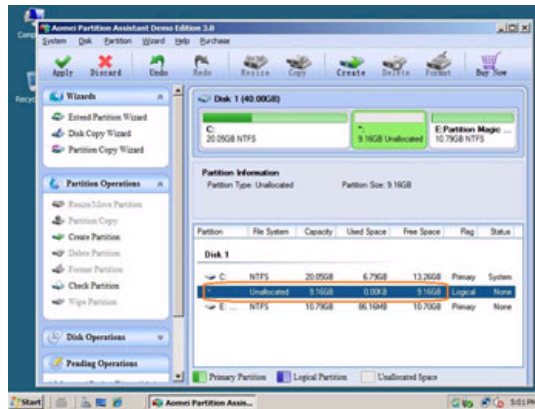
There will be some Unallocated space behind the system partition.

Awards

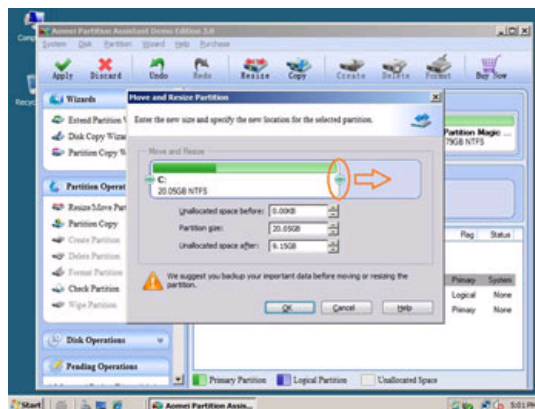


Clients Worldwide

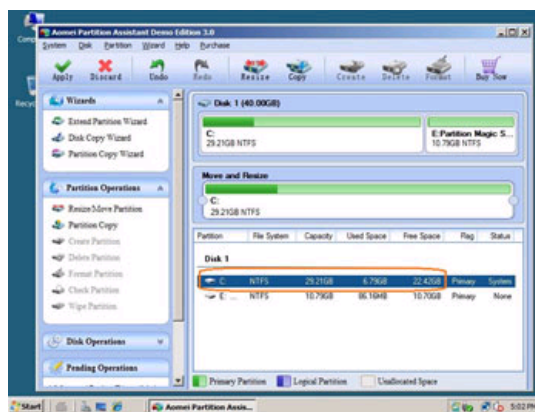




Step 2, Right-click C drive and select "Resize", in the pop-up window, drag the right border rightwards to hold the Unallocated space.



Click "Apply" to proceed, done. After several minutes, you'll have a "new" Server that can be used for a long time again.



For enterprise users, [Unlimited Edition](#) allows unlimited usage within your company to save time and money.

Benefits to resize Windows 2008 partition with this Partition Magic Server

- ✓ All-in-one Partition Solution - All your partition and disk maintenance requirements can be fulfilled.
- ✓ Enhanced Data Protecting - No Data Loss
- ✓ Hot Resize - Extend NTFS system partition without rebooting
- ✓ Easy to use & user-friendly interface & working fast
- ✓ Trustworthy, many Fortune 500 companies select it to maintain their Servers
- ✓ [Read More...](#)

Site Links:

[Home](#)
[Products](#)
[Download](#)
[Buy Now](#)

[Resource](#)
[Screenshot](#)
[Support](#)
[Sitemap](#)

[Partition Magic Server 2003](#)
[Partition Magic Server 2008](#)
[Partition Magic Windows 2003](#)
[Partition Magic Windows 2008](#)
[Partition Magic Windows 2000](#)
[Partition Manager Server](#)
[Partition Manager Server 2003](#)

[Extend System partition Windows 2003](#)
[Extend boot partition in Server 2003](#)
[Extend C drive in Windows 2003 Server](#)
[Extend boot partition in Windows 2008](#)
[Extend C drive in Windows 2008 Server](#)
[Increase partition size in Windows 2003](#)
[Increase partition size in Windows 2008](#)

Partition Magic Server Resources:

[Server 2003 extend boot partition](#)
[Resize Windows 2003 partitions](#)
[Resize NTFS partition Windows 2003](#)
[Server 2003 partition resize](#)
[Server 2008 partition resize](#)
[Extend C drive in VMware Server](#)
[Repartition Windows 2003 Server](#)

[Resize RAID 1 partition](#)
[Resize RAID 5 partition](#)
[Extend RAID 5 partition](#)
[SBS Server low disk space](#)
[Change partition size 2003](#)
[Expand partition Server 2003](#)
[Shrink Extend Server 2008](#)

[Online Customer](#)

[Service](#)