

Home

Download

Buy Now

Products

Resource

Screenshots

Support & FAQ

Home --> Products --> Resource --> Partition Manager --> Partition Manager Windows 2008 Server

Product Editions

- Server Edition
- Unlimited Edition **Hot!**
- Free Lifetime Upgrade Edition
- Editions Comparison

Main Features

- Partition Manager
- Disk & Partition Copy
- Extend Partition Wizard
- 1-click Allocate Free Space

Navigation Links

- Free Download
- Purchase Online
- Top 10 Reasons to Try
- Awards & Reviews
- Customer Stories
- Screenshots
- Support & FAQ
- New Featured Clients

Resource & Tutorial

- How to resize partitions
- How to merge partitions
- How to extend partition
- How to repartition disks
- Fix drive low disk space

Partition Manager Windows 2008 Server for Windows Server 32/64 bit.

Looking for a Partition Manager that working on Windows 2008 Server? In this article, I'll introduce the widely-used Windows 2008 Server partition manager.

What does Windows Server 2008 partition manager do?

Generally speaking, you need Windows Server 2008 partition manager to optimize the usage of your Windows server computer space. A typical example is that the system C drive running out of space, so you need to merge or resize partition to extend the system C drive on your Server to fix this problem.

Windows Server 2008 partition manager

[Partition Assistant Server Edition](#) is such magic Server partition manager and ALL-IN-ONE server disk management for Windows Server 2003, 2008, 2003 and XP, Vista, Windows 7.

It performs basic and advanced hard disk partition maintenance, for example, [resize](#), [merge](#), shrink, extend system and data partition without losing data, etc. It also provides data protection and disaster recovery. The flawless hard disk management functions are brought together: [Partition Manager](#), [Disk & Partition Copy](#) and [Extend Partition Wizard](#).

The unique and most important features of this Windows 2008 Server partition manager:

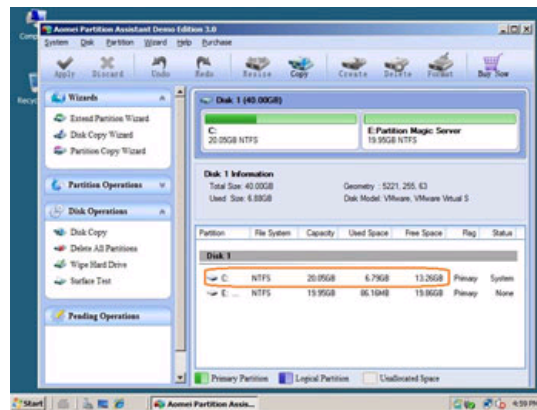
Enhanced Data Protection technology, with which you can merge, resize partition without data loss even when power off or hardware problem occurs.

With its **Hot Resize** feature, you can extend NTFS system partition without reboot to avoid Server downtime.

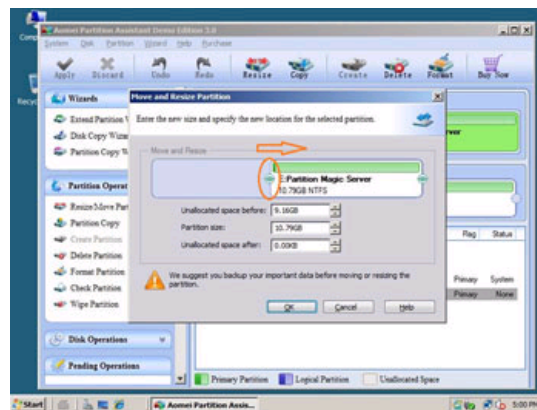
Due to its security, stability, easy to use and cost-effective, Partition Assistant Server is recommended as the Best Server partition manager by many professionals and editors.

How to repartition 2008 Server without data loss by this partition manager

Step 1, Launch [Partition Magic Server](#), you'll see all disks and partitions that connected to your Server and free space, used space and other properties of each partition.



Right-click the data partition and select "Resize", in the pop-up window, drag the left border rightwards to shrink it.



There will be some Unallocated space behind the system partition.

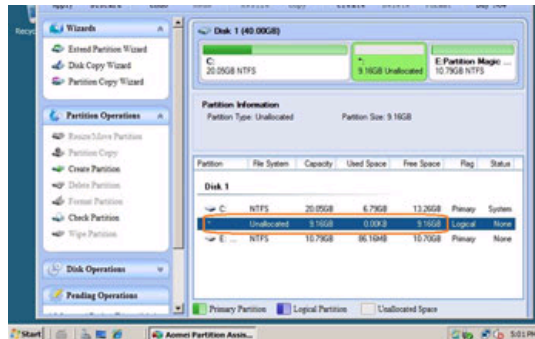


Awards

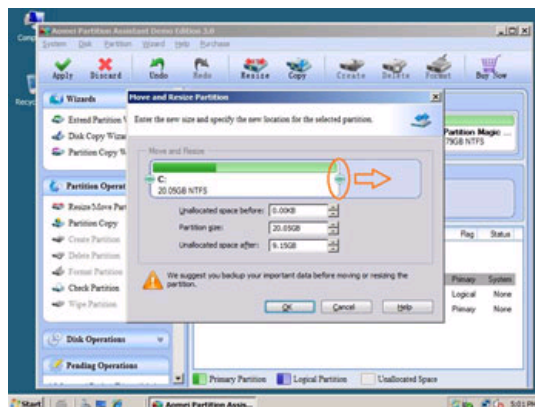


Clients Worldwide

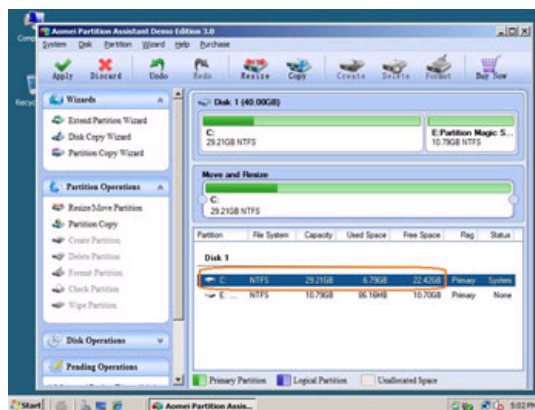




Step 2, Right-click C drive and select "Resize", in the pop-up window, drag the right border rightwards to hold the Unallocated space.



Click "Apply" to proceed, done. After several minutes, you'll have a "new" Server that can be used for a long time again.



How to allocate free space from any data partition and add to C drive?

 For enterprise users, [Unlimited Edition](#) allows unlimited usage within your company to save time and money.

Other benefits of this Server partition software

- ✔ Changes made on partitions can be previewed before applying to the hard disk to avoid incorrect operations.
- ✔ Easy to use, just dragging and drawing on the disk map to resize, merge partitions.
- ✔ Trusted product, many Fortune 500 companies select it to maintain their Servers.
- ✔ 30-day Money Back Guarantee.
- ✔ **Free lifetime** Technical support and after-sale service & Fast Live Support.

[Download free trial](#) of these Windows Server 2008 partition manager and check how they works.

Related Articles

- ▶ [Partition Magic Windows 2008 Server](#)
- ▶ [Partition Magic for Windows 2008 Server R2](#)
- ▶ [How to extend C drive in Windows 2008 Server?](#)
- ▶ [How to extend Server 2008 system partition?](#)
- ▶ [How to extend RAID 5 partition on Windows Server?](#)

Site Links:

[Home](#)
[Products](#)
[Download](#)
[Buy Now](#)
[Resource](#)
[Screenshot](#)
[Support](#)
[Sitemap](#)

[Partition Magic Server 2003](#)
[Partition Magic Server 2008](#)
[Partition Magic Windows 2003](#)
[Partition Magic Windows 2008](#)
[Partition Manager Server](#)
[Partition Manager Server 2003](#)

[Extend System partition Windows 2003](#)
[Extend boot partition in Server 2003](#)
[Extend C drive in Windows 2003 Server](#)
[Extend boot partition in Windows 2008](#)
[Extend C drive in Windows 2008 Server](#)
[Increase partition size in Windows 2003](#)
[Increase partition size in Windows 2008](#)

Partition Magic Server Resources:

[Server 2003 extend boot partition](#)
[Resize Windows 2003 partitions](#)
[Resize NTFS partition Windows 2003](#)
[Server 2003 partition resize](#)
[Server 2008 partition resize](#)
[Extend C drive in VMware Server](#)
[Repartition Windows 2003 Server](#)

[Resize RAID 1 partition](#)
[Resize RAID 5 partition](#)
[Extend RAID 5 partition](#)
[SBS Server low disk space](#)
[Change partition size 2003](#)
[Expand partition Server 2003](#)
[Shrink Extend Server 2008](#)

[Online Customer](#)

[Service](#)

