

Home

Download

Buy Now

Products

Resource

Screenshots

Support & FAQ

Home --> Products --> Resource --> Partition Magic --> Partition Magic Windows 2008

Product Editions

- Server Edition
- Unlimited Edition **Hot!**
- Free Lifetime Upgrade Edition
- Editions Comparison

Main Features

- Partition Manager
- Disk & Partition Copy
- Extend Partition Wizard
- 1-click Allocate Free Space

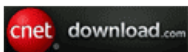
Navigation Links

- Free Download
- Purchase Online
- Top 10 Reasons to Try
- Awards & Reviews
- Customer Stories
- Screenshots
- Support & FAQ
- New Featured Clients

Resource & Tutorial

- How to resize partitions
- How to merge partitions
- How to extend partition
- How to repartition disks
- Fix drive low disk space

Awards



Clients Worldwide



Partition Magic Windows 2008 for 2008 Server 32 and 64 bit.

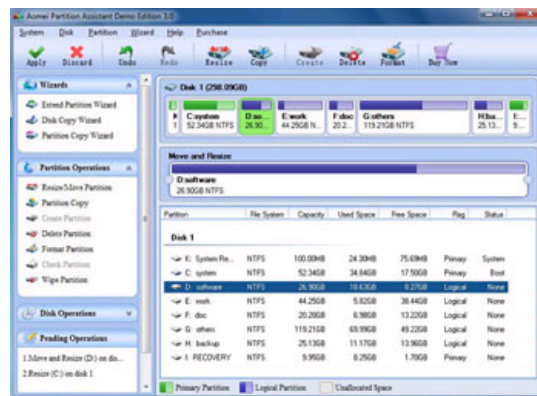
System C drive of your Windows 2008 Server low disk space? To solve this problem, many people search Partition Magic Windows 2008 Server to resize partition as Partition Magic is so famous though it is no longer for selling.

Can I use Partition Magic on Windows 2008 Server?

Partition Magic is considered to be the most popular partition software, but Partition Magic doesn't support Windows Server. There is Partition Magic Server edition - Server Magic, but since being acquired by Symantec, Server Magic has not been upgraded. So it is not possible for Server Magic to extend, resize server partition under any advanced Operating System, such as Windows Server 2003, 2008, etc.

Partition Magic Windows 2008 Server alternative

Luckily, there is Partition Magic Windows 2008 Server alternative such as Partition Magic Server to help you resize, merge, extend Windows 2008 Server partition without data loss.



Partition Magic Server is not only a magic Server Partition Manager but also an ALL-IN-ONE Server disk management toolkit for Windows Server 2000, 2003, 2008 and Windows XP, Vista, 7 (both 32 and 64 bit). It allows user to **Resize, Merge, Shrink, Extend** system and data partition. **Create, Delete, Format, Copy, Hide, Active, Convert** partition, etc.

Main benefits of the Partition Magic Windows 2008 alternative

Based on the unique enhanced data protection technology and **Copy Wizard** built in Partition Magic Server, you don't need to worry about the data safety. It is highly recommended by many professionals and editors, besides, many Fortune 500, Governments, Universities select it to manage their Servers.

With **Hot Resize** feature, this Partition Magic Windows 2008 Server helps you extend NTFS system partition without rebooting.

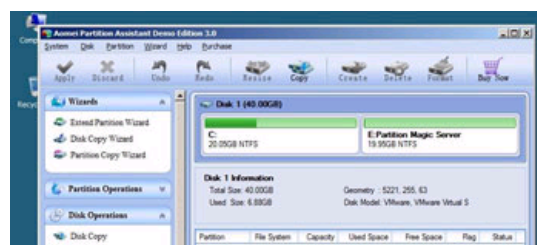
With its user-friendly interface, the functions of this Partition Magic Windows 2008 Server are easy to get access to, no matter whether you have experience using Partition Magic or not.

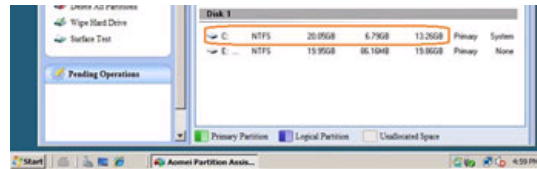
How to resize partition with this Partition Magic Windows 2008 Server

- It is extremely easy to **resize partitions on Windows 2008 Server**, you just need to shrink an existing data partition to get some free (Unallocated) space, and then you can easily increase the system partition size, no need to delete or reformat partitions.
- All operations you do will be listed in "Operation Pending" column for you to preview before applying to hard disk.
- If your Windows 2008 Server system partition is NTFS, you can increase its partition size under Windows without rebooting.

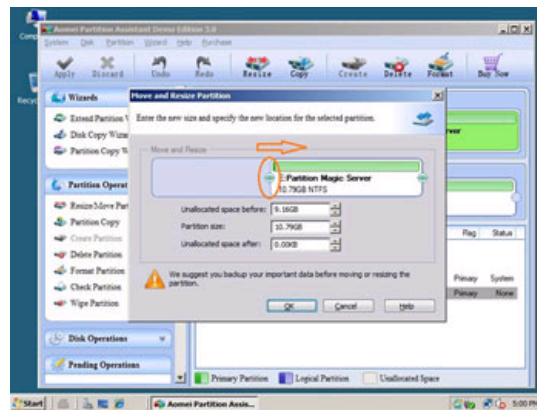
Partition Magic Windows 2008 Server resize partition tutorial

Step 1, Launch Partition Magic Server, you'll see all disks and partitions that connected to your Server and free space, used space and other properties of each partition.

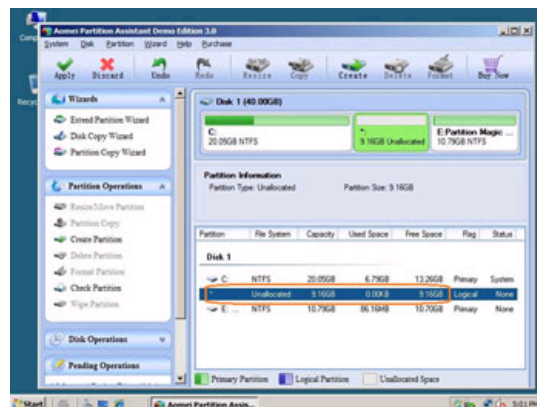




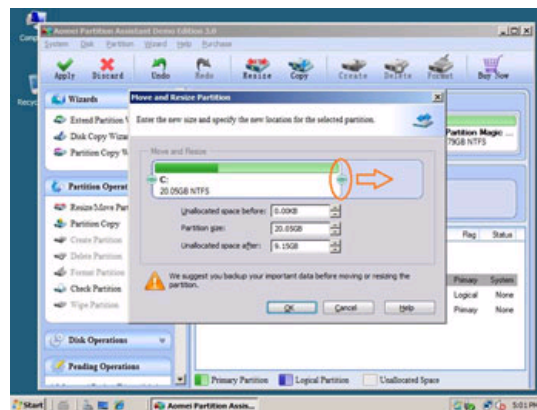
Right-click the data partition and select "Resize", in the pop-up window, drag the left border rightwards to shrink it.



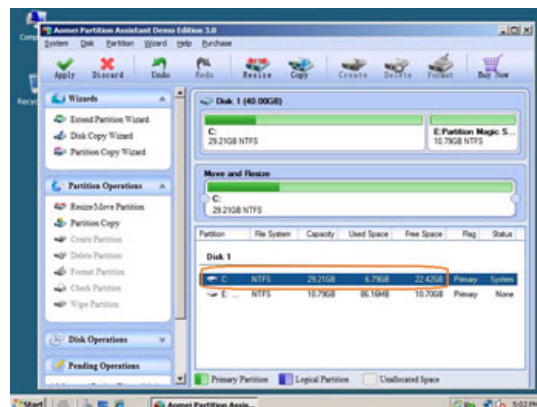
There will be some Unallocated space behind the system partition.



Step 2, Right-click C drive and select "Resize", in the pop-up window, drag the right border rightwards to hold the Unallocated space.



Click "Apply" to proceed, done. After several minutes, you'll have a "new" Server that can be used for a long time again.



For enterprise users, [Unlimited Edition](#) allows unlimited usage within your company to save time and money.

[How to allocate free space from any data partition and add to C drive?](#)

[Download this partition magic windows 2008 server](#) freely and check how easy it is to resize, merge and extend your Server partitions.

Related Articles

- ▶ [Partition Magic Windows 2008 Server R2](#)
- ▶ [How to extend boot partition in Windows 2008 Server?](#)
- ▶ [How to extend Windows 2008 system C drive?](#)
- ▶ [How to extend Windows 2008 Server partition?](#)
- ▶ [How to resize Windows 2008 Server partition?](#)

Site Links:

Home	Resource
Products	Screenshot
Download	Support
Buy Now	Sitemap

Partition Magic Server Resources:

Partition Magic Server 2003	Extend System partition Windows 2003	Server 2003 extend boot partition	Resize RAID 1 partition	Online Customer
Partition Magic Server 2008	Extend boot partition in Server 2003	Resize Windows 2003 partitions	Resize RAID 5 partition	
Partition Magic Windows 2003	Extend C drive in Windows 2003 Server	Resize NTFS partition Windows 2003	Extend RAID 5 partition	Service
Partition Magic Windows 2008	Extend boot partition in Windows 2008	Server 2003 partition resize	SBS Server low disk space	
Partition Magic Windows 2000	Extend C drive in Windows 2008 Server	Server 2008 partition resize	Change partition size 2003	
Partition Manager Server	Increase partition size in Windows 2003	Extend C drive in VMware Server	Expand partition Server 2003	
Partition Manager Server 2003	Increase partition size in Windows 2008	Repartition Windows 2003 Server	Shrink Extend Server 2008	

Copyright © 2008-2011 Partition Magic Server ALL RIGHTS RESERVED.
Partition Magic ® is a registered trademark of Symantec Corporation.