

Home

Download

Buy Now

Products

Resource

Screenshots

Support & FAQ

Home --> Products --> Resource --> Partition Magic --> Partition Magic Windows 2008 Server R2

Product Editions

- Server Edition
- Unlimited Edition **Hot!**
- Free Lifetime Upgrade Edition
- Editions Comparison

Main Features

- Partition Manager
- Disk & Partition Copy
- Extend Partition Wizard
- 1-click Allocate Free Space

Navigation Links

- Free Download
- Purchase Online
- Top 10 Reasons to Try
- Awards & Reviews
- Customer Stories
- Screenshots
- Support & FAQ
- New Featured Clients

Resource & Tutorial

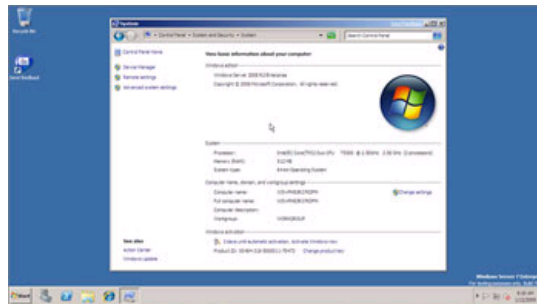
- How to resize partitions
- How to merge partitions
- How to extend partition
- How to repartition disks
- Fix drive low disk space

Partition Magic for Windows 2008 Server R2 to extend, resize partition.

System C drive of your Windows 2008 Server R2 running out of space? Need Partition Magic for Windows 2008 Server R2 to extend the system partition fast and without data loss? This page is what you are looking for.

Short Introduction of Windows Server 2008 R2

Windows Server 2008 R2 is a Server operating system produced by Microsoft. It was released to manufacturing on July 22, 2009 and launched on October 22, 2009. According to the Windows Server Team blog, the retail availability was September 14, 2009. It is built on Windows NT 6.1, the same core operating system used with the end-user oriented Windows 7. It is the first 64-bit only operating system release from Microsoft. Windows Server 2008 R2 is an update of Windows Server 2008.



Low disk space on Windows Server 2008 R2

Today's hard drives feature jaw-dropping amounts of space, but no matter how big your drive, you'll be amazed at how quickly application/Windows update installs, browser caches, and temporary files can eat up your free space and clutter your system.

No matter how highly Windows Server 2008 R2 is developed, after running the Server for a period, the system C drive also runs out of space.

System runs much slower and you cannot install any Windows updates and other applications. You need to solve this problem as as the system will crash if there is no little free space.

Can you use Partition Magic on Windows 2008 Server R2?

When talking about the partition software to extend, resize partitions, you may recall [Partition Magic](#), so you may search Partition Magic for Windows 2008 Server R2.

Yes, Partition Magic is considered to be the most popular partition software, but it only works on Windows PC. There is Partition Magic Server edition - [Server Magic](#), but since being acquired by Symantec, it has not been upgraded. So Server Magic is not able to extend, resize server partition under any advanced Operating System, such as Windows Server 2003, 2008, etc.

Partition Magic Alternative for Windows 2008 Server R2

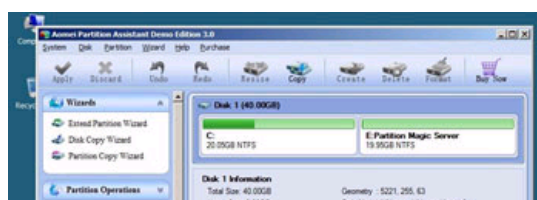
Comparing with Server Magic, [Partition Magic Server](#) supports more Operating systems, it is an ALL-IN-ONE server disk management toolkit for Windows Server 2000, 2003, 2008 and XP, Vista, Windows 7. It performs basic and advanced hard disk partition maintenance, for example, [resize partition](#), [merge partition](#), etc. The flawless hard disk management functions are brought together: [Partition Manager](#), [Disk & Partition Copy](#) and [Extend Partition Wizard](#).

Based on the unique Enhanced data protection technology, easy to use, full featured and other benefits, [Partition Assistant Server Edition](#) is highly recommended as the best Partition Magic alternative for Winows 2008 Server R2.

With [Partition Magic Server](#), you just need to drag and move on the disk map to shrink an existing data partition to get some Unallocated space, and then you can extend the sysem C drive. There is no need to delete or format partitions.

Steps to resize partition and extend C drive on Windows 2008 Server R2

Step 1, Launch [Partition Magic Server](#), you'll see all disks and partitions that connected to your Server and free space, used space and other properties of each partition.

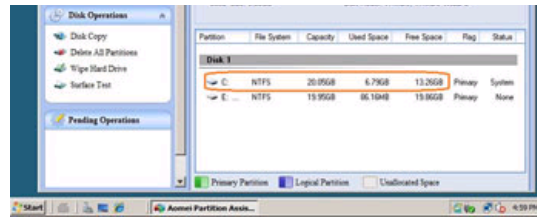


Awards

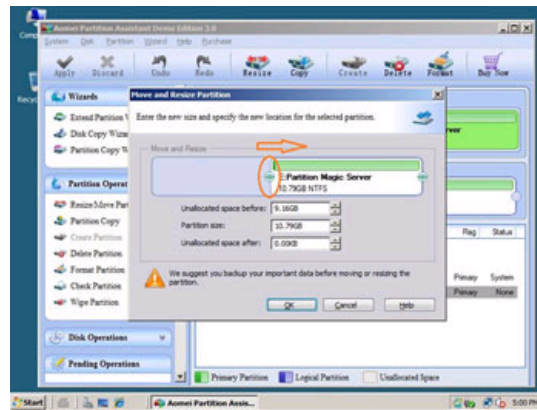


Clients Worldwide

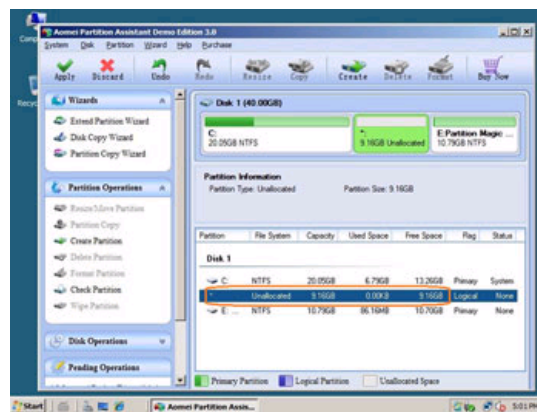




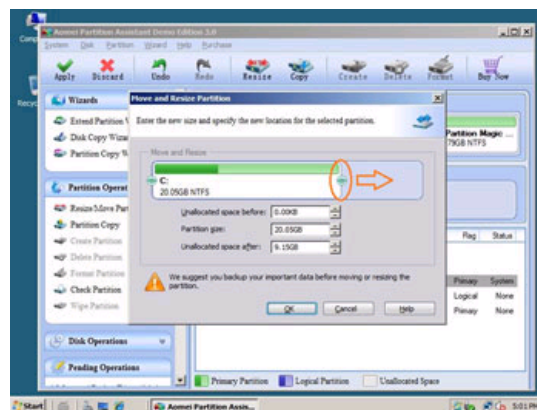
Right-click the data partition and select "Resize", in the pop-up window, drag the left border rightwards to shrink it.



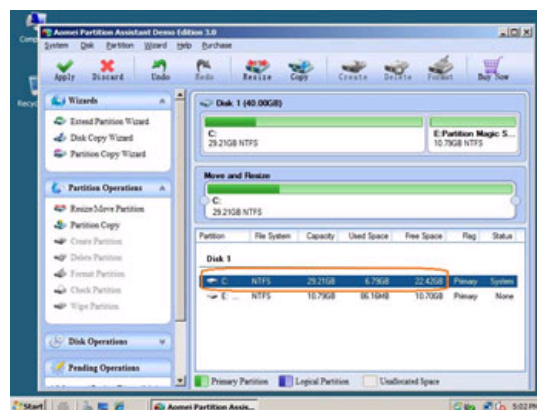
There will be some Unallocated space behind the system partition.



Step 2, Right-click C drive and select "Resize", in the pop-up window, drag the right border rightwards to hold the Unallocated space.



Click "Apply" to proceed, done. After several minutes, you'll have a "new" Server that can be used for a long time again.



For enterprise users, [Unlimited Edition](#) allows unlimited usage within your company to save time and money.

[Download this Server magic](#) freely and check how it works.

[How to allocate free space from any data partition and add to C drive?](#)

Related Articles

- ▶ [How to resize partition on Windows 2008 Server?](#)
- ▶ [How to extend Windows 2008 system partition?](#)
- ▶ [How to merge Server 2008 partitions?](#)
- ▶ [How to solve Windows 2008 Server low disk space problem?](#)
- ▶ [How to resize RAID 1 partition on Windows Server?](#)
- ▶ [How to extend RAID 5 virtual partitions?](#)
- ▶ [How to increase Windows 2008 partition size?](#)

Site Links:

- [Home](#)
- [Products](#)
- [Download](#)
- [Buy Now](#)
- [Resource](#)
- [Screenshot](#)
- [Support](#)
- [Sitemap](#)

Partition Magic Server Resources:

Partition Magic Server 2003	Extend System partition Windows 2003	Server 2003 extend boot partition	Resize RAID 1 partition	Online Customer
Partition Magic Server 2008	Extend boot partition in Server 2003	Resize Windows 2003 partitions	Resize RAID 5 partition	
Partition Magic Windows 2003	Extend C drive in Windows 2003 Server	Resize NTFS partition Windows 2003	Extend RAID 5 partition	Service
Partition Magic Windows 2008	Extend boot partition in Windows 2008	Server 2003 partition resize	SBS Server low disk space	
Partition Magic Windows 2000	Extend C drive in Windows 2008 Server	Server 2008 partition resize	Change partition size 2003	
Partition Manager Server	Increase partition size in Windows 2003	Extend C drive in VMware Server	Expand partition Server 2003	
Partition Manager Server 2003	Increase partition size in Windows 2008	Repartition Windows 2003 Server	Shrink Extend Server 2008	

Copyright © 2008-2011 Partition Magic Server ALL RIGHTS RESERVED.
Partition Magic ® is a registered trademark of Symantec Corporation.