

Home

Download

Buy Now

Products

Resource

Screenshots

Support & FAQ

Home --> Products --> Resource --> Partition Magic --> Partition Magic Server 2008

### Product Editions

- Server Edition
- Unlimited Edition **Hot!**
- Free Lifetime Upgrade Edition
- Editions Comparison

### Main Features

- Partition Manager
- Disk & Partition Copy
- Extend Partition Wizard
- 1-click Allocate Free Space

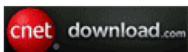
### Navigation Links

- Free Download
- Purchase Online
- Top 10 Reasons to Try
- Awards & Reviews
- Customer Stories
- Screenshots
- Support & FAQ
- New Featured Clients

### Resource & Tutorial

- How to resize partitions
- How to merge partitions
- How to extend partition
- How to repartition disks
- Fix drive low disk space

Awards



Clients Worldwide



## Partition Magic Server 2008 for Windows 2008 Server 32/64 bit

Many Server machines have been upgraded to Windows Server 2008, but due to more and more applications installed, the [system C: drive is running out of space](#). To resize partition without reinstalling Windows, you may recall [Partition Magic](#), so in this article I'll introduce how to fix low disk space problem with Partition Magic Server 2008.

### What is Partition Magic?

[Partition Magic](#) is a computer program for partition management from Power Quest corporation, which was acquired by Symantec in 2003. The program runs on Microsoft Windows Operating Systems or from a bootable CD-ROM. Partition Magic is compatible with Windows NT, 98, ME, 2000, and XP desktop editions. With Partition Magic, you can resize partition, merge partition without data loss. It is the first and considered to be the most popular partition software, but this famous partition software is no long for selling.

### Can I use Partition Magic for Server 2008?

[Partition Magic](#) is considered to be the most popular partition software, but Partition Magic doesn't support Windows Server. There is [Partition Magic Server edition - Server Magic](#), but since being acquired by Symantec, Server Magic has not been upgraded. So it is impossible for Server Magic to extend, resize server partition under any advanced Operating System, such as Windows 2003, 2008, etc.

So you need to [Partition Magic alternative](#) for Windows Server 2008, such as [Partition Assistant Server](#).

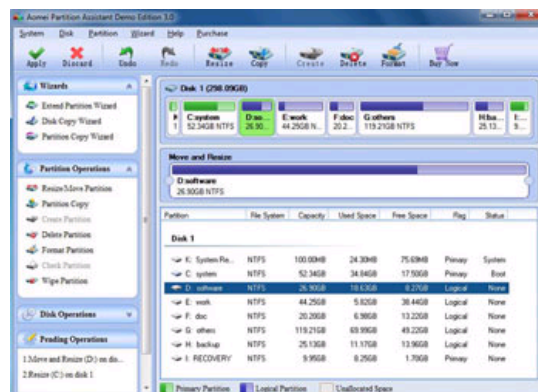
### Ensure data security with Partition Magic Server 2008

The security and stability are undoubtedly the most significant aspects for Server computers since a Server computer usually stores the most important classified and daily-used files. Based on the enhanced data protection technology and copy wizard built in Partition Assistant Server Edition, it is highly recommended with its excellent advantages while partitioning server 2008.

As Server Magic alternative to Windows Server 2008, [Partition Assistant Server](#) is an ALL-IN-ONE server disk management toolkit for Windows Server 2000, 2003, 2008 and XP, Vista, Windows 7. It performs basic and advanced hard disk partition maintenance, for example, [resize partition](#), [merge partition](#), etc. It also provides data protection and disaster recovery. The flawless hard disk management functions are brought together: [Partition Manager](#), [Disk & Partition Copy](#) and [Extend Partition Wizard](#).

Based on the unique Enhanced data protection technology, easy to use and other benefits, [Partition Assistant Server Edition](#) is highly recommended as the best Partition Magic alternative for Server 2008.

With [Partition Magic Server](#), you just need to drag and move on the disk map to shrink an existing data partition to get some Unallocated space, and then you can extend the system C drive. There is no need to delete or format partitions.



With this Partition Magic 2008 Server, you can [resize partition](#), [merge partitions](#), [extend system partition](#) without deleting or formatting. [Hide](#), [Create](#), [Format](#), [Convert](#), [Set Active](#), etc.

- ✓ See full features and benefits...
- ✓ How to resize partition, extend system partition in Windows 2008 Server?

Download this Server magic freely and check how it works.

For enterprise users, [Unlimited Edition](#) allows unlimited usage within your company to save time and money.

### Related Articles

▶ [How to extend partition on Server 2008?](#)

- ▶ [How to resize RAID 1 partition on Windows Server?](#)
- ▶ [How to resize RAID 5 partition for Windows Server?](#)
- ▶ [Partition Magic Server for Windows Server](#)
- ▶ [Partition Magic for Windows 2008 Server](#)

**Site Links:**

<a href="#">Home</a>	<a href="#">Resource</a>
<a href="#">Products</a>	<a href="#">Screenshot</a>
<a href="#">Download</a>	<a href="#">Support</a>
<a href="#">Buy Now</a>	<a href="#">Sitemap</a>

<a href="#">Partition Magic Server 2003</a>
<a href="#">Partition Magic Server 2008</a>
<a href="#">Partition Magic Windows 2003</a>
<a href="#">Partition Magic Windows 2008</a>
<a href="#">Partition Magic Windows 2000</a>
<a href="#">Partition Manager Server</a>
<a href="#">Partition Manager Server 2003</a>

<a href="#">Extend System partition Windows 2003</a>
<a href="#">Extend boot partition in Server 2003</a>
<a href="#">Extend C drive in Windows 2003 Server</a>
<a href="#">Extend boot partition in Windows 2008</a>
<a href="#">Extend C drive in Windows 2008 Server</a>
<a href="#">Increase partition size in Windows 2003</a>
<a href="#">Increase partition size in Windows 2008</a>

**Partition Magic Server Resources:**

<a href="#">Server 2003 extend boot partition</a>
<a href="#">Resize Windows 2003 partitions</a>
<a href="#">Resize NTFS partition Windows 2003</a>
<a href="#">Server 2003 partition resize</a>
<a href="#">Server 2008 partition resize</a>
<a href="#">Extend C drive in VMware Server</a>
<a href="#">Repartition Windows 2003 Server</a>

<a href="#">Resize RAID 1 partition</a>
<a href="#">Resize RAID 5 partition</a>
<a href="#">Extend RAID 5 partition</a>
<a href="#">SBS Server low disk space</a>
<a href="#">Change partition size 2003</a>
<a href="#">Expand partition Server 2003</a>
<a href="#">Shrink Extend Server 2008</a>