

Home

Download

Buy Now

Products

Resource

Screenshots

Support & FAQ

Home --> Products --> Resource --> Extend Partition --> Extend System Partition Windows 2008 Server

Product Editions

- Server Edition
- Unlimited Edition **Hot!**
- Free Lifetime Upgrade Edition
- Editions Comparison

Main Features

- Partition Manager
- Disk & Partition Copy
- Extend Partition Wizard
- 1-click Allocate Free Space

Navigation Links

- Free Download
- Purchase Online
- Top 10 Reasons to Try
- Awards & Reviews
- Customer Stories
- Screenshots
- Support & FAQ
- New Featured Clients

Resource & Tutorial

- How to resize partitions
- How to merge partitions
- How to extend partition
- How to repartition disks
- Fix drive low disk space

Awards



Clients Worldwide

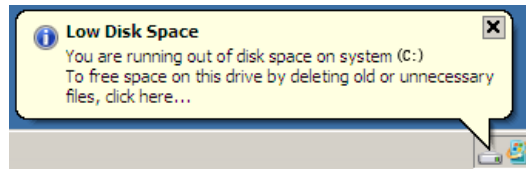


Extend Windows 2008 system partition fast and safely.

Low free disk space in Windows 2008 Server

Today's hard drives feature jaw-dropping amounts of space. But no matter how big your drive, you'll be amazed at how quickly application installs, browser caches, and temporary files can eat up your free space and clutter your system.

If system partition runs out of space, Windows 2008 Server pops up an alert as below:



Windows created the low disk space warning to alert computer users when their hard drive is running low on available disk space.

Windows 2008 Server low disk space will cause many problem, such as:

1. System runs much slower.
2. You cannot install any applications or Windows updates.
3. System crash if extremely low free space remains.

You'd better fix this problem as fast as possible, the earlier and the better, as no one wants to see the System crash, in that case, you have to start over and keep the Server under downtime for a long time.

The fast and easy way to solve this problem is extending Windows 2008 system partition. Shrink an existing data partition to release some free Unallocated space and add to the system partition, no need to delete or reformat partitions.

Extend Windows 2008 system partition under Disk Management

Though Microsoft added new Shrink and Extend feature under Windows 2008 Server Disk Management, but due to many shortages, it is useless and few people use this utility to extend Server 2008 system partition. The typical example is that you cannot extend system partition by shrinking other data partition, except that you can "move" the Unallocated space.

Extend Windows 2008 system partition with Partition Magic Server

With [Partition Magic Server](#) software, there are no such limitations, and it is extremely easy to extend system partition. You just need to drag and move on the disk map to shrink an existing data partition and get some Unallocated space to extend the system C drive, there is no need to delete, format partition or rebuild the Server.

Ensure data safety when extending Windows 2008 partition

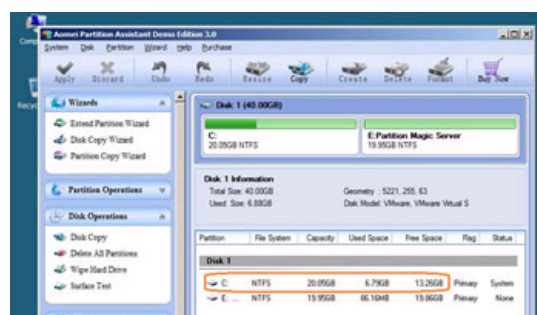
The security and stability are undoubtedly the most significant aspects for Server computers since a Server computer usually stores the most important classified and daily-used files. However, even a slight error on server computer might directly leads to boot failure or data loss.

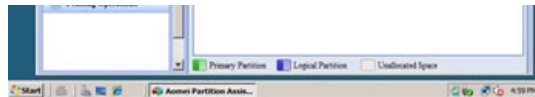
[Partition Assistant Server](#) is not only reliable itself with built-in Enhanced Data Protection but also integrated with the [Disk & Partition Copy Wizard](#) to ensure 100% data security. It is highly recommended by many professionals and editors, besides, many Fortune 500 companies, Governments and Universities select it to maintain there Servers.

Then how to extend system partition in Windows 2008 Server without losing data?

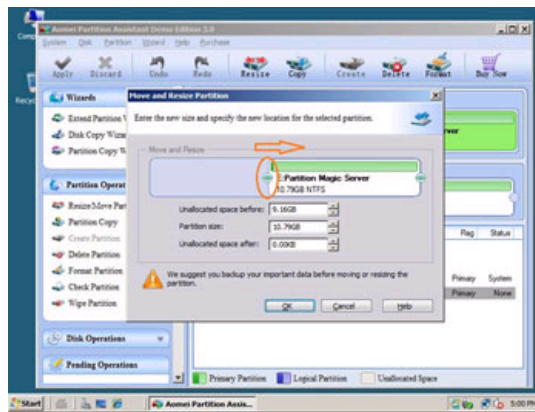
Steps to extend Windows 2008 system partition without deleting or reformatting

Step 1, Launch [Partition Magic Server](#), you'll see all disks and partitions that connected to your Server and free space, used space and other properties of each partition.

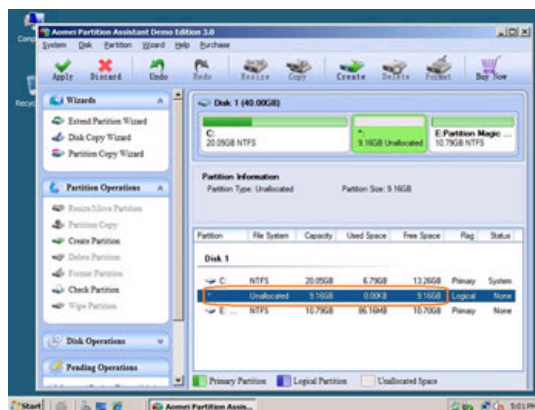




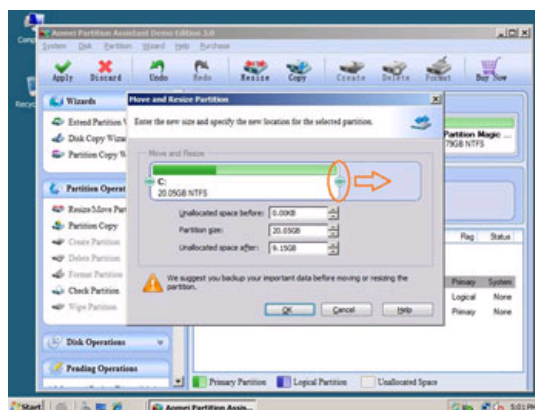
Right-click the data partition and select "Resize", in the pop-up window, drag the left border rightwards to shrink it.



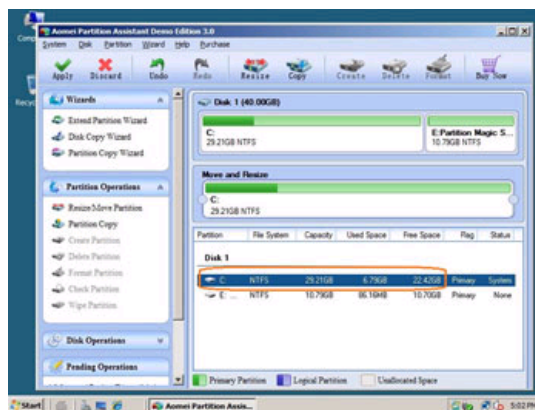
There will be some Unallocated space behind the system partition.



Step 2, Right-click C drive and select "Resize", in the pop-up window, drag the right border rightwards to hold the Unallocated space.



Click "Apply" to proceed, done. After several minutes, you'll have a "new" Server that can be used for a long time again.



For enterprise users, [Unlimited Edition](#) allows unlimited usage within your company to save time and money.

You can extend Windows 2008 system partition without reboot to save time if it is NTFS.

[How to allocate free space from any data partition and add to C drive?](#)

Benefits to extend Windows 2008 system partition with Partition Magic Server software

✔ All-in-one Partition Solution - All your partition and disk maintenance requirements can be fulfilled.

- ✔ Enhanced Data Protecting - No Data Loss
- ✔ Hot Resize - Extend NTFS system partition without rebooting
- ✔ Easy to use & user-friendly interface
- ✔ Trustworthy, many Fortune 500 companies select it to maintain their Servers
- ✔ [Read More...](#)

Related Articles

- ▶ [How to extend boot partition in Windows 2008 Server?](#)
- ▶ [Partition Magic for Windows 2008 Server](#)
- ▶ [How to resize RAID 1 partition without losing data?](#)
- ▶ [How to extend RAID 5 partition safely?](#)
- ▶ [How to extend C drive in Windows 2008?](#)

Site Links:

[Home](#)
[Products](#)
[Download](#)
[Buy Now](#)
[Resource](#)
[Screenshot](#)
[Support](#)
[Sitemap](#)

Partition Magic Server Resources:

[Partition Magic Server 2003](#)
[Partition Magic Server 2008](#)
[Partition Magic Windows 2003](#)
[Partition Magic Windows 2008](#)
[Partition Magic Windows 2000](#)
[Partition Manager Server](#)
[Partition Manager Server 2003](#)

[Extend System partition Windows 2003](#)
[Extend boot partition in Server 2003](#)
[Extend C drive in Windows 2003 Server](#)
[Extend boot partition in Windows 2008](#)
[Extend C drive in Windows 2008 Server](#)
[Increase partition size in Windows 2003](#)
[Increase partition size in Windows 2008](#)

[Server 2003 extend boot partition](#)
[Resize Windows 2003 partitions](#)
[Resize NTFS partition Windows 2003](#)
[Server 2003 partition resize](#)
[Server 2008 partition resize](#)
[Extend C drive in VMware Server](#)
[Repartition Windows 2003 Server](#)

[Resize RAID 1 partition](#)
[Resize RAID 5 partition](#)
[Extend RAID 5 partition](#)
[SBS Server low disk space](#)
[Change partition size 2003](#)
[Expand partition Server 2003](#)
[Shrink Extend Server 2008](#)

[Online Customer](#)

[Service](#)

Copyright © 2008-2011 Partition Magic Server ALL RIGHTS RESERVED.
Partition Magic ® is a registered trademark of Symantec Corporation.