

Home

Download

Buy Now

Products

Resource

Screenshots

Support & FAQ

Home --> Products --> Resource --> Extend Partition --> Extend System Partition Server 2008

Product Editions

- Server Edition
- Unlimited Edition **Hot!**
- Free Lifetime Upgrade Edition
- Editions Comparison

Main Features

- Partition Manager
- Disk & Partition Copy
- Extend Partition Wizard
- 1-click Allocate Free Space

Navigation Links

- Free Download
- Purchase Online
- Top 10 Reasons to Try
- Awards & Reviews
- Customer Stories
- Screenshots
- Support & FAQ
- New Featured Clients

Resource & Tutorial

- How to resize partitions
- How to merge partitions
- How to extend partition
- How to repartition disks
- Fix drive low disk space

Awards

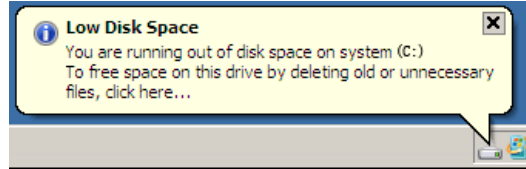


Clients Worldwide



Extend Server 2008 system partition without data loss, fast and easily.

After running Windows 2008 Server for a period, you'll see the low disk space alert as below:



Windows created the low disk space warning to alert computer users when their hard drive is running low on available disk space. [Windows 2008 Server low disk space](#) cause many problems, such as: 1. System runs much slower, 2. You cannot install any applications or Windows updates, 3. System crash if extremely low free space remains.

When this alert pops up, it means that you need to extend Server 2008 system partition as fast as possible, as no one wants to see data loss or system crash.

Is there a way to extend Server 2008 system partition without losing data or reinstalling?

Extend Server 2008 system partition under Disk Management

Though Microsoft added new Shrink and Extend feature under Windows 2008 Server Disk Management, but due to many shortages, such as:

1. You cannot extend system partition by shrinking other data partition, except that you can "move" the Unallocated space at the end of system partition.
2. You can only shrink partition and release a little free space though there is plenty of unused space in this partition.

Windows 2008 Server Disk Management is not a good utility to extend Server 2008 system partition.

Extend Server 2008 system partition with Partition Magic Server

With [Partition Magic Server](#) software, there are no such limitations, and it is extremely easy to extend system partition.

Just drag and move on the disk map to shrink an existing data partition and get some Unallocated space to extend the system C drive, there is no need to delete, format partition or rebuild the Server.

Ensure data safety when extending Server 2008 partition

The security and stability are undoubtedly the most significant aspects for Server computers since a Server computer usually stores the most important classified and daily-used files. However, even a slight error on server computer might directly leads to boot failure or data loss.

[Partition Assistant Server](#) is not only reliable itself with built-in Enhanced Data Protection but also integrated with the [Disk & Partition Copy Wizard](#) to ensure 100% data security. It is highly recommended by many professionals and editors, besides, many Fortune 500 companies, Governments and Universities select it to maintain there Servers.

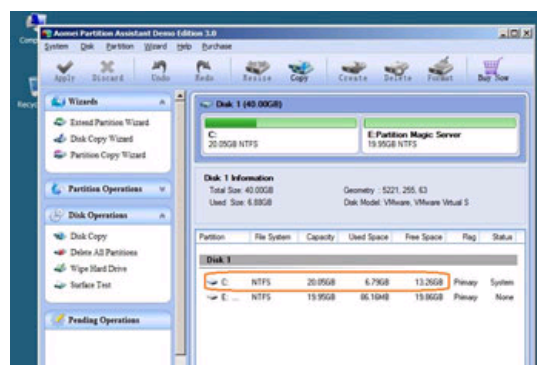
Then how to extend system partition in Server 2008 without losing data?

Steps to extend Server 2008 system partition without deleting or reformatting

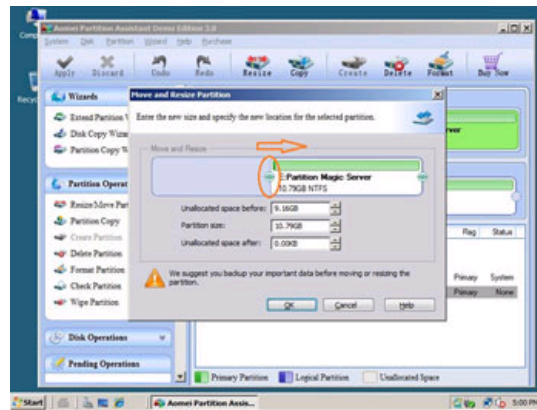
All operations you do on the Windows 2008 Server will be listed on the "Operation Pending" column for you to preview.

You can extend Server 2008 system partition without rebooting if it is NTFS.

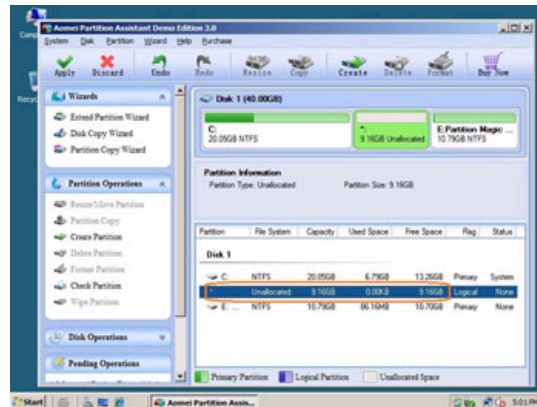
Step 1, Launch [Partition Magic Server](#), you'll see all disks and partitions that connected to your Server and free space, used space and other properties of each partition.



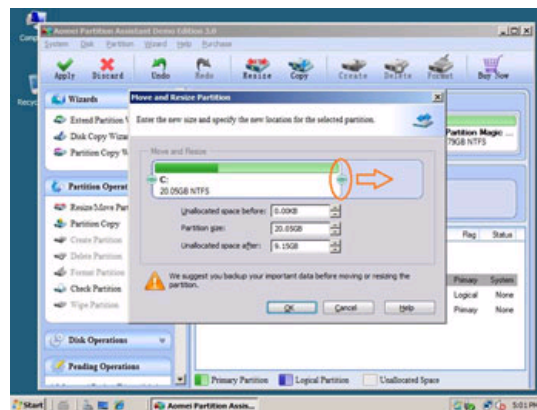
Right-click the data partition and select "Resize", in the pop-up window, drag the left border rightwards to shrink it.



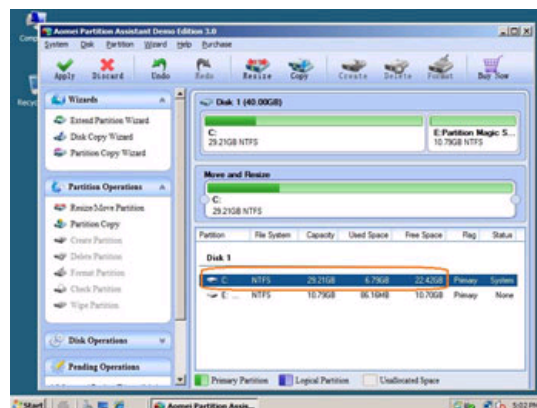
There will be some Unallocated space behind the system partition.



Step 2, Right-click C drive and select "Resize", in the pop-up window, drag the right border rightwards to hold the Unallocated space.



Click "Apply" to proceed, done. After several minutes, you'll have a "new" Server that can be used for a long time again.



For enterprise users, [Unlimited Edition](#) allows unlimited usage within your company to save time and money.

[How to allocate free space from any data partition and add to C drive?](#)

Benefits to extend Server 2008 system partition with Partition Magic Server software

- ✓ All-in-one Partition Solution - All your partition and disk maintenance requirements can be fulfilled.
- ✓ Enhanced Data Protecting - No Data Loss
- ✓ Hot Resize - Extend NTFS system partition without rebooting
- ✓ Easy to use & user-friendly interface

✔ Trustworthy, many Fortune 500 companies select it to maintain their Servers
✔ [Read More...](#)

Related Articles

- ▶ [How to extend boot partition in Windows 2008 Server?](#)
- ▶ [Partition Magic for Windows 2008 Server](#)
- ▶ [How to resize RAID 1 partition without losing data?](#)
- ▶ [How to extend RAID 5 partition safely?](#)
- ▶ [How to extend C drive in Windows 2008?](#)

Site Links:

[Home](#)
[Products](#)
[Download](#)
[Buy Now](#)
[Resource](#)
[Screenshot](#)
[Support](#)
[Sitemap](#)

Partition Magic Server Resources:

Partition Magic Server 2003	Extend System partition Windows 2003	Server 2003 extend boot partition	Resize RAID 1 partition	Online Customer
Partition Magic Server 2008	Extend boot partition in Server 2003	Resize Windows 2003 partitions	Resize RAID 5 partition	
Partition Magic Windows 2003	Extend C drive in Windows 2003 Server	Resize NTFS partition Windows 2003	Extend RAID 5 partition	Service
Partition Magic Windows 2008	Extend boot partition in Windows 2008	Server 2003 partition resize	SBS Server low disk space	
Partition Magic Windows 2000	Extend C drive in Windows 2008 Server	Server 2008 partition resize	Change partition size 2003	
Partition Manager Server	Increase partition size in Windows 2003	Extend C drive in VMware Server	Expand partition Server 2003	
Partition Manager Server 2003	Increase partition size in Windows 2008	Repartition Windows 2003 Server	Shrink Extend Server 2008	

Copyright © 2008-2011 Partition Magic Server ALL RIGHTS RESERVED.
Partition Magic ® is a registered trademark of Symantec Corporation.