

Home

Download

Buy Now

Products

Resource

Screenshots

Support & FAQ

Home --> Products --> Resource --> Extend Partition --> Extend Partition Server 2008

### Product Editions

- Server Edition
- Unlimited Edition **Hot!**
- Free Lifetime Upgrade Edition
- Editions Comparison

### Main Features

- Partition Manager
- Disk & Partition Copy
- Extend Partition Wizard
- 1-click Allocate Free Space

### Navigation Links

- Free Download
- Purchase Online
- Top 10 Reasons to Try
- Awards & Reviews
- Customer Stories
- Screenshots
- Support & FAQ
- New Featured Clients

### Resource & Tutorial

- How to resize partitions
- How to merge partitions
- How to extend partition
- How to repartition disks
- Fix drive low disk space

## How to extend Server 2008 partition fast and safely?

### Why extend Server 2008 partition?

All the size of the hard disk partitions are carefully allocated while building the 2008 Server. However, things are changing and the scheduled size may not always meet your needs, especially for the System partition, as Windows continues to download large updates.

You'll be amazed at how quickly application installs, browser caches, and temporary files can eat up your free space and clutter your system. Fortunately, nowadays you can extend Server 2008 partition without deleting or formatting.

### Ensure data safety when extending Server 2008 partition

There is no doubt that the fastest way to [solve Server 2008 low disk space problem](#) is by resizing and extending the boot partition, but you should choose the reliable partition software, no one would like to see boot failure or data loss after resizing.

Based on the unique enhanced data protection technology and [Copy Wizard](#) built in [Partition Assistant Server](#), you don't need to worry about the data safety. Our [Server partition manager](#) is highly recommended by many professionals and editors, besides, many Fortune 500 companies select it to manage their Servers.

Then how to extend Server 2008 partition without losing data?

### Extend Server 2008 partition with Partition Magic Server

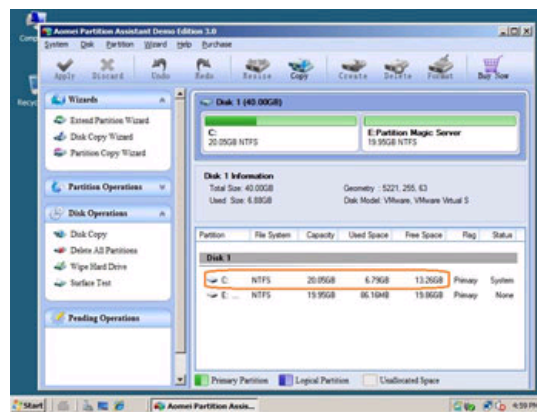
The better choice to extend partition on Server 2008 is using third party [Server partition software](#).

Shrink a data partition and extend the system partition.

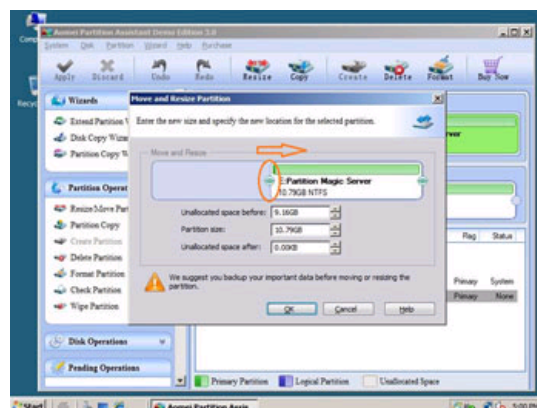
It is extremely easy to extend Server 2008 partition by resizing. You just need to drag and move on the disk map to shrink an existing data partition and get some Unallocated space to extend the system C drive, there is no need to delete, format partition or rebuild the Server.

### How to extend partition on Server 2008 fast and easily?

Step 1, Launch [Partition Magic Server](#), you'll see all disks and partitions that connected to your Server and free space, used space and other properties of each partition.



Right-click the data partition and select "Resize", in the pop-up window, drag the left border rightwards to shrink it.



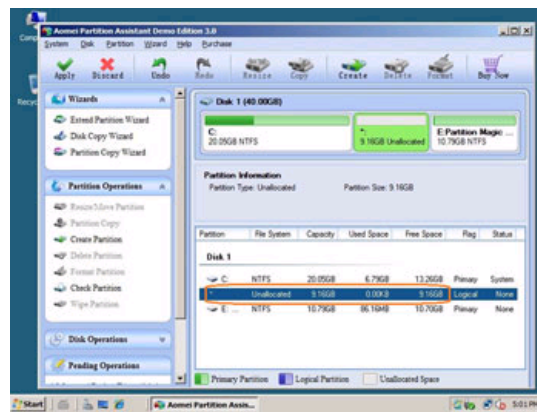
Awards



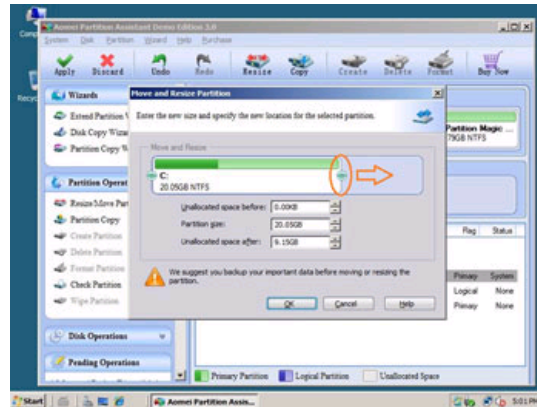
Clients Worldwide



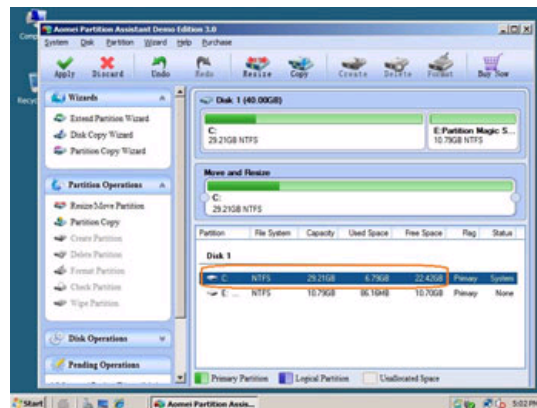
There will be some Unallocated space behind the system partition.



Step 2, Right-click C drive and select "Resize", in the pop-up window, drag the right border rightwards to hold the Unallocated space.



Click "Apply" to proceed, done. After several minutes, you'll have a "new" Server that can be used for a long time again.



How to allocate free space from any data partition and add to C drive?

 For enterprise users, [Unlimited Edition](#) allows unlimited usage within your company to save time and money.

#### Site Links:

[Home](#)  
[Products](#)  
[Download](#)  
[Buy Now](#)

[Resource](#)  
[Screenshot](#)  
[Support](#)  
[Sitemap](#)

[Partition Magic Server 2003](#)  
[Partition Magic Server 2008](#)  
[Partition Magic Windows 2003](#)  
[Partition Magic Windows 2008](#)  
[Partition Magic Windows 2000](#)  
[Partition Manager Server](#)  
[Partition Manager Server 2003](#)

[Extend System partition Windows 2003](#)  
[Extend boot partition in Server 2003](#)  
[Extend C drive in Windows 2003 Server](#)  
[Extend boot partition in Windows 2008](#)  
[Extend C drive in Windows 2008 Server](#)  
[Increase partition size in Windows 2003](#)  
[Increase partition size in Windows 2008](#)

#### Partition Magic Server Resources:

[Server 2003 extend boot partition](#)  
[Resize Windows 2003 partitions](#)  
[Resize NTFS partition Windows 2003](#)  
[Server 2003 partition resize](#)  
[Server 2008 partition resize](#)  
[Extend C drive in VMware Server](#)  
[Repartition Windows 2003 Server](#)

[Resize RAID 1 partition](#)  
[Resize RAID 5 partition](#)  
[Extend RAID 5 partition](#)  
[SBS Server low disk space](#)  
[Change partition size 2003](#)  
[Expand partition Server 2003](#)  
[Shrink Extend Server 2008](#)

[Online Customer](#)

[Service](#)