

Home

Download

Buy Now

Products

Resource

Screenshots

Support & FAQ

Home --> Products --> Resource --> Extend Partition --> Extend C Drive Windows 2008 Server

### Product Editions

- Server Edition
- Unlimited Edition **Hot!**
- Free Lifetime Upgrade Edition
- Editions Comparison

### Main Features

- Partition Manager
- Disk & Partition Copy
- Extend Partition Wizard
- 1-click Allocate Free Space

### Navigation Links

- Free Download
- Purchase Online
- Top 10 Reasons to Try
- Awards & Reviews
- Customer Stories
- Screenshots
- Support & FAQ
- New Featured Clients

### Resource & Tutorial

- How to resize partitions
- How to merge partitions
- How to extend partition
- How to repartition disks
- Fix drive low disk space

### How to extend C drive in Windows 2008 Server fast and safely?

Today's hard drives feature jaw-dropping amounts of space. But no matter how big your drive, you'll be amazed at how quickly application installs, browser caches, and temporary files can eat up your free space and clutter your system.

After running Windows 2008 Server for a period, the system **C drive runs out of space**. If there is no free space on the system partition, Operating System runs much slower immediately and you cannot install any updates or other applications, the worst, system crash, so you'd better fix this problem as fast as possible.

The best solution is extending Windows 2008 C drive and add more free space from other data partition, as you can solve this problem fast, easily and permanently.

All partitions have been allocated when building the Server, is it possible to change the partition size without losing data? Yes, in this article I'll introduce how to shrink other data partition and extend Server 2008 C drive without deleting or reformatting.

### How to extend Windows 2008 Server C drive?

As Microsoft improved the ability to manage disk partitions and added new "Shrink" and "Extend" feature under Windows 2008 Server Disk Management, some people recommend extend C drive with this built-in utility, but in fact, Windows 2008 Server Disk Management is not a good tool, as it still has many disadvantages.

The typical example is that you cannot extend C drive by shrinking other data partitions, as the Unallocated space is behind the data partition after shrinking. In fact, only when the Unallocated space is behind the system partition, you can extend the C drive, which is the same with the "bad" diskpart command line.

### Extend C drive in Windows 2008 with Partition Magic Server Software

There are no such limitations by using third [Server partition software](#), you just need to drag and move on the disk map to shrink an existing data partition to get some Unallocated space at the end of system C: drive, and then, you can easily extend C drive without deleting or formatting partitions.

In technical forums, many professionals recommend [Partition Magic Server](#). Based on the enhanced data protection technology, [Copy Wizard](#) built in Partition Magic Server Edition, you don't need to worry about data security. Besides, It is able to extend NTFS C drive without rebooting.

It is not only a partition resizing utility, but also an all-in-one partition solution to better maintain your Server and improve its performance.

### How to extend Server 2008 C drive with Partition Assistant Server?

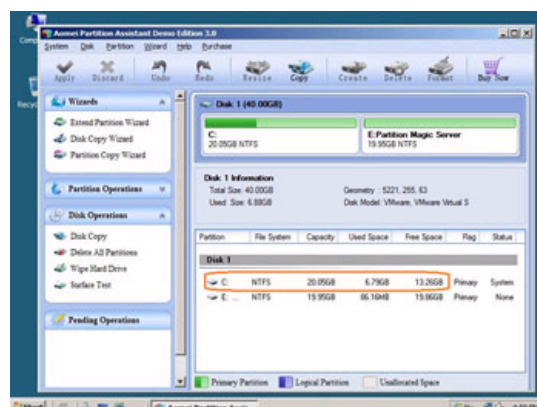
Two choices:

1. Merge system C drive and a data partition directly. ([how to merge Windows Server 2008 partitions](#))
2. Shrink a data partition and extend C drive.

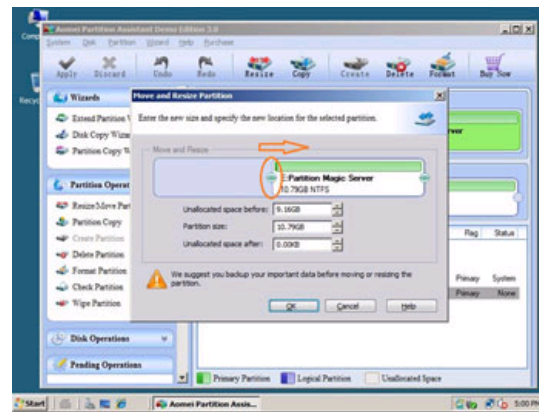
It is extremely easy to extend C drive on 2008 Server by resizing partition. You just need to drag and move on the disk map to shrink an existing data partition to get some Unallocated space and then extend the system C drive.

### Steps to extend C drive in Windows 2008 Server without deleting or formatting:

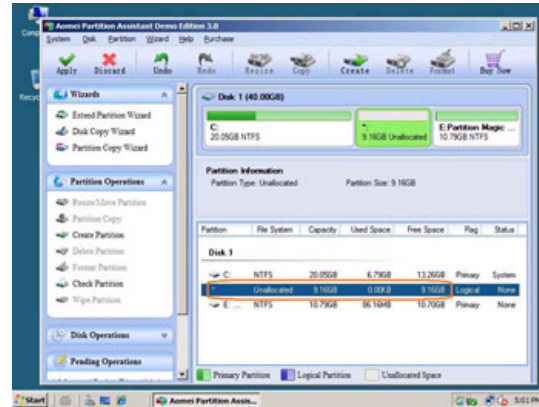
Step 1, Launch [Partition magic Server](#), you'll see all disks and partitions that connected to your Server and free space, used space and other properties of each partition.



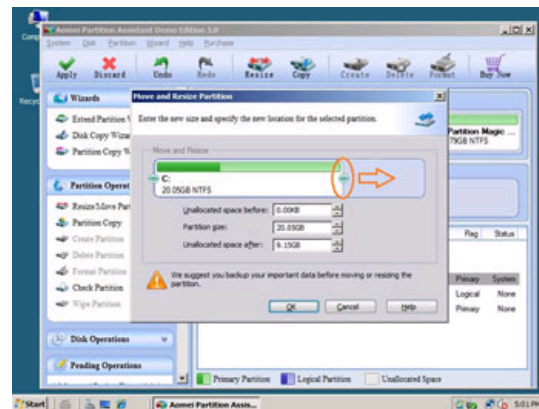
Right-click the data partition and select "Resize", in the pop-up window, drag the left border rightwards to shrink it.



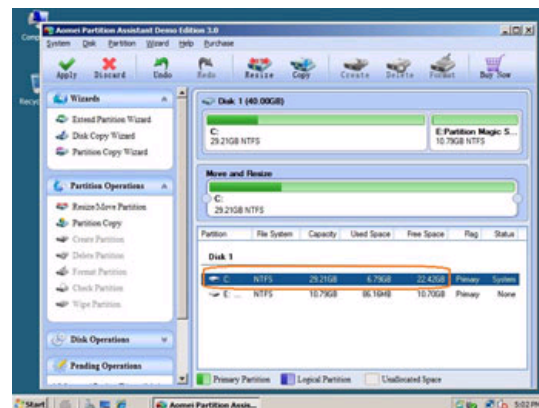
There will be some Unallocated space behind the system partition.



Step 2, Right-click C drive and select "Resize", in the pop-up window, drag the right border rightwards to hold the Unallocated space.



Click "Apply" to proceed, done. After several minutes, you'll have a "new" Server that can be used for a long time again.



How to allocate free space from any data partition and add to C drive?

 For enterprise users, [Unlimited Edition](#) allows unlimited usage within your company to save time and money.

[Full Features](#) || [Download Trial](#) || [Buy Now](#)

## Related Articles

- ▶ [Partition Magic Windows 2008 Server](#)
- ▶ [How to resize partition on Windows 2008 Server?](#)
- ▶ [How to extend partition for Server 2008?](#)
- ▶ [Partition Magic for Windows 2008 Server R2](#)
- ▶ [How to resize RAID 1 partition under Windows Server?](#)

#### Site Links:

|                          |                            |
|--------------------------|----------------------------|
| <a href="#">Home</a>     | <a href="#">Resource</a>   |
| <a href="#">Products</a> | <a href="#">Screenshot</a> |
| <a href="#">Download</a> | <a href="#">Support</a>    |
| <a href="#">Buy Now</a>  | <a href="#">Sitemap</a>    |

#### Partition Magic Server Resources:

|   |   |  |  |                                 |
|---|---|--|--|---------------------------------|
| <a href="#">Partition Magic Server 2003</a>   | <a href="#">Extend System partition Windows 2003</a>    | <a href="#">Server 2003 extend boot partition</a>  | <a href="#">Resize RAID 1 partition</a>      | <a href="#">Online Customer</a> |
| <a href="#">Partition Magic Server 2008</a>   | <a href="#">Extend boot partition in Server 2003</a>    | <a href="#">Resize Windows 2003 partitions</a>     | <a href="#">Resize RAID 5 partition</a>      |                                 |
| <a href="#">Partition Magic Windows 2003</a>  | <a href="#">Extend C drive in Windows 2003 Server</a>   | <a href="#">Resize NTFS partition Windows 2003</a> | <a href="#">Extend RAID 5 partition</a>      | <a href="#">Service</a>         |
| <a href="#">Partition Magic Windows 2008</a>  | <a href="#">Extend boot partition in Windows 2008</a>   | <a href="#">Server 2003 partition resize</a>       | <a href="#">SBS Server low disk space</a>    |                                 |
| <a href="#">Partition Magic Windows 2000</a>  | <a href="#">Extend C drive in Windows 2008 Server</a>   | <a href="#">Server 2008 partition resize</a>       | <a href="#">Change partition size 2003</a>   |                                 |
| <a href="#">Partition Manager Server</a>      | <a href="#">Increase partition size in Windows 2003</a> | <a href="#">Extend C drive in VMware Server</a>    | <a href="#">Expand partition Server 2003</a> |                                 |
| <a href="#">Partition Manager Server 2003</a> | <a href="#">Increase partition size in Windows 2008</a> | <a href="#">Repartition Windows 2003 Server</a>    | <a href="#">Shrink Extend Server 2008</a>    |                                 |

Copyright © 2008-2011 Partition Magic Server ALL RIGHTS RESERVED.

Partition Magic ® is a registered trademark of Symantec Corporation.