

Home --> Products --> Resource --> VMware --> Resize Windows 2003 Partition VMware

Product Editions

- Server Edition
- Unlimited Edition **Hot!**
- Free Lifetime Upgrade Edition
- Editions Comparison

Main Features

- Partition Manager
- Disk & Partition Copy
- Extend Partition Wizard
- 1-click Allocate Free Space

Navigation Links

- Free Download
- Purchase Online
- Top 10 Reasons to Try
- Awards & Reviews
- Customer Stories
- Screenshots
- Support & FAQ
- New Featured Clients

Resource & Tutorial

- How to resize partitions
- How to merge partitions
- How to extend partition
- How to repartition disks
- Fix drive low disk space

How to resize Windows 2003 partition in VMware workstation or Server

VMware are so popular with the public since it supports any operations like the really machine. However VMware often encounter the partition size or disk size problem since it is extremely large and it will become larger when installing with operating systems and store files. Can you resize VMware Windows 2003 partitions after you have set the partition?

The good news is with [Partition Magic Server](#) software - [Partition Assistant Server](#), you can easily [resize Windows 2003 Server partition](#) for physical disk partition or VMware virtual disk partitions without data loss.

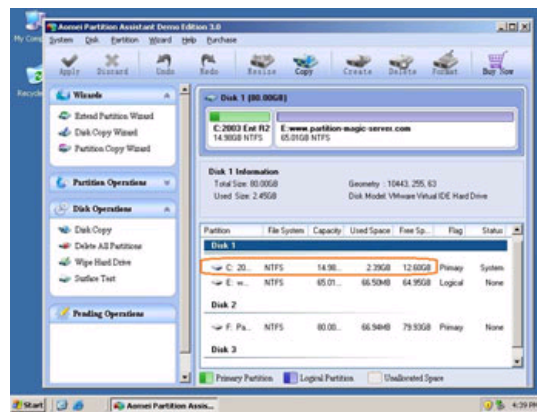
How to resize Windows 2003 partition in VMware

If there is free space in other data partition on the same virtual disk, you just need to shrink the data partition to get some free (Unallocated) space at the end of the system partition, and then you can easily extend the system C drive.

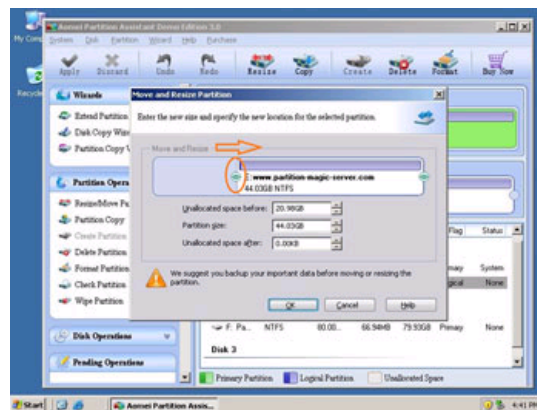
If the entire virtual disk is too small and no free space in other data partition, or there is only C drive in the virtual disk, you need to [extend the VMware virtual disk](#) before resizing partition.

Steps to resize VMware Windows 2003 partition

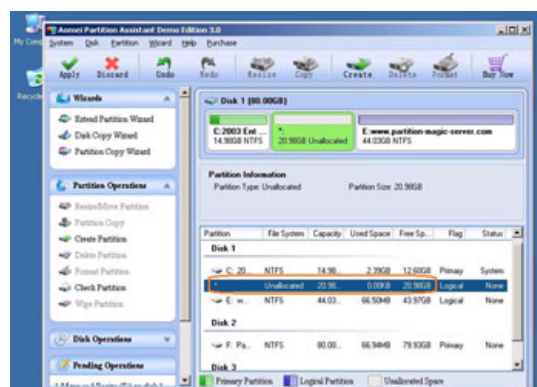
Step 1, Launch [Partition Magic Server](#), you'll see all disks and partitions that connected to your Server and free space, used space and other properties of each partition.



Right-click the data partition and select "Resize", in the pop-up window, drag the left border rightwards to shrink it.



There will be some Unallocated space behind the system partition.



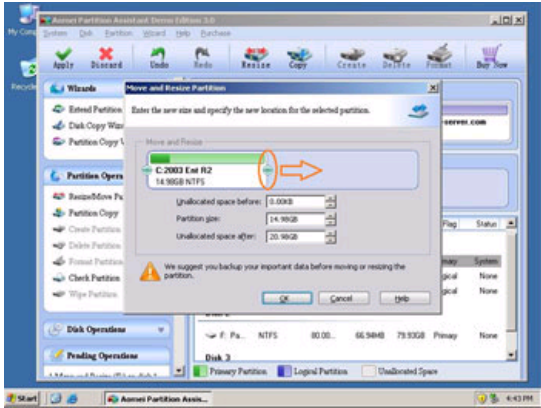
Awards



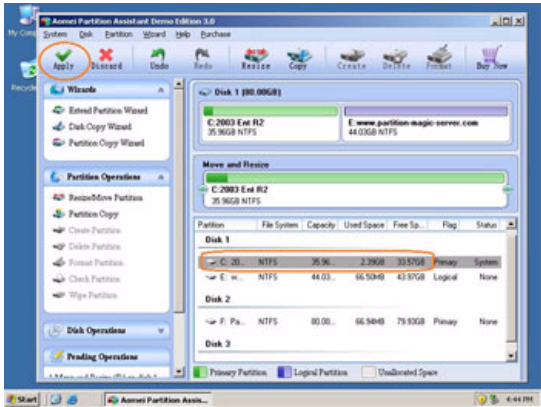
Clients Worldwide



Step 2, Right-click the system partition and select "Resize", in the pop-up window, drag the right border rightwards to hold the Unallocated space.



Click "Apply" to proceed, done.



How to allocate free space from any data partition and add to C drive?

Why this is the easiest and fastest way to resize Windows 2003 partition in VMware?


You just need to install the application, drag and move on the disk map to resize partitions. After several minutes, you'll have a "new" Server. No other operations are required.

Some professionals introduce the way to resize VMware virtual disk partition with vmkfstools or VMWare Converter, either of which is not good enough because of many disadvantages, such as:

1. Expand process is very slow
2. VMWare Tools might need to be reinstalled
3. Will create a new (many GB) copy of your VMware virtual disk and reduce the physical partition free space.
4. You need to remove copied virtual disk or change the disk slot, too difficult to many users and may lead to data loss or boot failure.

In conclusion, to a Server especially production Server, the data security and time is most important. With [Partition Assistant Server](#), you can resize Windows 2003 partition for VMware fast, easily and safely.

See [full features](#) or [download free trial](#) to check how it works.

 For enterprise users, [Unlimited Edition](#) allows unlimited usage within your company to save time and money.

Related Articles

- ▶ [How to extend C drive of Windows 2003 Server?](#)
- ▶ [How to extend system partition in Windows 2003 Server?](#)
- ▶ [How to extend SBS 2003 Server partition?](#)
- ▶ [How to resize Windows 2003 Server partition?](#)
- ▶ [Partition Manager for Windows 2003 Server](#)

Site Links:

- [Home](#)
- [Products](#)
- [Download](#)
- [Buy Now](#)
- [Resource](#)
- [Screenshot](#)
- [Support](#)
- [Sitemap](#)

- [Partition Magic Server 2003](#)
- [Partition Magic Server 2008](#)
- [Partition Magic Windows 2003](#)
- [Partition Magic Windows 2008](#)
- [Partition Magic Windows 2000](#)
- [Partition Manager Server](#)
- [Partition Manager Server 2003](#)

- [Extend System partition Windows 2003](#)
- [Extend boot partition in Server 2003](#)
- [Extend C drive in Windows 2003 Server](#)
- [Extend boot partition in Windows 2008](#)
- [Extend C drive in Windows 2008 Server](#)
- [Increase partition size in Windows 2003](#)
- [Increase partition size in Windows 2008](#)

Partition Magic Server Resources:

- [Server 2003 extend boot partition](#)
- [Resize Windows 2003 partitions](#)
- [Resize NTFS partition Windows 2003](#)
- [Server 2003 partition resize](#)
- [Server 2008 partition resize](#)
- [Extend C drive in VMware Server](#)
- [Repartition Windows 2003 Server](#)

- [Resize RAID 1 partition](#)
- [Resize RAID 5 partition](#)
- [Extend RAID 5 partition](#)
- [SBS Server low disk space](#)
- [Change partition size 2003](#)
- [Expand partition Server 2003](#)
- [Shrink Extend Server 2008](#)

[Online Customer](#)

[Service](#)

