

Home

Download

Buy Now

Products

Resource

Screenshots

Support & FAQ

Home --> Products --> Resource --> **Resize Partition** --> Resize SBS 2003 System Partition

### Product Editions

- Server Edition
- Unlimited Edition **Hot!**
- Free Lifetime Upgrade Edition
- Editions Comparison

### Main Features

- Partition Manager
- Disk & Partition Copy
- Extend Partition Wizard
- 1-click Allocate Free Space

### Navigation Links

- Free Download
- Purchase Online
- Top 10 Reasons to Try
- Awards & Reviews
- Customer Stories
- Screenshots
- Support & FAQ
- New Featured Clients

### Resource & Tutorial

- How to resize partitions
- How to merge partitions
- How to extend partition
- How to repartition disks
- Fix drive low disk space

Awards



Clients Worldwide



## How to resize SBS 2003 system partition fast, safely and easily?

### SBS 2003 system partition low disk space

No matter how big your hard drive is, you'll be amazed at how quickly application/Windows update, browser caches, restore points and temporary files can eat up your free space.

If the SBS 2003 system C drive runs out of space, Windows pops up an warning to alert computer users when their hard drive is running low on available disk space.



When Windows pop up this alert, you should fix this low disk space problem as fast as possible, as you cannot install Windows updates and other applications, system runs much slower, the worst is system crash if extremely low free space is left.

All the size of the hard disk partitions are carefully allocated while building the 2003 Server, is there a way to resize SBS 2003 system partition without losing data if C drive running low? The answer is yes, after reading this article, you'll know how easy it is to resize SBS 2003 system partition.

### Resize SBS 2003 system partition

To many Server administrators, it is not an easy task to resize SBS 2003 system partition, as Windows SBS 2003 Server doesn't provide built-in partition tool to resize partition. Considering Server data security, you have to select a reliable partition software, then which one is the best? After selecting a [Server partition software](#), you have to check out the user guide, related videos, attentions, etc. if it is too complicated.

Now, there is a full featured and awards-winning [Server partition manager - Partition Assistant Server](#), which helps you resize SBS 2003 Server partition fast, safely and easily. This full featured [partition manager Server](#) functions are brought together: [Partition Manager](#), [Disk & Partition Copy](#) and [Extend Partition Wizard](#). It allows user to [Resize](#), [Merge](#), [Shrink](#), [Extend](#) system and data partition. [Create](#), [Delete](#), [Format](#), [Copy](#), [Hide](#), [Active](#) partition, etc.

### Ensure data security when resizing SBS 2003 system partition

The security and stability are undoubtedly the most significant aspects for Server computers since a Server computer usually stores the most important classified and daily-used files. However, even a slight error on server computer might directly leads to boot failure or data loss.

[Partition Assistant Server](#) is not only reliable itself with built-in Enhanced Data Protection but also integrated with the [Disk & Partition Copy Wizard](#) to ensure 100% data security. Many Fortune 500 companies, Governments and Universities select it to maintain there Servers.

### How to resize SBS 2003 system partition

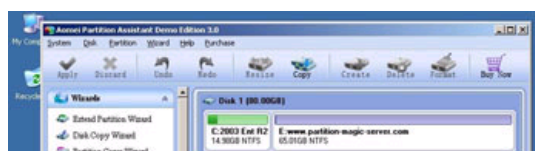
- It is extremely easy to resize SBS 2003 partition. Just drag and move on the disk map to shrink an existing data partition to get some Unallocated space, and then extend the system partition, no need to delete or reformat partitions.

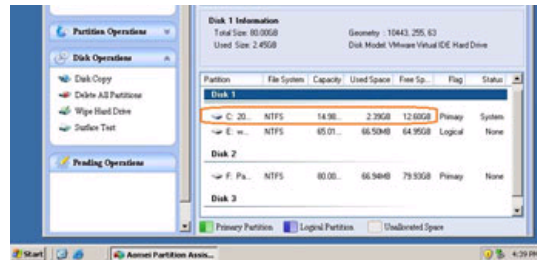
- Any operations you do on the Server will be listed in the "Operations Pending" column for you to preview.

- If your SBS 2003 system partition is NTFS, you can extend it under Windows without rebooting.

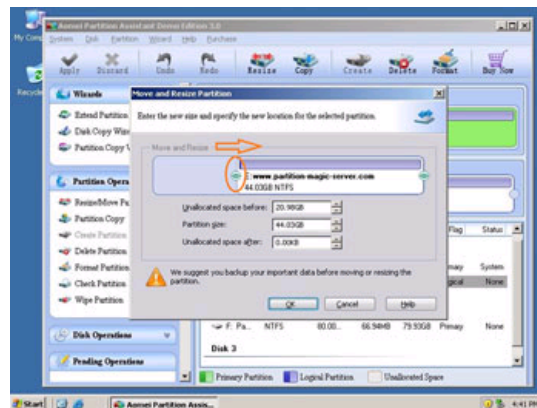
### Steps to resize SBS 2003 system partition without deleting or reformatting

Step 1, Launch [Partition Assistant Server](#), you'll see all disks and partitions that connected to your Server and free space, used space and other properties of each partition.

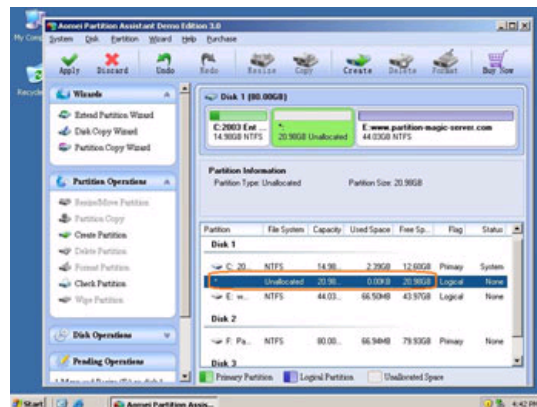




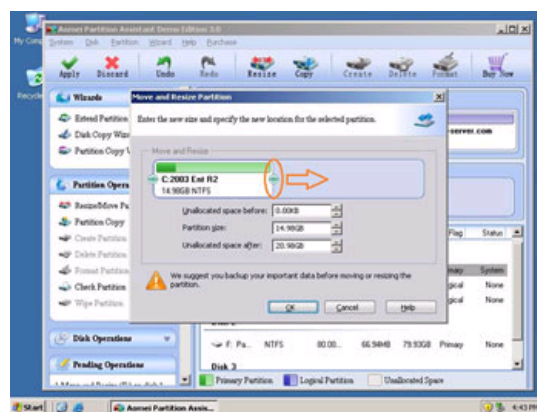
Right-click the data partition and select "Resize", in the pop-up window, drag the left border rightwards to shrink it.



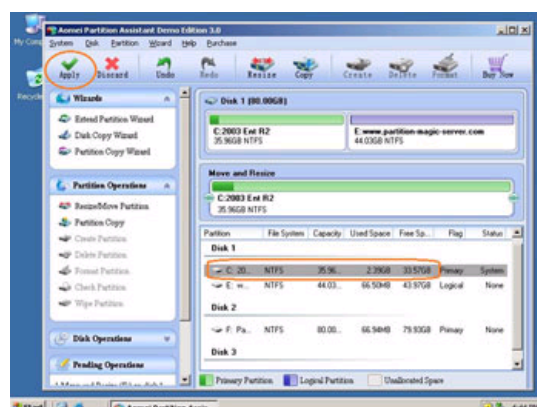
There will be some Unallocated space behind the system partition.



Step 2, Right-click the system partition and select "Resize", in the pop-up window, drag the right border rightwards to hold the Unallocated space.



Click "Apply" to proceed, done.



Now you have a "new" Server that can be used for a long time again.

[How to allocate free space from any data partition and add to C drive without losing data?](#)

## Benefits to resize SBS 2003 system partition with this Partition Magic Server

- ✔ All-in-one Partition Solution - All your partition and disk maintenance requirements can be fulfilled.
- ✔ Enhanced Data Protecting - No Data Loss
- ✔ Hot Resize - Extend NTFS system partition without rebooting
- ✔ Easy to use & user-friendly interface & working fast
- ✔ Trustworthy, many Fortune 500 companies, Governments and Universities select it to maintain their Servers
- ✔ [Read More...](#)

### Site Links:

[Home](#)  
[Products](#)  
[Download](#)  
[Buy Now](#)  
[Resource](#)  
[Screenshot](#)  
[Support](#)  
[Sitemap](#)

### Partition Magic Server Resources:

[Partition Magic Server 2003](#)  
[Partition Magic Server 2008](#)  
[Partition Magic Windows 2003](#)  
[Partition Magic Windows 2008](#)  
[Partition Magic Windows 2000](#)  
[Partition Manager Server](#)  
[Partition Manager Server 2003](#)

[Extend System partition Windows 2003](#)  
[Extend boot partition in Server 2003](#)  
[Extend C drive in Windows 2003 Server](#)  
[Extend boot partition in Windows 2008](#)  
[Extend C drive in Windows 2008 Server](#)  
[Increase partition size in Windows 2003](#)  
[Increase partition size in Windows 2008](#)

[Server 2003 extend boot partition](#)  
[Resize Windows 2003 partitions](#)  
[Resize NTFS partition Windows 2003](#)  
[Server 2003 partition resize](#)  
[Server 2008 partition resize](#)  
[Extend C drive in VMware Server](#)  
[Repartition Windows 2003 Server](#)

[Resize RAID 1 partition](#)  
[Resize RAID 5 partition](#)  
[Extend RAID 5 partition](#)  
[SBS Server low disk space](#)  
[Change partition size 2003](#)  
[Expand partition Server 2003](#)  
[Shrink Extend Server 2008](#)

[Online Customer](#)

[Service](#)

Copyright © 2008-2011 Partition Magic Server ALL RIGHTS RESERVED.  
Partition Magic ® is a registered trademark of Symantec Corporation.