

Home

Download

Buy Now

Products

Resource

Screenshots

Support & FAQ

Home --> Products --> Resource --> **Resize Partition** --> Resize Partition Windows SBS 2003

Product Editions

- Server Edition
- Unlimited Edition **Hot!**
- Free Lifetime Upgrade Edition
- Editions Comparison

Main Features

- Partition Manager
- Disk & Partition Copy
- Extend Partition Wizard
- 1-click Allocate Free Space

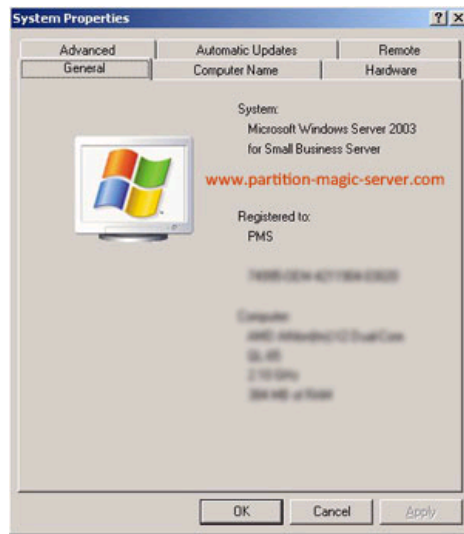
Navigation Links

- Free Download
- Purchase Online
- Top 10 Reasons to Try
- Awards & Reviews
- Customer Stories
- Screenshots
- Support & FAQ
- New Featured Clients

Resource & Tutorial

- How to resize partitions
- How to merge partitions
- How to extend partition
- How to repartition disks
- Fix drive low disk space

Resize Windows SBS 2003 Server partition fast, safely and easily.



Introduction of Windows SBS 2003

Windows Small Business Server (SBS) is an integrated server suite from Microsoft designed for running network infrastructure of small and medium enterprises. While Microsoft has always championed the small business with its line of Small Business Server (SBS) products, the company's most strident server advances in recent years have been with high-end enterprise products, and not those that serve smaller companies. That's all changing with Windows Small Business Server 2003, a product suite that improves on the simplicity and ease-of-use features from previous SBS versions, and adds a host of new functionality.

Like previous SBS versions, SBS 2003 includes everything a small business needs to get connected to the Internet, establish email, share files and printers, send and receive faxes, and so on. This time around, the product has been polished with better installation and deployment tools, simpler and more elegant management capabilities, and new features suggested by users, such as better backup and restore tools, and security-related

functionality.

Resize SBS 2003 Server partition

To many Server administrators, it is not an easy task to resize SBS 2003 partition, as the same with Windows 2003 Server, Windows SBS 2003 Server doesn't provide built-in partition tool to resize partition. Considering Server data security, you have to select a reliable partition software, then which one is the best? After selecting a [Server partition software](#), you have to check out the user guide, related videos, attentions, etc. if it is too complicated.

Now, there is a full featured and awards-winning [Server partition manager - Partition Assistant Server](#), which helps you resize SBS 2003 Server partition fast, safely and easily.

Partition Assistant Server is not only a magic Server Partition Manager but also an ALL-IN-ONE server disk management toolkit for Windows Server 2000, 2003, 2008 and Windows XP, Vista, 7 (32 and 64 bit).

It performs basic and advanced hard disk partition maintenance. This flawless hard disk management functions are brought together: [Partition Manager](#), [Disk & Partition Copy](#) and [Extend Partition Wizard](#). It allows user to [Resize](#), [Merge](#), [Shrink](#), [Extend](#) system and data partition. [Create](#), [Delete](#), [Format](#), [Copy](#), [Hide](#), [Active](#) partition, etc.

Ensure data security when resizing SBS 2003 partition

The security and stability are undoubtedly the most significant aspects for Server computers since a Server computer usually stores the most important classified and daily-used files. However, even a slight error on server computer might directly leads to boot failure or data loss.

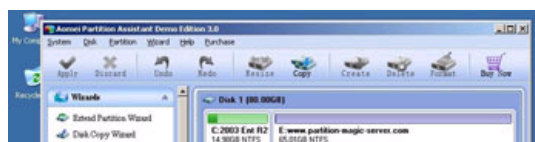
[Partition Assistant Server](#) is not only reliable itself with built-in Enhanced Data Protection but also integrated with the [Disk & Partition Copy Wizard](#) to ensure 100% data security. Many Fortune 500 companies, Governments and Universities select it to maintain there Servers.

How to resize SBS 2003 Server partition

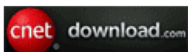
- It is extremely easy to resize SBS 2003 partition. You just need to drag and move on the disk map to shrink an existing data partition to get some Unallocated space, and then extend the system partition, no need to delete or reformat partitions.
- Any operations you do on the Server will be listed in the "Operations Pending" column for you to preview.
- If your SBS 2003 Server system partition is NTFS, you can extend it under Windows without rebooting.

Steps to resize SBS 2003 partition without deleting or formatting

Step 1, Launch [Partition Assistant Server](#), you'll see all disks and partitions that connected to your Server and free space, used space and other properties of each partition.

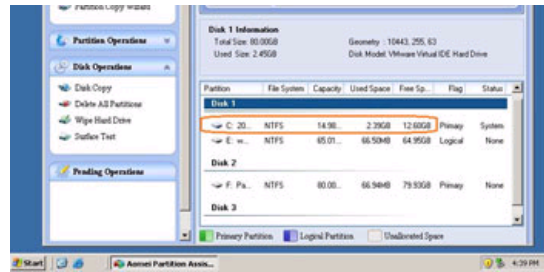


Awards

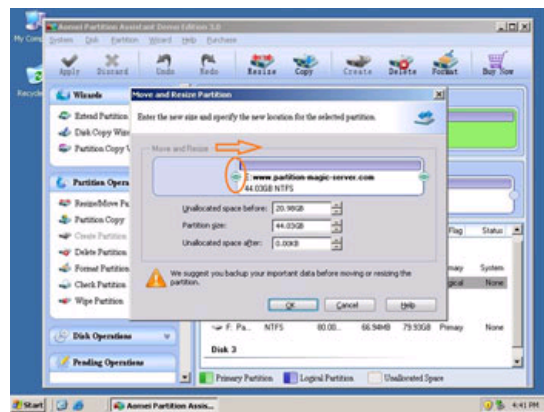


Clients Worldwide

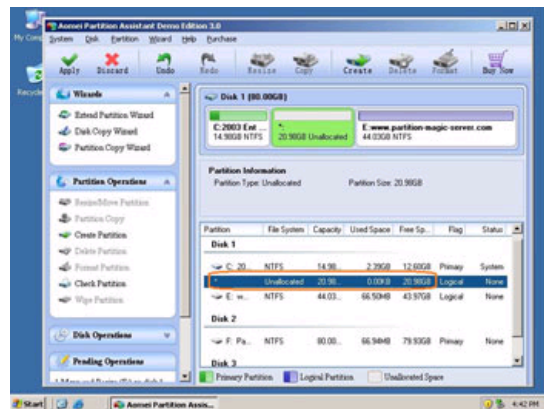




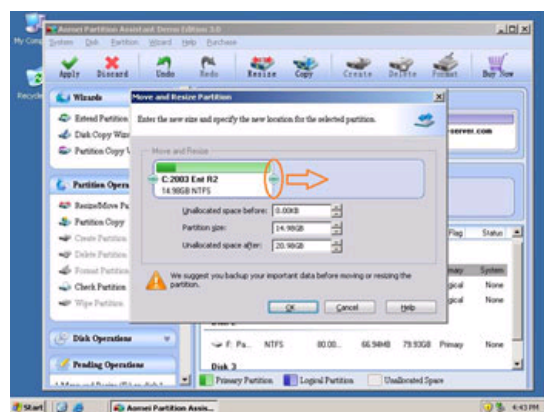
Right-click the data partition and select "Resize", in the pop-up window, drag the left border rightwards to shrink it.



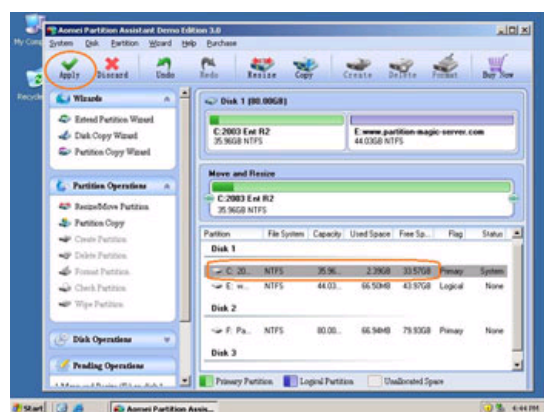
There will be some Unallocated space behind the system partition.



Step 2, Right-click the system partition and select "Resize", in the pop-up window, drag the right border rightwards to hold the Unallocated space.



Click "Apply" to proceed, done.



Now you have a "new" Server that can be used for a long time again.



For enterprise users, [Unlimited Edition](#) allows unlimited usage within your company to save time and money.

Benefits to resize SBS 2003 Server partition with this Partition Magic Server

- ✔ All-in-one Partition Solution - All your partition and disk maintenance requirements can be fulfilled.
- ✔ Enhanced Data Protecting - No Data Loss
- ✔ Hot Resize - Extend NTFS system partition without rebooting
- ✔ Easy to use & user-friendly interface & working fast
- ✔ Trustworthy, many Fortune 500 companies, Governments and Universities select it to maintain their Servers
- ✔ [Read More...](#)

Site Links:

[Home](#)
[Products](#)
[Download](#)
[Buy Now](#)

[Resource](#)
[Screenshot](#)
[Support](#)
[Sitemap](#)

Partition Magic Server Resources:

[Partition Magic Server 2003](#)
[Partition Magic Server 2008](#)
[Partition Magic Windows 2003](#)
[Partition Magic Windows 2008](#)
[Partition Magic Windows 2000](#)
[Partition Manager Server](#)
[Partition Manager Server 2003](#)

[Extend System partition Windows 2003](#)
[Extend boot partition in Server 2003](#)
[Extend C drive in Windows 2003 Server](#)
[Extend boot partition in Windows 2008](#)
[Extend C drive in Windows 2008 Server](#)
[Increase partition size in Windows 2003](#)
[Increase partition size in Windows 2008](#)

[Server 2003 extend boot partition](#)
[Resize Windows 2003 partitions](#)
[Resize NTFS partition Windows 2003](#)
[Server 2003 partition resize](#)
[Server 2008 partition resize](#)
[Extend C drive in VMware Server](#)
[Repartition Windows 2003 Server](#)

[Resize RAID 1 partition](#)
[Resize RAID 5 partition](#)
[Extend RAID 5 partition](#)
[SBS Server low disk space](#)
[Change partition size 2003](#)
[Expand partition Server 2003](#)
[Shrink Extend Server 2008](#)

[Online Customer](#)

[Service](#)

Copyright © 2008-2011 Partition Magic Server ALL RIGHTS RESERVED.

Partition Magic ® is a registered trademark of Symantec Corporation.