

Home

Download

Buy Now

Products

Resource

Screenshots

Support & FAQ

Home --> Products --> Resource --> Resize Partition --> Resize C Drive Windows 2003 Server

### Product Editions

- Server Edition
- Unlimited Edition **Hot!**
- Free Lifetime Upgrade Edition
- Editions Comparison

### Main Features

- Partition Manager
- Disk & Partition Copy
- Extend Partition Wizard
- 1-click Allocate Free Space

### Navigation Links

- Free Download
- Purchase Online
- Top 10 Reasons to Try
- Awards & Reviews
- Customer Stories
- Screenshots
- Support & FAQ
- New Featured Clients

### Resource & Tutorial

- How to resize partitions
- How to merge partitions
- How to extend partition
- How to repartition disks
- Fix drive low disk space

### How to resize Windows 2003 Server C drive without losing data?

More and more Windows updates and applications installed to the system C drive, when C: drive running out of space, the Server computer will be fighting for the precious space and will run much slowly. System may crash if there is no free space.

What will you do in this situation? No one would like to waste the happy weekend to start over. It may also lead to data loss when rebuilding the Server.

The time-saving and easiest way is to resize Windows 2003 Server C drive with reliable [Server 2003 partition software](#). That is to say, shrink other data partition and get some free space and then [extend the system C drive](#) with the Unallocated space, so there is no need to start over again to save time.

### Ensure data security when resizing C drive on Windows 2003 Server

The security and stability are undoubtedly the most significant aspect for Server computers since a Server computer usually stores the most important classified and daily-used files. However, even a slight error on Server computer might directly leads to exposure of the whole network to the outside. So you must select the right partition software to resize C drive on your Windows 2003 Server.

With the unique Enhanced Data Protection technology and Disk/Partition Copy Wizard built-in [Partition Assistant Server](#), you don't need to worry about the data security when resizing your Server disk partitions.

### How to resize Windows 2003 C drive

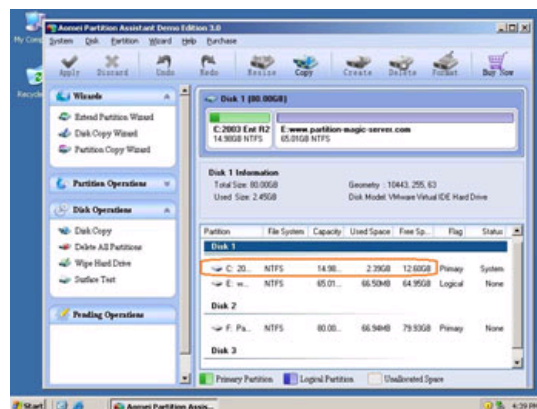
- It is extremely easy to resize C drive in Windows 2003 Server. You just need to drag and move on the disk map to shrink an existing data partition to get some Unallocated space, and then you can extend C drive with this space. There is no need to delete, format partitions or rebuild the Server.

- Any operations you do on the Server will be listed in the "Operations Pending" column and no changes will take place on your partitions before you click "Apply".

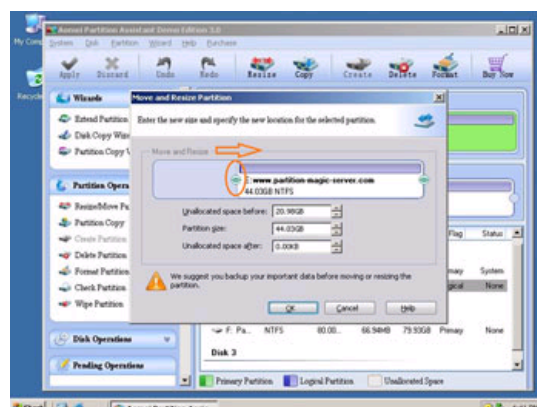
- If the system C drive is NTFS, you can extend it without rebooting Server.

### Step by step tutorial to resize Server 2003 C drive

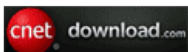
Step 1, Launch [Partition Assistant Server](#), you'll see all disks and partitions that connected to your Server and free space, used space and other properties of each partition.



Right-click the data partition and select "Resize", in the pop-up window, drag the left border rightwards to shrink it.



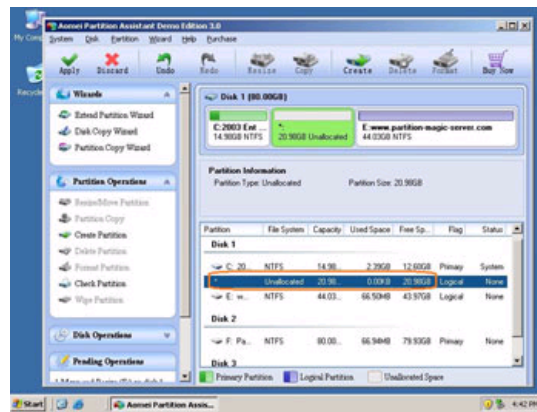
Awards



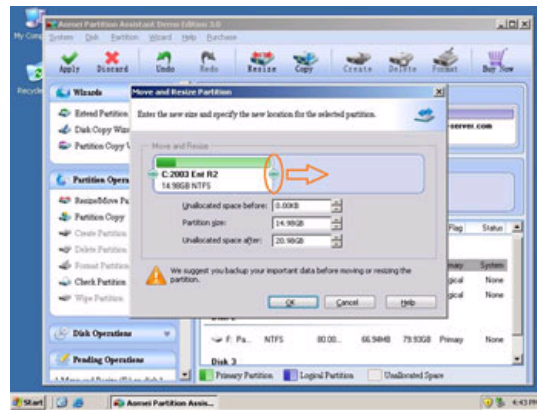
Clients Worldwide



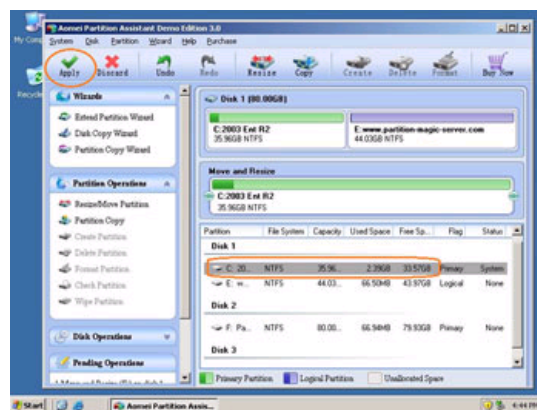
There will be some Unallocated space behind the system partition.



Step 2, Right-click the system partition and select "Resize", in the pop-up window, drag the right border rightwards to hold the Unallocated space.



Click "Apply" to proceed, done.



Now you have a "new" Server that can be used for a long time again.

[How to allocate free space from any data partition and add to C drive without losing data?](#)

 For enterprise users, [Unlimited Edition](#) allows unlimited usage within your company to save time and money.

#### Site Links:

[Home](#)  
[Products](#)  
[Download](#)  
[Buy Now](#)

[Resource](#)  
[Screenshot](#)  
[Support](#)  
[Sitemap](#)

[Partition Magic Server 2003](#)  
[Partition Magic Server 2008](#)  
[Partition Magic Windows 2003](#)  
[Partition Magic Windows 2008](#)  
[Partition Magic Windows 2000](#)  
[Partition Manager Server](#)  
[Partition Manager Server 2003](#)

[Extend System partition Windows 2003](#)  
[Extend boot partition in Server 2003](#)  
[Extend C drive in Windows 2003 Server](#)  
[Extend boot partition in Windows 2008](#)  
[Extend C drive in Windows 2008 Server](#)  
[Increase partition size in Windows 2003](#)  
[Increase partition size in Windows 2008](#)

#### Partition Magic Server Resources:

[Server 2003 extend boot partition](#)  
[Resize Windows 2003 partitions](#)  
[Resize NTFS partition Windows 2003](#)  
[Server 2003 partition resize](#)  
[Server 2008 partition resize](#)  
[Extend C drive in VMware Server](#)  
[Repartition Windows 2003 Server](#)

[Resize RAID 1 partition](#)  
[Resize RAID 5 partition](#)  
[Extend RAID 5 partition](#)  
[SBS Server low disk space](#)  
[Change partition size 2003](#)  
[Expand partition Server 2003](#)  
[Shrink Extend Server 2008](#)

[Online Customer](#)

[Service](#)