

Home

Download

Buy Now

Products

Resource

Screenshots

Support & FAQ

Home --> Products --> Resource --> Repartition --> Repartition 2003

### Product Editions

- Server Edition
- Unlimited Edition **Hot!**
- Free Lifetime Upgrade Edition
- Editions Comparison

### Main Features

- Partition Manager
- Disk & Partition Copy
- Extend Partition Wizard
- 1-click Allocate Free Space

### Navigation Links

- Free Download
- Purchase Online
- Top 10 Reasons to Try
- Awards & Reviews
- Customer Stories
- Screenshots
- Support & FAQ
- New Featured Clients

### Resource & Tutorial

- How to resize partitions
- How to merge partitions
- How to extend partition
- How to repartition disks
- Fix drive low disk space

## How to repartition 2003 Server hard drive without losing data?

First of all, let's see a typical question on the forum:

" I have a client who has a Windows 2003 server. They had set it up with a small C: drive and the bigger D: drive for data. Now we are fighting windows for control of the last 100 MB. It won't do windows updates.

Will any of the repartitioning tools handle this? "

The answer is, yes, [Partition Magic Server](#) is able to repartition 2003 Server drive without deleting or reformatting.

All the size of partitions on Windows 2003 Server are carefully allocated while building the Server. However, things are changing and the scheduled size may not always meet your needs, especially for the System partition, as Windows continues to download large updates or some reasons. Application installation, browser caches, Windows system backup and temporary files can eat up your free space and clutter your system quickly.

### How to repartition 2003 Server drives?

Formerly, you have to backup system and files, delete all partitions, recreate larger partitions and then restore, what a time-consuming work.

Under Windows Server 2003 Disk Management, you can create, format partitions, but you cannot repartition 2003 drives when it is running low.

Now, with Partition Magic Server software, you can repartition 2003 Server fast, safely and easily. With the absolutely user-friendly interface, the functions are easy to get access to, you just need to drag and move on the disk map to repartition.

### Pay attention to data security when repartitioning 2003 Server

Repartition Windows Server 2003 is not an easy job for Windows Server users because it is involved with the data safety on the Server partitions. So, they need to think twice to choose reliable [Server partition software](#) to repartition 2003 Server drives. No one wants to see data loss or boot failure after repartitioning.

[Partition Magic Server](#) is not only reliable itself, but also integrated [disk and partition copy](#) to backup your data. It is also able to extend NTFS system partition without rebooting to save time.

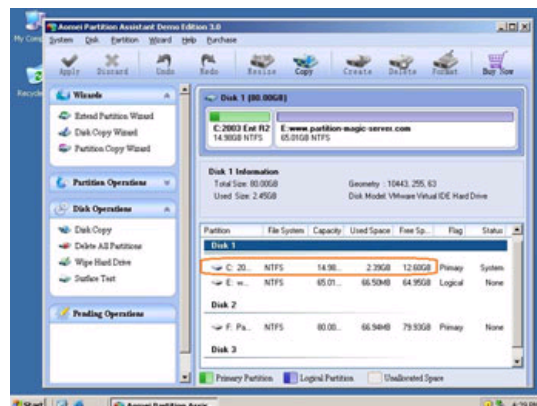
### Steps to repartition 2003 Server and extend the system partition

Partition Magic Server provides 3 ways to repartition drives.

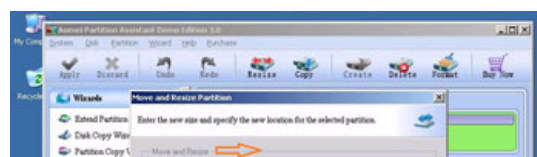
1. [Resize/Move](#) - Shrink a data partition to get some free space and then extend the system partition.
2. [Extend Partition Wizard](#) - Shrink one or all data partitions and extend the system drive with step by step guide.
3. [Allocate Free Space](#) - One step to shrink a specified data partition and extend the system drive.

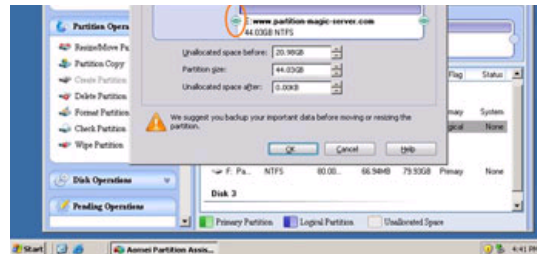
### Steps to repartition with Resize/Move feature

Step 1, Launch Partition Magic Server, you'll see all disks and partitions that connected to your Server, free space, used space and other properties of each partition.

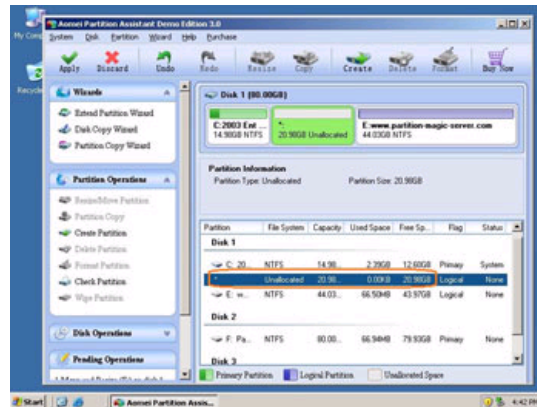


Right-click the data partition and select "Resize", in the pop-up window, drag the left border rightwards to shrink it.

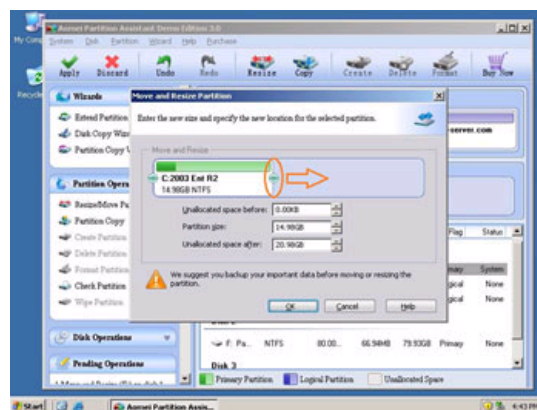




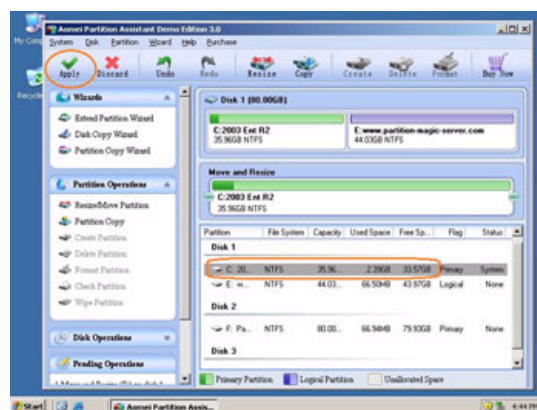
There will be some Unallocated space behind the system partition.



Step 2, Right-click the system partition and select "Resize", in the pop-up window, drag the right border rightwards to hold the Unallocated space.



Click "Apply" to proceed, done.



Now you have a "new" Server that can be used for a long time again.

Partition Magic Server is not only a partition resizing tool, but also a reliable disk partition manager for Windows Server 2000, 2003, 2008, Small Business Server 2003, 2008, 2011 and Windows XP, Vista, 7 (32 and 64 bit).

It performs basic and advanced hard disk partition maintenance. The functions are brought together: [Partition Manager](#), [Disk & Partition Copy](#) and [Extend Partition Wizard](#). It allows user to [Resize](#), [Merge](#), [Shrink](#), [Extend](#) system and data partition. [Create](#), [Delete](#), [Format](#), [Copy](#), [Hide](#), [Active](#) partition and much more.

 For enterprise users, [Unlimited Edition](#) allows unlimited usage within your company to save time and money.

## Related Articles

- ▶ [Partition Magic Windows 2003 Server](#)
- ▶ [Windows 2003 Server partition manager](#)
- ▶ [How to extend system C drive in Windows 2003 Server?](#)
- ▶ [How to resize NTFS partition for Windows 2003 Server?](#)
- ▶ [How to resize RAID 1 partition?](#)

#### Site Links:

<a href="#">Home</a>	<a href="#">Resource</a>
<a href="#">Products</a>	<a href="#">Screenshot</a>
<a href="#">Download</a>	<a href="#">Support</a>
<a href="#">Buy Now</a>	<a href="#">Sitemap</a>

#### Partition Magic Server Resources:

<a href="#">Partition Magic Server 2003</a>	<a href="#">Extend System partition Windows 2003</a>	<a href="#">Server 2003 extend boot partition</a>	<a href="#">Resize RAID 1 partition</a>	<a href="#">Online Customer</a>
<a href="#">Partition Magic Server 2008</a>	<a href="#">Extend boot partition in Server 2003</a>	<a href="#">Resize Windows 2003 partitions</a>	<a href="#">Resize RAID 5 partition</a>	
<a href="#">Partition Magic Windows 2003</a>	<a href="#">Extend C drive in Windows 2003 Server</a>	<a href="#">Resize NTFS partition Windows 2003</a>	<a href="#">Extend RAID 5 partition</a>	<a href="#">Service</a>
<a href="#">Partition Magic Windows 2008</a>	<a href="#">Extend boot partition in Windows 2008</a>	<a href="#">Server 2003 partition resize</a>	<a href="#">SBS Server low disk space</a>	
<a href="#">Partition Magic Windows 2000</a>	<a href="#">Extend C drive in Windows 2008 Server</a>	<a href="#">Server 2008 partition resize</a>	<a href="#">Change partition size 2003</a>	
<a href="#">Partition Manager Server</a>	<a href="#">Increase partition size in Windows 2003</a>	<a href="#">Extend C drive in VMware Server</a>	<a href="#">Expand partition Server 2003</a>	
<a href="#">Partition Manager Server 2003</a>	<a href="#">Increase partition size in Windows 2008</a>	<a href="#">Repartition Windows 2003 Server</a>	<a href="#">Shrink Extend Server 2008</a>	

Copyright © 2008-2011 Partition Magic Server ALL RIGHTS RESERVED.

Partition Magic ® is a registered trademark of Symantec Corporation.