

Home

Download

Buy Now

Products

Resource

Screenshots

Support & FAQ

Home --> Products --> Resource --> Partition Manager --> Partition Manager Server 2003

Product Editions

- Server Edition
- Unlimited Edition **Hot!**
- Free Lifetime Upgrade Edition
- Editions Comparison

Main Features

- Partition Manager
- Disk & Partition Copy
- Extend Partition Wizard
- 1-click Allocate Free Space

Navigation Links

- Free Download
- Purchase Online
- Top 10 Reasons to Try
- Awards & Reviews
- Customer Stories
- Screenshots
- Support & FAQ
- New Featured Clients

Resource & Tutorial

- How to resize partitions
- How to merge partitions
- How to extend partition
- How to repartition disks
- Fix drive low disk space

Partition Manager Server for Windows Server 2003/2008/2000 32 and 64 bit.

Looking for Partition Manager Server that works on Windows 2003 Server? In this article, I'll introduce the widely-used Server 2003 partition Manager.

What does Windows Server 2003 partition Manager do?

Generally speaking, you need Server 2003 partition Manager to optimize the usage of your Windows server hard disk space. A typical example is that the [system C drive running out of space](#), so you need to merge, resize or extend your Server partitions without losing data to fix this problem.

With the advanced features of Windows Server 2003 partition Manager, you can maximize the Server's performance, for example, [Create, Format, Delete, Copy, Wipe, Hide, set Active partition](#) etc.

Partition Manager Server 2003

[Partition Magic Server Edition](#) is a magic ALL-IN-ONE server disk management toolkit for Windows Server 2000, 2003, 2008 both 32 and 64 bit. It performs basic and advanced hard disk partition maintenance, for example, [resize, merge](#), shrink, extend system or data partition without losing data, etc. It also provides data protection and disaster recovery. The Server 2003 Partition Manager functions are brought together: [Partition Manager](#), [Disk & Partition Copy](#) and [Extend Partition Wizard](#).

The unique and most important features of this Server 2003 Partition Manager:

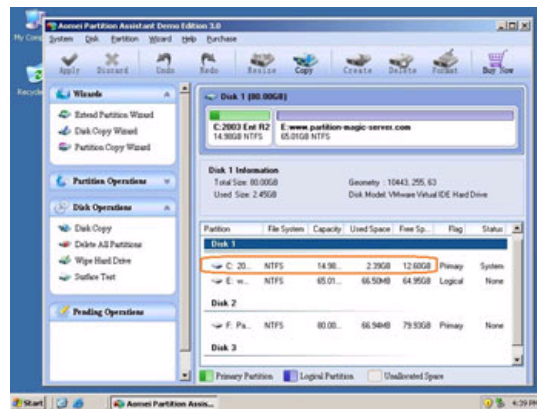
Enhanced Data Protection technology, with which you can merge, resize partition without data loss even when power off or hardware problem occurs.

With its **Hot Resize** feature, you can extend NTFS system partition without reboot to avoid Server downtime.

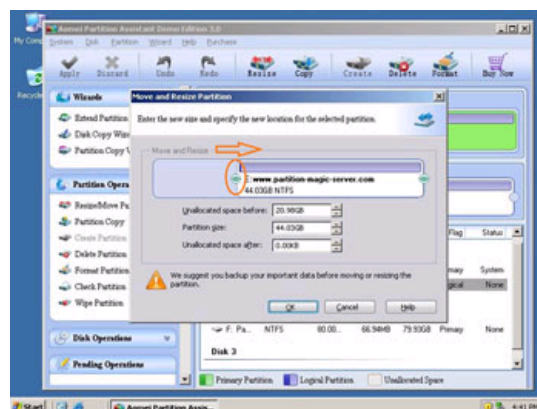
Due to its security, stability, easy to use, fully functional and cost-effective, [Partition Magic Server](#) is recommended as the Best Partition Manager for Windows 2003/2008 Server by many professionals and editors.

How to repartition 2003 Server with this partition manager

Step 1, Launch [Partition Magic Server](#), you'll see all disks and partitions that connected to your Server and free space, used space and other properties of each partition.

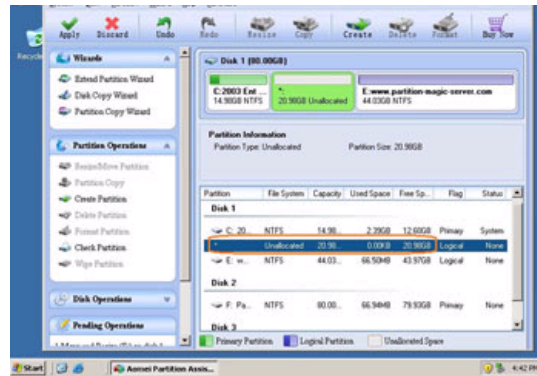


Right-click the data partition and select "Resize", in the pop-up window, drag the left border rightwards to shrink it.

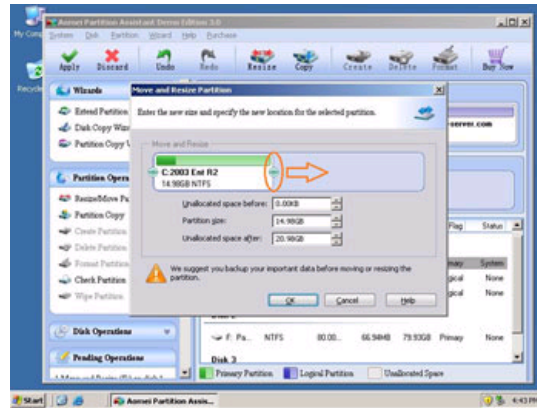


There will be some Unallocated space behind the system partition.

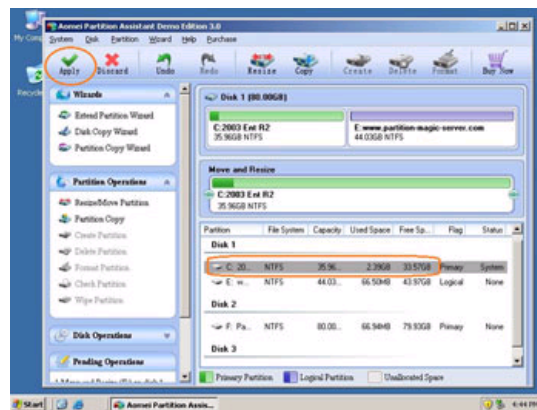




Step 2, Right-click the system partition and select "Resize", in the pop-up window, drag the right border rightwards to hold the Unallocated space.



Click "Apply" to proceed, done.



Now you have a "new" Server that can be used for a long time again.

[How to allocate free space from any data partition and add to C drive?](#)

Other benefits of Windows Server 2003 Partition Manager

- ✓ Changes made on partitions can be previewed before applying to the hard disk to avoid incorrect operations.
- ✓ Easy to use, just dragging and drawing on the disk map to resize, merge partitions.
- ✓ Trusted product, many Fortune 500 companies select it to maintain their Servers.
- ✓ 30-day Money Back Guarantee.
- ✓ **Free lifetime** Technical support and after-sale service & Fast Live Support.
- ✓ [full features and benefits...](#)

Special Partition Manager for Windows 2003/2008 Server

For enterprise users, [Unlimited Edition](#) allow unlimited usage within your company to save time and money.

[Download free trial](#) of these Windows Server partition manager and check how they work for you.

Site Links:

[Home](#)
[Products](#)
[Download](#)
[Buy Now](#)

[Resource](#)
[Screenshot](#)
[Support](#)
[Sitemap](#)

[Partition Magic Server 2003](#)
[Partition Magic Server 2008](#)
[Partition Magic Windows 2003](#)
[Partition Magic Windows 2008](#)
[Partition Magic Windows 2000](#)
[Partition Manager Server](#)
[Partition Manager Server 2003](#)

[Extend System partition Windows 2003](#)
[Extend boot partition in Server 2003](#)
[Extend C drive in Windows 2003 Server](#)
[Extend boot partition in Windows 2008](#)
[Extend C drive in Windows 2008 Server](#)
[Increase partition size in Windows 2003](#)
[Increase partition size in Windows 2008](#)

[Server 2003 extend boot partition](#)
[Resize Windows 2003 partitions](#)
[Resize NTFS partition Windows 2003](#)
[Server 2003 partition resize](#)
[Server 2008 partition resize](#)
[Extend C drive in VMware Server](#)
[Repartition Windows 2003 Server](#)

[Resize RAID 1 partition](#)
[Resize RAID 5 partition](#)
[Extend RAID 5 partition](#)
[SBS Server low disk space](#)
[Change partition size 2003](#)
[Expand partition Server 2003](#)
[Shrink Extend Server 2008](#)

[Online Customer](#)

[Service](#)

