

Home

Download

Buy Now

Products

Resource

Screenshots

Support & FAQ

Home --> Products --> Resource --> Partition Magic --> Partition Magic SBS 2003

Product Editions

- Server Edition
- Unlimited Edition **Hot!**
- Free Lifetime Upgrade Edition
- Editions Comparison

Main Features

- Partition Manager
- Disk & Partition Copy
- Extend Partition Wizard
- 1-click Allocate Free Space

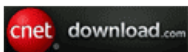
Navigation Links

- Free Download
- Purchase Online
- Top 10 Reasons to Try
- Awards & Reviews
- Customer Stories
- Screenshots
- Support & FAQ
- New Featured Clients

Resource & Tutorial

- How to resize partitions
- How to merge partitions
- How to extend partition
- How to repartition disks
- Fix drive low disk space

Awards



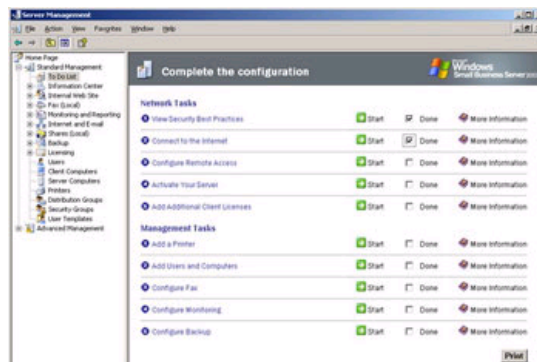
Clients Worldwide



Partition Magic Server for SBS 2003 to extend partition fast and safely.

Short introduction about SBS 2003

Windows Small Business Server (SBS) (formerly Microsoft Small Business Server) is an integrated server suite from Microsoft designed for running network infrastructure (both intranet management and Internet access) of small and medium enterprises having no more than 75 workstations or users. Application server technologies are tightly integrated to enable small businesses with targeted solutions such as the Remote Web Workplace, and offer management benefits such as integrated setup, enhanced monitoring, a unified management console, and remote access.



Low disk space on SBS 2003

After running SBS 2003 for a period, the system C drive runs out of space and the low disk space alert like below pops up, which means that there is low free space and you need to extend the system partition. If there is no free space, the system runs much slower immediately and you cannot install updates and any other applications.



Windows provides Cleanup utility to delete some files and get some free space, but in most cases, this utility is useless, as it can only free up a little free space and low disk space alert will pops up shortly. You need to extend the system partition with some tools, like Partition Magic.

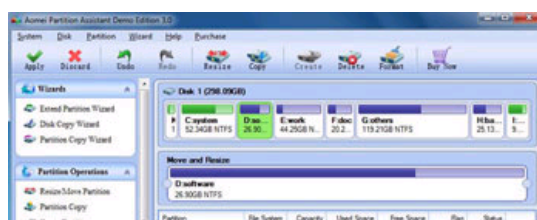
Can I use Partition Magic on SBS 2003?

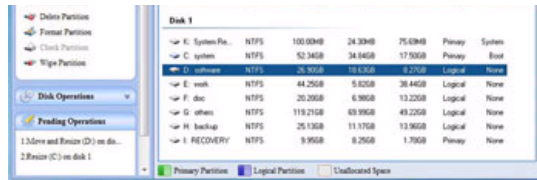
Partition Magic is considered to be the most popular partition software, but Partition Magic doesn't support Windows Server. There is Partition Magic Server edition - Server Magic, but since being acquired by Symantec, Server Magic has not been upgraded. So it is not possible for Server Magic to extend, resize server partition under any advanced Operating System, such as Windows 2003, 2008, etc.

Extend SBS 2003 partition with Partition Magic Server

Partition Assistant Server is an ALL-IN-ONE server disk management toolkit for Windows Server 2000, 2003, 2008 and Windows XP, Vista, 7 (32 and 64 bit).

It performs basic and advanced hard disk partition maintenance. This flawless hard disk management functions are brought together: Partition Manager, Disk & Partition Copy and Extend Partition Wizard. It allows user to Resize, Merge, Split, Extend system and data partition. Create, Delete, Format, Copy partition, etc.

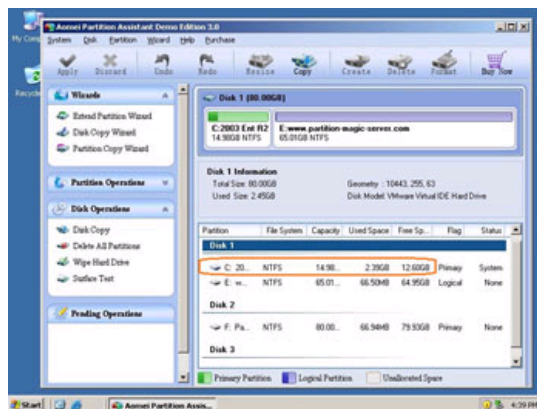




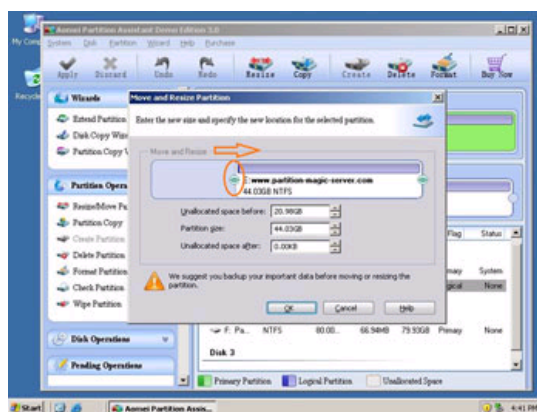
Based on the unique enhanced data protection technology and [Copy Wizard](#) built in [Partition Assistant Server](#), you don't need to worry about the data safety. Our [Server partition manager](#) is highly recommended by many professionals and editors, besides, many Fortune 500 companies select it to manage their Servers.

How to extend SBS 2003 system partition without data loss

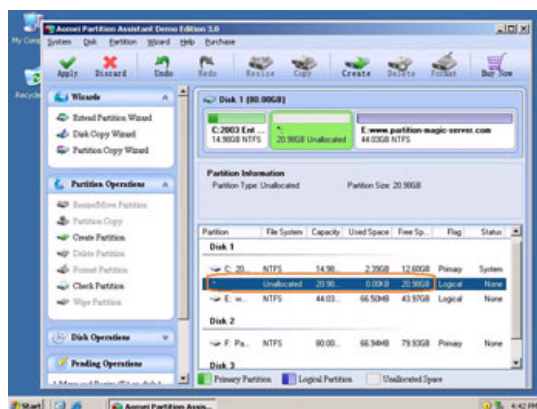
Step 1, Launch [Partition Magic Server](#), you'll see all disks and partitions that connected to your Server and free space, used space and other properties of each partition.



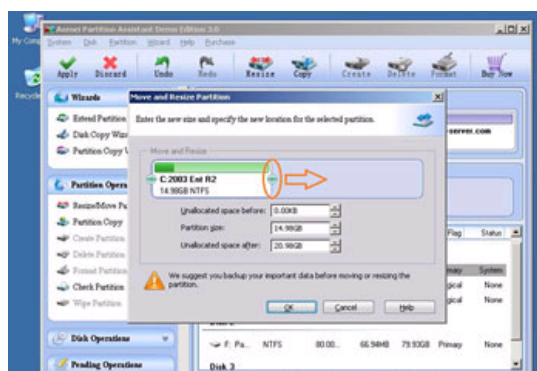
Right-click the data partition and select "Resize", in the pop-up window, drag the left border rightwards to shrink it.



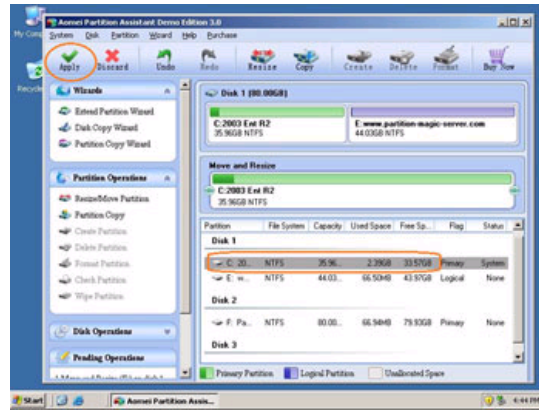
There will be some Unallocated space behind the system partition.



Step 2, Right-click the system partition and select "Resize", in the pop-up window, drag the right border rightwards to hold the Unallocated space.



Click "Apply" to proceed, done.



Now you have a "new" Server that can be used for a long time again.

How to allocate free space from any data partition and add to C drive?

For enterprise users, [Unlimited Edition](#) allows unlimited usage within your company to save time and money.

Related Articles

- ▶ [How to extend SBS 2003 Server partition?](#)
- ▶ [How to resize SBS 2003 system partition?](#)
- ▶ [How to resize SBS 2003 partition without data loss?](#)
- ▶ [How to resize Windows 2003 NTFS partition?](#)
- ▶ [How to solve Server 2003 low disk space problem?](#)
- ▶ [How to shrink and extend RAID array virtual drives?](#)
- ▶ [How to extend VMware C drive?](#)

Site Links:

[Home](#)
[Products](#)
[Download](#)
[Buy Now](#)

[Resource](#)
[Screenshot](#)
[Support](#)
[Sitemap](#)

[Partition Magic Server 2003](#)
[Partition Magic Server 2008](#)
[Partition Magic Windows 2003](#)
[Partition Magic Windows 2008](#)
[Partition Magic Windows 2000](#)
[Partition Manager Server](#)
[Partition Manager Server 2003](#)

[Extend System partition Windows 2003](#)
[Extend boot partition in Server 2003](#)
[Extend C drive in Windows 2003 Server](#)
[Extend boot partition in Windows 2008](#)
[Extend C drive in Windows 2008 Server](#)
[Increase partition size in Windows 2003](#)
[Increase partition size in Windows 2008](#)

Partition Magic Server Resources:

[Server 2003 extend boot partition](#)
[Resize Windows 2003 partitions](#)
[Resize NTFS partition Windows 2003](#)
[Server 2003 partition resize](#)
[Server 2008 partition resize](#)
[Extend C drive in VMware Server](#)
[Repartition Windows 2003 Server](#)

[Resize RAID 1 partition](#)
[Resize RAID 5 partition](#)
[Extend RAID 5 partition](#)
[SBS Server low disk space](#)
[Change partition size 2003](#)
[Expand partition Server 2003](#)
[Shrink Extend Server 2008](#)

Copyright © 2008-2011 Partition Magic Server ALL RIGHTS RESERVED.
Partition Magic ® is a registered trademark of Symantec Corporation.

[Online Customer Service](#)