

Home

Download

Buy Now

Products

Resource

Screenshots

Support & FAQ

Home --> Products --> Resource --> Extend Partition --> How to extend partition in Windows Server 2003

Product Editions

- Server Edition
- Unlimited Edition **Hot!**
- Free Lifetime Upgrade Edition
- Editions Comparison

Main Features

- Partition Manager
- Disk & Partition Copy
- Extend Partition Wizard
- 1-click Allocate Free Space

Navigation Links

- Free Download
- Purchase Online
- Top 10 Reasons to Try
- Awards & Reviews
- Customer Stories
- Screenshots
- Support & FAQ
- New Featured Clients

Resource & Tutorial

- How to resize partitions
- How to merge partitions
- How to extend partition
- How to repartition disks
- Fix drive low disk space

How to extend partition in Windows 2003 Server without losing data?

After running Windows 2003 Server for a period, you may find that the Server 2003 system C drive running out of space and "Low Disk Space" warning pops up regularly.



Why Windows 2003 running out of space?

To meet the needs of Server maintenance, administrators have to install many applications, meanwhile, browser caches, temporary files and restore points of Windows system protection can eat up your free space quickly.

What will you do if system C drive running low, rebuild the Server? No one wants to waste the whole happy weekend to start over again. Furthermore, there is big risk of losing data when reinstalling Server Operating System.

Then how to solve this problem fast and safely? [Partition Magic Server](#) is the best choice, with which you can extend partition in Windows Server 2003 without reformatting or losing data.

How to extend partition in Windows 2003 Server?

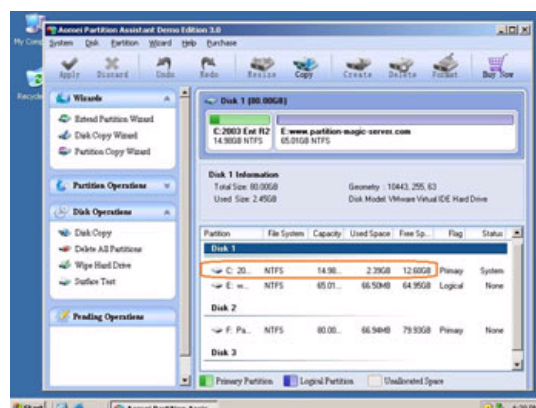
Originally, to extend a partition, you have to backup system and files, delete the partitions, create larger partition and then restore, what a time-consuming work. With Partition Magic Server, you can [extend system partition in Windows Server 2003](#) directly.

You just need to drag and move on the disk map to shrink an existing data partition and get some Unallocated space to extend the system C drive, there is no need to delete, format partition or rebuild the Server.

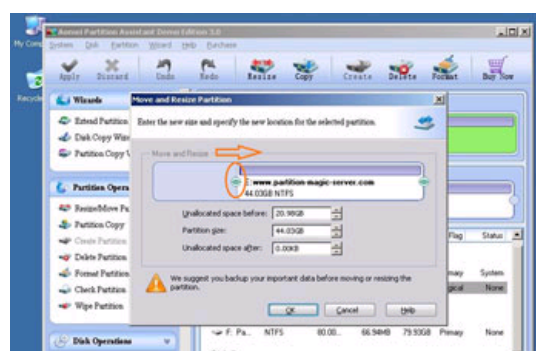
All operations can be previewed and cancelled to avoid incorrect operations. You can even [extend Server 2003 C drive](#) without reboot if it is NTFS.

Steps to extend partition in Windows Server 2003 without reformatting

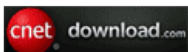
Step 1, Launch [Partition Magic Server](#), you'll see all disks and partitions that connected to your Server and free space, used space and other properties of each partition.



Right-click the data partition and select "Resize", in the pop-up window, drag the left border rightwards to shrink it.

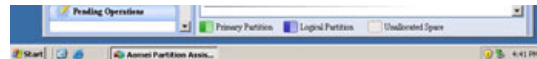


Awards

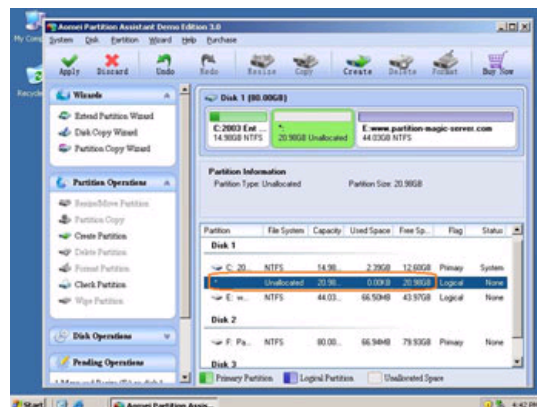


Clients Worldwide

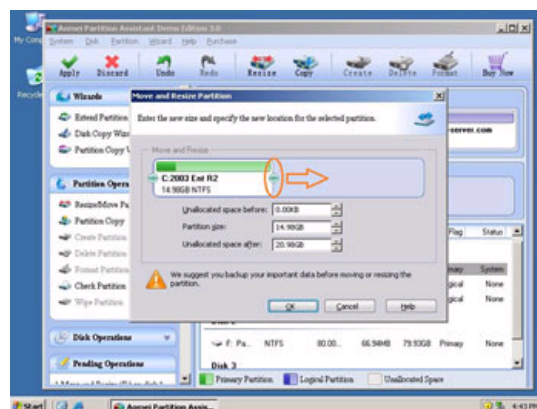




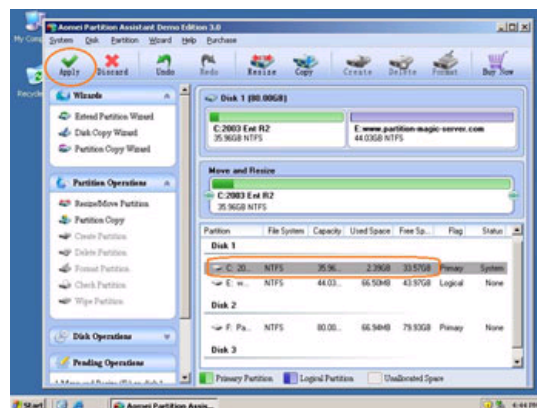
There will be some Unallocated space behind the system partition.



Step 2, Right-click the system partition and select "Resize", in the pop-up window, drag the right border rightwards to hold the Unallocated space.



Click "Apply" to proceed, done.



After several minutes, you'll have a "new" Server that can be used for a long time again.

How to allocate free space from any data partition and add to C drive?

For enterprise users, [Unlimited Edition](#) allows unlimited usage within your company to save time and money.

Site Links:

[Home](#)
[Products](#)
[Download](#)
[Buy Now](#)

[Resource](#)
[Screenshot](#)
[Support](#)
[Sitemap](#)

[Partition Magic Server 2003](#)
[Partition Magic Server 2008](#)
[Partition Magic Windows 2003](#)
[Partition Magic Windows 2008](#)
[Partition Magic Windows 2000](#)
[Partition Manager Server](#)
[Partition Manager Server 2003](#)

[Extend System partition Windows 2003](#)
[Extend boot partition in Server 2003](#)
[Extend C drive in Windows 2003 Server](#)
[Extend boot partition in Windows 2008](#)
[Extend C drive in Windows 2008 Server](#)
[Increase partition size in Windows 2003](#)
[Increase partition size in Windows 2008](#)

Partition Magic Server Resources:

[Server 2003 extend boot partition](#)
[Resize Windows 2003 partitions](#)
[Resize NTFS partition Windows 2003](#)
[Server 2003 partition resize](#)
[Server 2008 partition resize](#)
[Extend C drive in VMware Server](#)
[Repartition Windows 2003 Server](#)

[Resize RAID 1 partition](#)
[Resize RAID 5 partition](#)
[Extend RAID 5 partition](#)
[SBS Server low disk space](#)
[Change partition size 2003](#)
[Expand partition Server 2003](#)
[Shrink Extend Server 2008](#)

[Online Customer](#)

[Service](#)