

Home

Download

Buy Now

Products

Resource

Screenshots

Support & FAQ

Home --> Products --> Resource --> Extend Partition --> Extend System Partition Windows 2003 Server

### Product Editions

- Server Edition
- Unlimited Edition **Hot!**
- Free Lifetime Upgrade Edition
- Editions Comparison

### Main Features

- Partition Manager
- Disk & Partition Copy
- Extend Partition Wizard
- 1-click Allocate Free Space

### Navigation Links

- Free Download
- Purchase Online
- Top 10 Reasons to Try
- Awards & Reviews
- Customer Stories
- Screenshots
- Support & FAQ
- New Featured Clients

### Resource & Tutorial

- How to resize partitions
- How to merge partitions
- How to extend partition
- How to repartition disks
- Fix drive low disk space

### Extend Windows 2003 system partition fast and safely.

Today's hard drives feature jaw-dropping amounts of space. But no matter how big your drive, you'll be amazed at how quickly application installs, browser caches, and temporary files can eat up your free space and clutter your system.

System partition low disk space cause many problems, such as:

1. You cannot install any applications or Windows updates.
2. Windows operating system is running much slower.
3. Windows may crash if the free space is extremely low.

You'd better fix this problem as fast as possible, the earlier and the better, as no one wants to see the System crash, in that case, you have to start over and keep the Server under downtime for a long time.

### Ensure data safely when extending Windows 2003 system partition

There is no doubt that the fastest way to [solve Server 2003 low disk space problem](#) is by resizing and extending partition, but you should choose the reliable partition software, no one would like to see boot failure or data loss after resizing.

Based on the unique enhanced data protection technology and [Copy Wizard](#) built in [Partition Assistant Server](#), you don't need to worry about the data safety. Our [Server partition manager](#) is highly recommended by many professionals and editors, besides, many Fortune 500 companies select it to manage their Servers.

### How to extend Windows 2003 system partition

To extend Windows 2003 system partition, you may consider merging the system partition and a data partition directly, or resizing partitions one by one. ([how to merge Windows Server 2003 partitions](#)).

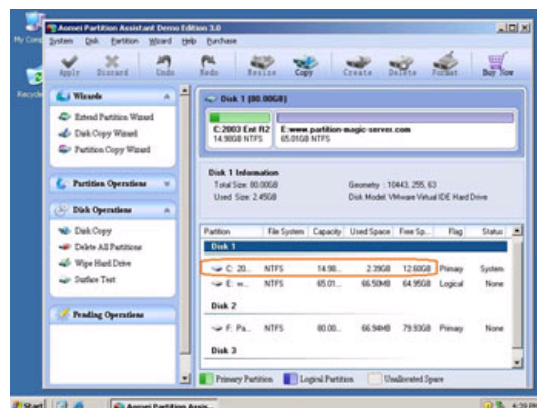
It is also extremely easy to extend system partition by resizing partition. You just need to drag and move on the disk map to shrink an existing data partition and get some Unallocated space to extend the system C drive, no need to delete, format partition or rebuild the Server.

All operations can be previewed and cancelled to avoid incorrect operations.

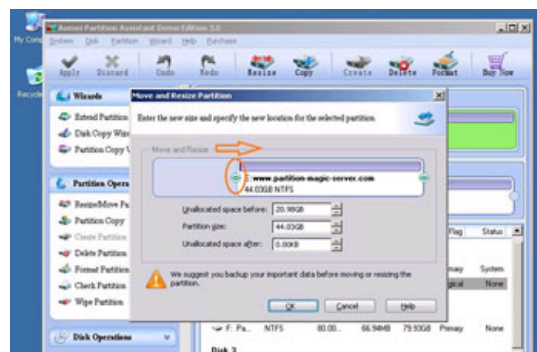
You can even extend Windows 2003 system partition without reboot if it is NTFS.

### Steps to extend Windows 2003 Server system partition

Step 1, Launch [Partition Magic Server](#), you'll see all disks and partitions that connected to your Server and free space, used space and other properties of each partition.



Right-click the data partition and select "Resize", in the pop-up window, drag the left border rightwards to shrink it.

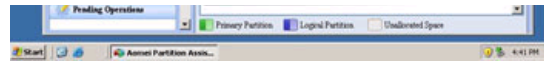


Awards

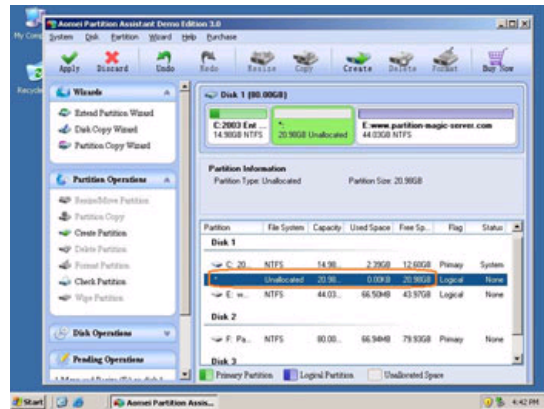


Clients Worldwide

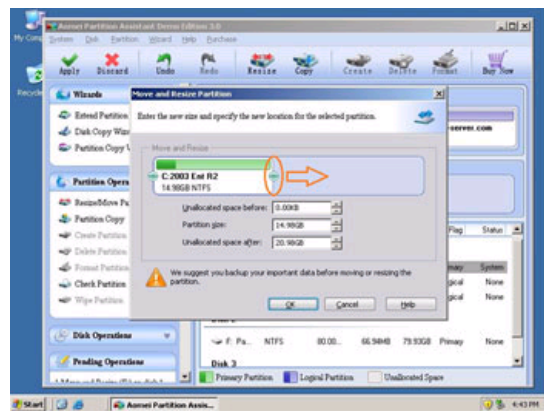




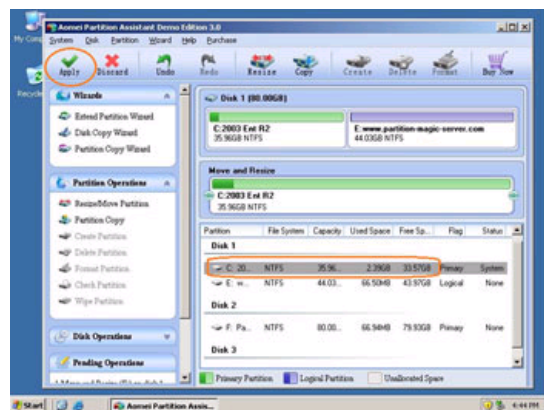
There will be some Unallocated space behind the system partition.



Step 2, Right-click the system partition and select "Resize", in the pop-up window, drag the right border rightwards to hold the Unallocated space.



Click "Apply" to proceed, done.



Now you have a "new" Server that can be used for a long time again.

[How to allocate free space from any data partition and add to C drive?](#)

### Benefits to extend Windows 2003 system partition with Partition Magic Server

- ✓ All-in-one Partition Solution - All your partition and disk maintenance requirements can be fulfilled.
- ✓ Enhanced Data Protecting - No Data Loss
- ✓ Hot Resize - Extend NTFS system partition without rebooting
- ✓ Easy to use & user-friendly interface
- ✓ Trustworthy, many Fortune 500 companies select it to maintain their Servers.
- ✓ [Read more...](#)

#### Related Articles

- ▶ [How to resize Windows 2008 Server partition?](#)
- ▶ [How to extend RAID 5 virtual partition?](#)
- ▶ [How to resize RAID 1 array virtual disk?](#)
- ▶ [How to merge Server 2003 partitions?](#)
- ▶ [Best Windows Server partition manager](#)

#### Site Links:

#### Partition Magic Server Resources:

[Home](#)

[Resource](#)

[Partition Magic Server 2003](#)

[Extend System partition Windows 2003](#)

[Server 2003 extend boot partition](#)

[Resize RAID 1 partition](#)

[Online Customer](#)

