

Home

Download

Buy Now

Products

Resource

Screenshots

Support & FAQ

Home --> Products --> Resource --> Extend Partition --> Extend SBS 2003 Server Partition

Product Editions

- Server Edition
- Unlimited Edition **Hot!**
- Free Lifetime Upgrade Edition
- Editions Comparison

Main Features

- Partition Manager
- Disk & Partition Copy
- Extend Partition Wizard
- 1-click Allocate Free Space

Navigation Links

- Free Download
- Purchase Online
- Top 10 Reasons to Try
- Awards & Reviews
- Customer Stories
- Screenshots
- Support & FAQ
- New Featured Clients

Resource & Tutorial

- How to resize partitions
- How to merge partitions
- How to extend partition
- How to repartition disks
- Fix drive low disk space

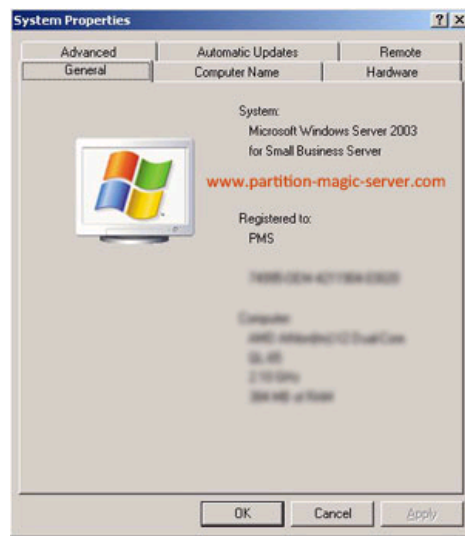
Awards



Clients Worldwide



How to extend SBS 2003 Server partition without data loss, fast and easily?



Today's hard drives feature jaw-dropping amounts of space, but no matter how big your drive, you'll be amazed at how quickly application/Windows update, browser caches, restore points and temporary files can eat up your free space.

When there is little free space in system C drive, Windows pops up Low Disk Space alert.



You'd better fix this low disk space problem as fast as possible, as you cannot install Windows updates and other applications, system runs much slower,

the worst is system crash if extremely low free space is left.

Extend SBS 2003 Server partition

By extending SBS 2003 Server partitions, you can solve this low disk space problem fast and easily. You just need to shrink an existing data partition to get some free (Unallocated) space at the end of system partition, and then extend the system C drive. No need to delete, reformat partition or rebuild the Server.

With user-friendly interface, all operations are easy to do, no professional assistant required, you just need to drag and move on the disk map to shrink and extend partitions.

Ensure data security when extending SBS 2003 Server partition

The security and stability are undoubtedly the most significant aspects for Server computers since a Server computer usually stores the most important classified and daily-used files. However, even a slight error on server computer might directly leads to boot failure or data loss.

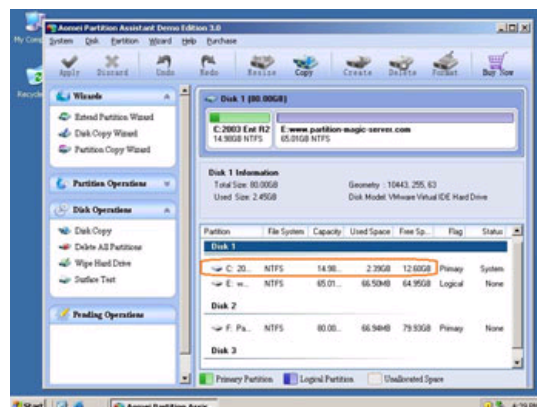
[Partition Assistant Server](#) is not only reliable itself with built-in Enhanced Data Protection but also integrated with the [Disk & Partition Copy Wizard](#) to ensure 100% data security. Many Fortune 500 companies, Governments and Universities select it to maintain there Servers.

How to extend SBS 2003 Server partition without deleting or formatting?

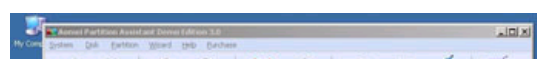
- Any operations you do on the Server will be listed in the "Operations Pending" column for you to preview.

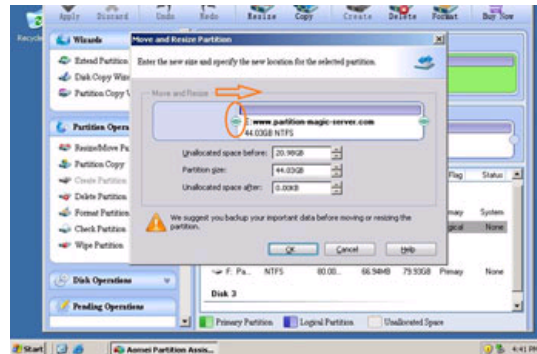
- If your SBS 2003 Server system partition is NTFS, you can extend it under Windows without rebooting.

Step 1, Launch [Partition Magic Server](#), you'll see all disks and partitions that connected to your Server and free space, used space and other properties of each partition.

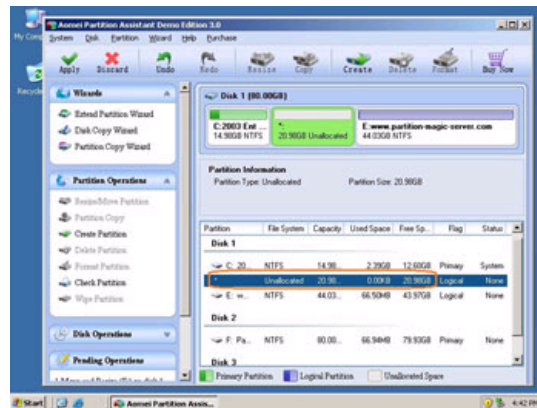


Right-click the data partition and select "Resize", in the pop-up window, drag the left border rightwards to shrink it.

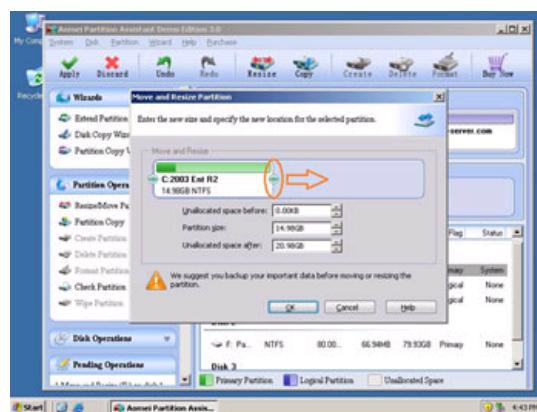




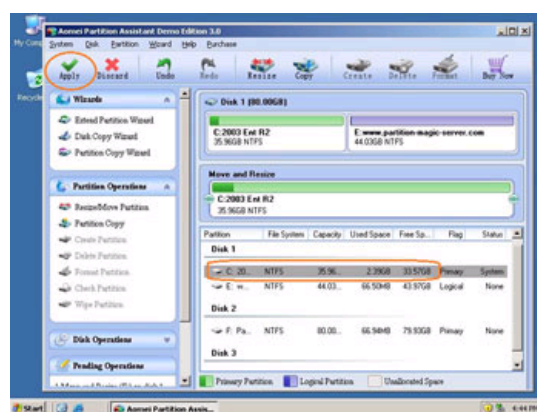
There will be some Unallocated space behind the system partition.



Step 2, Right-click the system partition and select "Resize", in the pop-up window, drag the right border rightwards to hold the Unallocated space.



Click "Apply" to proceed, done.



Now you have a "new" Server that can be used for a long time again.

[How to allocate free space from any data partition and add to C drive?](#)

For enterprise users, [Unlimited Edition](#) allows unlimited usage within your company to save time and money.

Related Articles

- [How to extend C drive in Windows 2003 Server?](#)
- [Partition Magic for SBS 2003 Server](#)
- [How to resize SBS 2003 system partition?](#)
- [How to resize SBS 2003 partition without data loss?](#)
- [How to resize RAID 1 partition?](#)
- [How to extend RAID 5 partitions?](#)

Site Links:		Partition Magic Server Resources:				
Home	Resource	Partition Magic Server 2003	Extend System partition Windows 2003	Server 2003 extend boot partition	Resize RAID 1 partition	Online Customer
Products	Screenshot	Partition Magic Server 2008	Extend boot partition in Server 2003	Resize Windows 2003 partitions	Resize RAID 5 partition	
Download	Support	Partition Magic Windows 2003	Extend C drive in Windows 2003 Server	Resize NTFS partition Windows 2003	Extend RAID 5 partition	Service
Buy Now	Sitemap	Partition Magic Windows 2008	Extend boot partition in Windows 2008	Server 2003 partition resize	SBS Server low disk space	
		Partition Magic Windows 2000	Extend C drive in Windows 2008 Server	Server 2008 partition resize	Change partition size 2003	
		Partition Manager Server	Increase partition size in Windows 2003	Extend C drive in VMware Server	Expand partition Server 2003	
		Partition Manager Server 2003	Increase partition size in Windows 2008	Repartition Windows 2003 Server	Shrink Extend Server 2008	

Copyright © 2008-2011 Partition Magic Server ALL RIGHTS RESERVED.
Partition Magic ® is a registered trademark of Symantec Corporation.