

Home

Download

Buy Now

Products

Resource

Screenshots

Support & FAQ

Home --> Products --> Resource --> Extend Partition --> Extend C Drive Windows 2003 Server

Product Editions

- Server Edition
- Unlimited Edition **Hot!**
- Free Lifetime Upgrade Edition
- Editions Comparison

Main Features

- Partition Manager
- Disk & Partition Copy
- Extend Partition Wizard
- 1-click Allocate Free Space

Navigation Links

- Free Download
- Purchase Online
- Top 10 Reasons to Try
- Awards & Reviews
- Customer Stories
- Screenshots
- Support & FAQ
- New Featured Clients

Resource & Tutorial

- How to resize partitions
- How to merge partitions
- How to extend partition
- How to repartition disks
- Fix drive low disk space

How to extend C drive in Windows 2003 Server fast and safely?

Today's hard drives feature jaw-dropping amounts of space, but no matter how big your drive, you'll be amazed at how quickly application/Windows update installs, browser caches, and temporary files can eat up your free space and clutter your system.

After running Windows 2003 Server for a period, the system C drive runs out of space. If there is no free space on the system partition, Operating System runs much slower immediately and you cannot install any updates or other applications. The worst, system may crash if extremely low free space remains.

The easy and fast way to solve this problem permanently is extending the system C drive, but all partitions have been allocated when building the Server, is it possible to extend Server 2003 C drive without losing data? Yes, in this article I'll introduce how to shrink other data partition and extend Server 2003 C drive without deleting or reformatting partition.

How to extend C drive in Windows 2003 Server?

Different with Windows 2008 Server, there is no shrink and extend feature under Server 2003 Disk Management. In fact, you cannot extend C drive by shrinking other data partition under Server 2008, I don't know why Microsoft add a semi-finished tool.

So to extend C drive in Windows 2003 Server, you need third party partition software, such as Partition Wizard Server.

In technical forums, many professionals recommend [Partition Assistant Server](#). Based on the enhanced data protection technology, [Copy Wizard](#) built in Partition Wizard Server Edition, you don't need to worry about data security. Besides, It is able to extend NTFS C drive without rebooting.

It is not only a partition resizing utility, but also an all-in-one partition solution to better maintain your Server and improve its performance.

How to extend Server 2003 C drive with Partition Assistant Server?

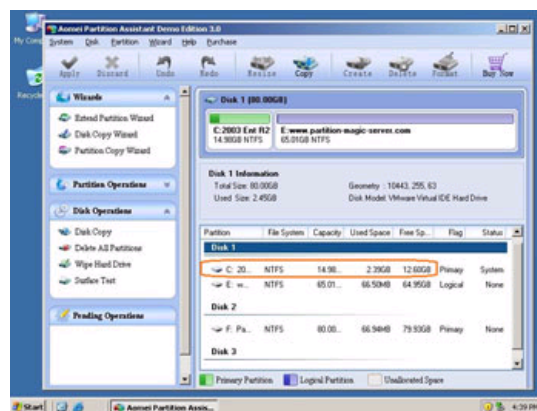
Two choices:

1. You may consider merging the system partition and a data partition directly. ([How to merge Server 2003 partitions](#))
2. Shrink a data partition and extend the system C drive.

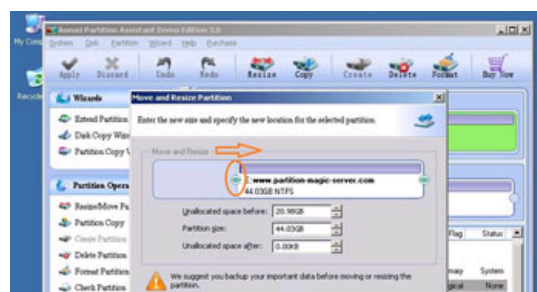
You just need to drag and move on the disk map to shrink an existing data partition to get some Unallocated space and then extend the system C drive, no need to delete, format partition or rebuild the Server.

Steps to extend Windows 2003 C drive without deleting or formatting:

Step 1, Launch [Partition Magic Server](#), you'll see all disks and partitions that connected to your Server and free space, used space and other properties of each partition.



Right-click the data partition and select "Resize", in the pop-up window, drag the left border rightwards to shrink it.

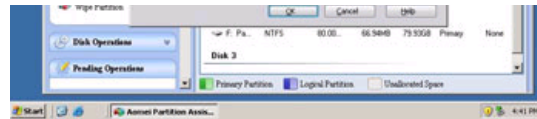


Awards

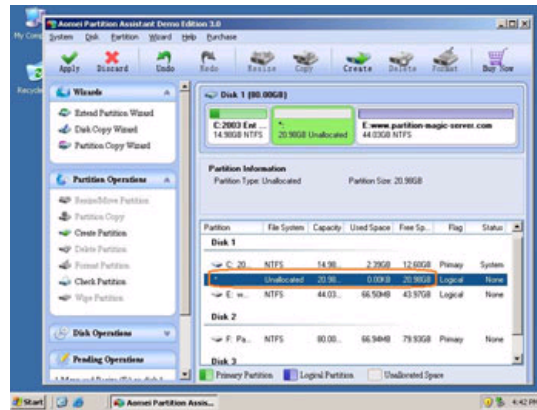


Clients Worldwide

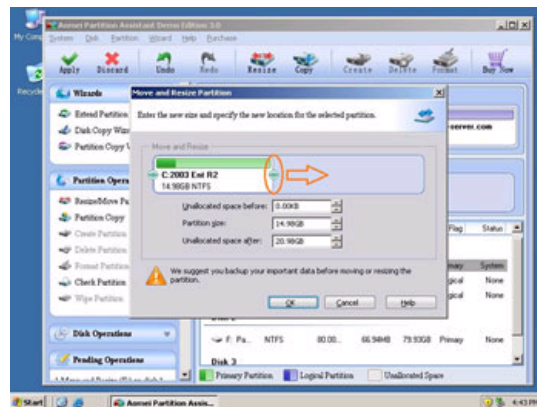




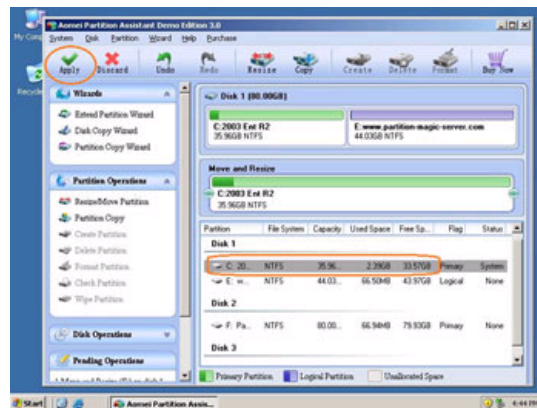
There will be some Unallocated space behind the system partition.



Step 2, Right-click the system partition and select "Resize", in the pop-up window, drag the right border rightwards to hold the Unallocated space.




Click "Apply" to proceed, done.



Now you have a "new" Server that can be used for a long time again.

[How to allocate free space from any data partition and add to C drive?](#)

 For enterprise users, [Unlimited Edition](#) allows unlimited usage within your company to save time and money.

Benefits to extend Windows 2003 C drive with Partition Assistant Server

- ✔ Your data safety is guaranteed by the Enhanced data protection.
- ✔ Hot Resize helps you extend NTFS C drive without rebooting.
- ✔ Easy to use, just drag and move on the disk map to repartition.
- ✔ Virtual pre-execution, preview any operation tasks before apply to the disk.
- ✔ Hard Disk/VHD/VMware virtual disk/RAID virtual disk all supported.

View [full features](#) or [download trial](#) to see how easy it is to extend C drive on Windows 2003 Server.

Related Articles

- ▶ [Partition Magic Windows 2003 Server](#)
- ▶ [How to resize partition on Windows 2003 Server?](#)
- ▶ [How to extend partition for Server 2003?](#)
- ▶ [How to change Server 2003 partition size?](#)
- ▶ [How to increase Windows 2003 partition size?](#)

Site Links:

[Home](#)
[Products](#)
[Download](#)
[Buy Now](#)
[Resource](#)
[Screenshot](#)
[Support](#)
[Sitemap](#)

Partition Magic Server Resources:

[Partition Magic Server 2003](#)
[Partition Magic Server 2008](#)
[Partition Magic Windows 2003](#)
[Partition Magic Windows 2008](#)
[Partition Magic Windows 2000](#)
[Partition Manager Server](#)
[Partition Manager Server 2003](#)

[Extend System partition Windows 2003](#)
[Extend boot partition in Server 2003](#)
[Extend C drive in Windows 2003 Server](#)
[Extend boot partition in Windows 2008](#)
[Extend C drive in Windows 2008 Server](#)
[Increase partition size in Windows 2003](#)
[Increase partition size in Windows 2008](#)

[Server 2003 extend boot partition](#)
[Resize Windows 2003 partitions](#)
[Resize NTFS partition Windows 2003](#)
[Server 2003 partition resize](#)
[Server 2008 partition resize](#)
[Extend C drive in VMware Server](#)
[Repartition Windows 2003 Server](#)

[Resize RAID 1 partition](#)
[Resize RAID 5 partition](#)
[Extend RAID 5 partition](#)
[SBS Server low disk space](#)
[Change partition size 2003](#)
[Expand partition Server 2003](#)
[Shrink Extend Server 2008](#)

[Online Customer](#)

[Service](#)