

Home

Download

Buy Now

Products

Resource

Screenshots

Support & FAQ

Home --> Products --> Resource --> Extend Partition --> Extend Boot Partition Windows 2003

### Product Editions

- Server Edition
- Unlimited Edition **Hot!**
- Free Lifetime Upgrade Edition
- Editions Comparison

### Main Features

- Partition Manager
- Disk & Partition Copy
- Extend Partition Wizard
- 1-click Allocate Free Space

### Navigation Links

- Free Download
- Purchase Online
- Top 10 Reasons to Try
- Awards & Reviews
- Customer Stories
- Screenshots
- Support & FAQ
- New Featured Clients

### Resource & Tutorial

- How to resize partitions
- How to merge partitions
- How to extend partition
- How to repartition disks
- Fix drive low disk space

## How to extend Windows 2003 boot partition without data loss, fast and easily?

### The definition of boot partition and system partition

The **boot partition** is the disk partition that contains the Windows operating system files and its support files, but not all files are responsible for booting.

The **system partition** is a disk partition that contains the boot sector and files such as NTLDR that are needed for booting Windows XP and earlier. (Windows Vista, Windows Server 2008 and Windows 7 use a newer boot loader called bootmgr that replaces NTLDR and is configured by using BCDEdit.exe).

The system partition can be different from the boot partition, although they are often on the same partition (drive C:). Windows setup places the initial system partition based on motherboard BIOS settings.

### Extend Windows 2003 boot partition

All the size of Windows 2003 partitions are carefully allocated while building the Server. However, things are changing and the scheduled size may not always meet your needs, especially for the System boot partition, you'll be amazed at how quickly application/Windows update installs, browser caches, and temporary files can eat up your free space and clutter your system.

If there is few space on the system partition, Operating System runs much slower immediately and you cannot install any updates or other applications. The worst, system may crash if extremely low free space remains.

You'd better extend Windows 2003 boot partition as fast as possible. The earlier and the better, as no one wants to see the System crash, in that case, you have to start over and keep the Server under downtime for a long time.

Nowadays, you can extend Windows 2003 boot partition without deleting or formatting, fast and easily.

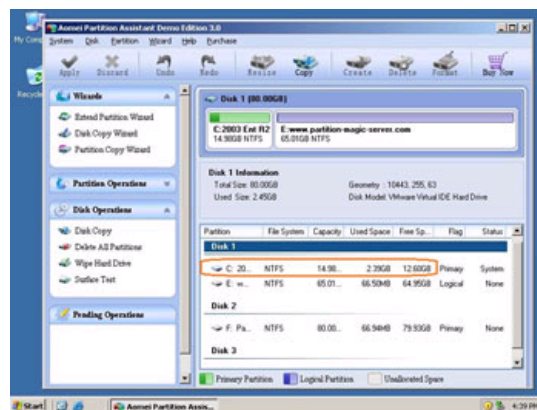
### Ensure data safety when extending Windows 2003 boot partition

There is no doubt that the fastest way to [solve Server 2003 low disk space problem](#) is by resizing and extending the boot partition, but you should choose the reliable partition software, no one would like to see boot failure or data loss after resizing.

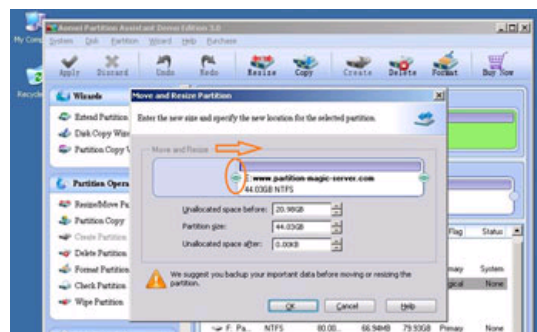
Based on the unique enhanced data protection technology and [Copy Wizard](#) built in [Partition Assistant Server](#), you don't need to worry about the data safety. Our [Server partition manager](#) is highly recommended by many professionals and editors, besides, many Fortune 500 companies select it to manage their Servers.

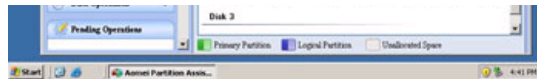
### How to extend Windows 2003 boot partition fast and easily?

Step 1, Launch [Partition Magic Server](#), you'll see all disks and partitions that connected to your Server and free space, used space and other properties of each partition.

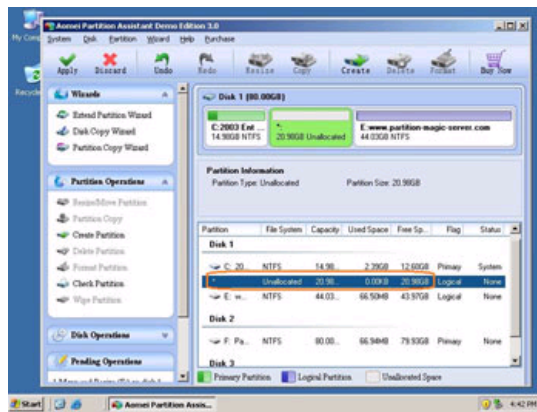


Right-click the data partition and select "Resize", in the pop-up window, drag the left border rightwards to shrink it.

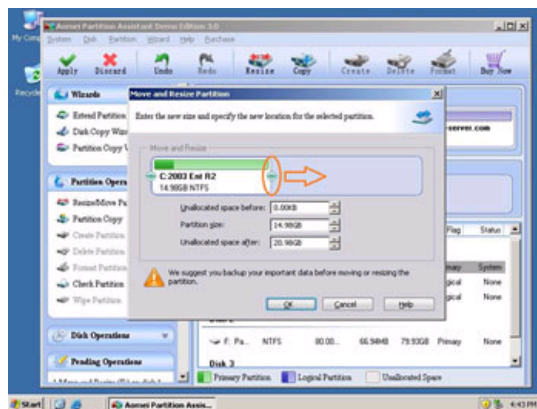




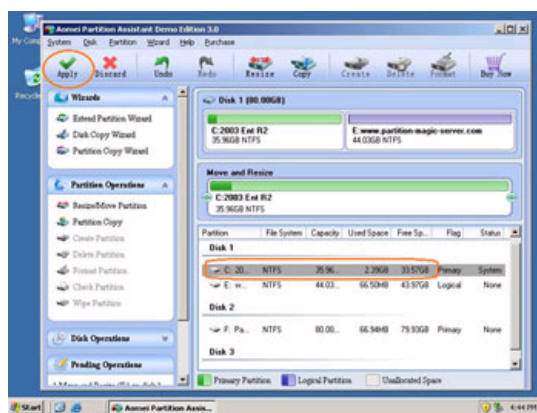
There will be some Unallocated space behind the system partition.



Step 2, Right-click the system partition and select "Resize", in the pop-up window, drag the right border rightwards to hold the Unallocated space.



Click "Apply" to proceed, done.



Now you have a "new" Server that can be used for a long time again.

How to allocate free space from any data partition and add to C drive?

For enterprise users, [Unlimited Edition](#) allows unlimited usage within your company to save time and money.

[Full Features](#) || [Download Trial](#) || [Buy it Now](#)

## Related Articles

- ▶ [How to extend Server 2003 system partition?](#)
- ▶ [How to repartition Windows 2003 Server?](#)
- ▶ [How to resize RAID 1 partition?](#)
- ▶ [How to resize RAID 5 partition?](#)
- ▶ [Partition Magic for Windows 2003 Server.](#)

## Partition Magic Server Resources:

### Site Links:

[Home](#)  
[Products](#)  
[Download](#)  
[Buy Now](#)  
[Resource](#)  
[Screenshot](#)  
[Support](#)  
[Sitemap](#)

[Partition Magic Server 2003](#)  
[Partition Magic Server 2008](#)  
[Partition Magic Windows 2003](#)  
[Partition Magic Windows 2008](#)  
[Partition Manager Server](#)  
[Partition Manager Server 2003](#)

[Extend System partition Windows 2003](#)  
[Extend boot partition in Server 2003](#)  
[Extend C drive in Windows 2003 Server](#)  
[Extend boot partition in Windows 2008](#)  
[Extend C drive in Windows 2008 Server](#)  
[Increase partition size in Windows 2003](#)  
[Increase partition size in Windows 2008](#)

[Server 2003 extend boot partition](#)  
[Resize Windows 2003 partitions](#)  
[Resize NTFS partition Windows 2003](#)  
[Server 2003 partition resize](#)  
[Server 2008 partition resize](#)  
[Extend C drive in VMware Server](#)  
[Repartition Windows 2003 Server](#)

[Resize RAID 1 partition](#)  
[Resize RAID 5 partition](#)  
[Extend RAID 5 partition](#)  
[SBS Server low disk space](#)  
[Change partition size 2003](#)  
[Expand partition Server 2003](#)  
[Shrink Extend Server 2008](#)

[Online Customer](#)

[Service](#)

